



FALL 2016

NEW PARTS GUIDE



*Expert Solutions for
Professional Technicians™*



► Air Suspension Compressor

Tech Expert's Air Suspension Compressors are part of the suspension control responsible for air control of the ride height system. When burnt out, a vehicle cannot adjust its ride height level.



APR103
Accelerator Pedal Position
Sensor Repair Kit
GM Trucks 2000-94
Chevy Trucks 2000-94

5.2 MILLION
VIO



ASC102
Air Suspension Compressor
Ford Expedition 2006-02
Lincoln Navigator 2006-02
VIO over 700,000

NEW PRODUCT CATEGORY

*High-quality direct replacement
for a burnt out compressor that
restores leveling function
to suspension*



ASC103
Air Suspension Compressor
Ford Crown Victoria 2011-03
Lincoln Town Car 2011-03
Mercury Grand Marquis 2011-03
VIO over 800,000

NEW PRODUCT CATEGORY

*High-quality direct replacement
for a burnt out compressor that
restores leveling function
to suspension*



ASP101
Air Suspension Spring Solenoid
Ford Expedition 2002-97
Lincoln Continental 2002-95
Lincoln Navigator 2002-98
VIO over 600,000

PROBLEM SOLVER

*High-quality, direct
replacement to restore
proper ride height*



ASP102
Air Suspension Spring Solenoid
Ford Expedition 2006-03
Lincoln Navigator 2006-03
VIO over 650,000

PROBLEM SOLVER

*High-quality, direct
replacement to restore
proper ride height*



ASP104
Air Suspension Spring Solenoid
Ford Crown Victoria 2011-92
Lincoln Town Car 2007-91
Mercury Grand Marquis 2011-92

1.8 MILLION
VIO



ASP105
Air Suspension Spring Solenoid
Ford Expedition 2015-07
Lincoln Navigator 2015-07
VIO over 530,000

PROBLEM SOLVER

*High-quality, direct
replacement to restore
proper ride height*



ETB748
Electronic Throttle Body
Nissan Trucks and Vans 2015-05

100% NEW NOT REMAN

1.2 MILLION
VIO



ETB751
Electronic Throttle Body
Infiniti QX56 2010-04
Nissan Armada & Titan 2015-04
VIO over 600,000

100% NEW NOT REMAN

*Tech Expert Electronic Throttle
Bodies are always new,
never remanufactured*



ETB753
Electronic Throttle Body
Nissan Altima 2015-14
Nissan Rogue 2015-14
VIO over 900,000

100% NEW NOT REMAN

*Tech Expert Electronic Throttle
Bodies are always new,
never remanufactured*



ETB166
Electronic Throttle Body
Ford Escape 2008-05
Mercury Mariner 2008-05
VIO over 200,000

100% NEW NOT REMAN

*Tech Expert Electronic Throttle
Bodies are always new,
never remanufactured*



ETB169
Electronic Throttle Body
Ford Cars & SUV 2016-13
Lincoln Car & Midsize 2016-13

100% NEW NOT REMAN

1.2 MILLION
VIO



ETB173
Electronic Throttle Body
Dodge Trucks 2005-03
VIO over 500,000

100% NEW NOT REMAN

*Tech Expert Electronic Throttle
Bodies are always new,
never remanufactured*



HLS576
Headlight Level Sensor
Mazda 3 & 6 2015-14
Mazda CX-5 2015-13
VIO over 530,000

PROVEN QUALITY

*Comes complete with new
sensor, bracket and linkage*

► Transfer Case Gear Repair Kit

Tech Expert's Transfer Case Gear Repair Kit provides a re-engineered alternative to the plastic OE gear, including an upgraded metal gear that better protects against wear and breakage. The plastic OE gear is a common failure for certain BMW applications between 80,000 and 120,000 miles.



HLS581
Headlight Level Sensor
Acura MDX 2013-07
Acura ZDX 2012-10
VIO over 250,000

PROVEN QUALITY

Comes complete with new sensor, bracket and linkage



HWH110
Headlight Wiring Harness
For H13 Bulbs
VIO over 19.3 Million

PROBLEM SOLVER

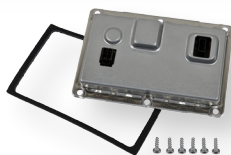
High-temp design prevents connector from melting when using high intensity aftermarket bulbs



HWH109
Headlight Wiring Harness
For H9 Bulbs
VIO over 9.4 Million

PROBLEM SOLVER

High-temp design prevents connector from melting when using high intensity aftermarket bulbs



HID749
HID Headlight Ballast
Audi/VW Cars 2005-03
Cadillac Cars 2009-03
Chrysler Cars 2008-06

1.1 MILLION VIO



HID751
HID Headlight Ballast
Audi/VW Cars 2011-07
VIO over 140,000

EXPERT SOLUTION

High-quality, direct replacement for burned-out Xenon Ballasts



SSB501
Honda Shift Button Cover
Honda Accord 2005-03
VIO over 970,000

PROBLEM SOLVER

Designed with upgraded plastic to prevent future cracking or chipping issues that the OE face



SSB500
Honda Shifter Repair Kit
Honda Accord 2005-03
VIO over 970,000

PROBLEM SOLVER

Designed with upgraded plastic to prevent future cracking or chipping issues that the OE face



ADA223
HVAC Air Door Actuator
GM Vans 2015-03
Chevy Vans 2015-03

1.1 MILLION
VIO



ADA224
HVAC Air Door Actuator
Chevy 2004-01
Buick 2007-02
Pontiac 2005-01
VIO over 870,000

EXPERT SOLUTION

*Fit, form, function is an
exact-match to
OE design*



ADA226
HVAC Air Door Actuator
Buick LeSabre 2005-00
Pontiac Bonneville 2005-00
VIO over 800,000

EXPERT SOLUTION

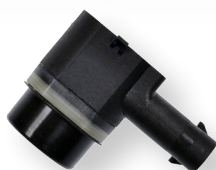
*Fit, form, function is an
exact-match to
OE design*



ADA225
HVAC Air Door Actuator
Jeep Cherokee 2001-98
Jeep TJ 2006-01
Jeep Wrangler 2006-01
VIO over 720,000

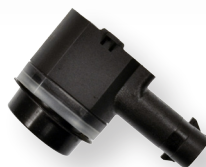
EXPERT SOLUTION

*Fit, form, function is an
exact-match to
OE design*



PAS123
Park Assist Sensor
Ford C-Max 2015-13
Ford Focus 2015-12

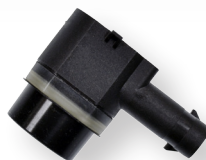
1.0 MILLION
VIO



PAS118
Park Assist Sensor
Ford Escape 2015-13
VIO over 900,000

PROVEN QUALITY

*High-quality, direct
replacement for
damaged sensors*



PAS122
Park Assist Sensor
Ford Escape 2015-13
VIO over 900,000

PROVEN QUALITY

*High-quality, direct
replacement for
damaged sensors*

► Windshield Wiper Motor

Tech Expert's Windshield Wiper Motors are designed to replace failed OE units, reduce noise and return function to the windshield wiper system.



TCG700
Transfer Case Gear Repair Kit
BMW X3 2010-04
BMW X5 2006-01
VIO over 250,000

NEW PRODUCT CATEGORY

*Upgraded metal design
fixes OE issue of
plastic breaking*



VIA101
Variable Intake Manifold Actuator
Ford Mustang 2010-05
VIO over 570,000

EXPERT SOLUTION

*High-quality, direct
replacement for failed
OE part*



VSF505
VT Spool Valve Filter
Honda Civic 2005-96
Honda Civic del Sol 1997-96

2.0 MILLION
VIO



VSF506
VT Spool Valve Filter
Honda Accord 2007-05
Honda Odyssey 2007-05
Honda Pilot 2008-06
VIO over 860,000

PROBLEM SOLVER

*Replace the clogged screen
filter with OE-quality
direct-fit replacement*



WWL541
Windshield Wiper Linkage
Kia Sedona 2005-02
VIO over 200,000

EXPERT SOLUTION

*Replace failed OE unit
and restore visibility in
bad weather*



WWM500
Windshield Wiper Motor
Hyundai Sonata 2010-06
VIO over 580,000

PROBLEM SOLVER

*Designed and assembled
with proper lubricant
coating to eliminate noise*



WWM501
Windshield Wiper Motor
Hyundai Santa Fe 2004-01
VIO over 290,000

PROBLEM SOLVER

*Designed and assembled
with proper lubricant
coating to eliminate noise*

Alternator Decoupler Pulley Components

Overrunning Alternator Pulleys

The Problem: Replacing certain overrunning alternator pulleys requires replacing the entire alternator assembly.

Tech Expert's Response: Saving you time and money on a full repair, Tech Expert's Overrunning Alternator Pulley (OAP) allows you to replace the damaged part without replacing the entire assembly. Once installed, Tech Expert's OAP will reduce stress on the belt drive system, leading to improved performance and a smoother, quieter ride.

- Allows you to replace only failed part instead of entire alternator
- Manufactured out of high-grade metal to withstand harsh conditions



OAP100

Ford Escape (2007-05)
Mazda Tribute (2006-05)
Mercury Mariner (2007-05)

VIO over 107,000

Alternator Decoupler Pulley Tool Kit

With Tech Expert's Alternator Decoupler Pulley Tool Kit, you'll have all the tools needed to service the alternator decoupler pulley in one easy-to-find place. With a complete range of 23 different Torx, spline, and hex adaptors that fit most alternators, Tech Expert's Alternator Decoupler Pulley Tool Kit is the most complete kit in the market today.

OAP103

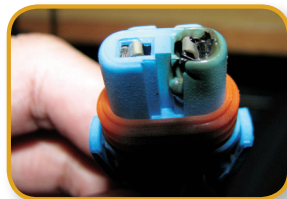
Fits most domestic & import applications



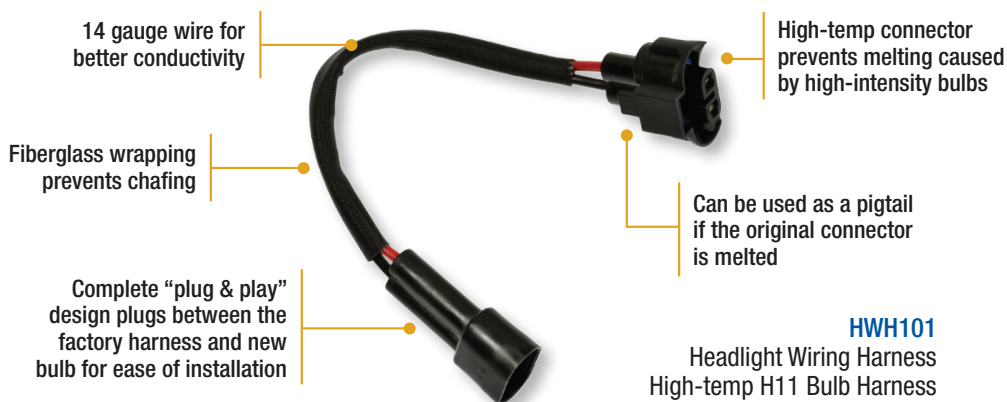
TECH EXPERT™ Headlight Wiring Harnesses

The Problem: The heat generated by modern OE automotive light bulbs can melt the bulb's connectors.

Tech Expert's Response: To prevent melting, Tech Expert's Headlight Wiring Harnesses have high-temp connectors that can withstand extreme heat. The harnesses also have 14-gauge wire for better conductivity and a "plug & play" feature that lets you plug the harness right between the factory harness and new bulb. You can even use the harness as a pigtail if the original connector is melted. Tech Expert's line of headlight harnesses covers the following high-temp bulbs: H1, H3, H4, H7, H9, H11, H13, 9004, 9005, 9006, 9006XS, and 9007.



Melted Original-style Unit



HWH101
Headlight Wiring Harness
High-temp H11 Bulb Harness

Part #	HWH100	HWH101	HWH102	HWH103	HWH104	HWH105	HWH106	HWH107	HWH109	HWH110
Bulb #	H7	H11	H7	9005	9006	9004 & 9007	9003 & H4	H1 & H3	H9	H13

Look for our exciting KIT1 High-Temperature Headlight Harness Assortment coming soon!



TECH EXPERT™ by NAPA® Echlin®

37-18 Northern Boulevard, Long Island City, NY 11101

©2016 TECH EXPERT™

Expert Solutions for Professional Technicians™



TE11310