

2016



TECHNICIAN BENCH GUIDE



*Expert Solutions for
Professional Technicians™*



Table of Contents

4WD Vacuum Actuator	4	Governor Pressure Sensor	22	Transmission Oil Temp Sensors	54	Turbocharger Speed Sensor	55
ABS Sensor Harness Repair Kits	4	Governor Pressure Sensor & Solenoid Kit	22	Transmission Pressure Switch Assemblies	54	Variable Intake Manifold Actuators	55
Accelerator Pedal Position Sensors	4	Headlight Level Motors	22	Trunk Hatch Handle Repair Kit	54	Variable Intake Manifold Actuator Repair Kit	56
Alternator Decoupler Pulley Tool Kit	4	Headlight Level Sensors	23	Trunk Latch Actuator Repair Kit	54	Variable Valve Timing (VVT) Spool Valve Filter	56
Automatic Headlight Sensors	5	Headlight Modules	25	Turbocharger Oil Drain Tube	55	Vertical Fuel Conditioning Module	56
Automatic Transmission Oil Cooler Thermostats	5	Headlight Wiring Harnesses	25	Turbocharger Actuator	55	Windshield Wiper Linkage	56
Battery Current Sensor	6	HEI Harness Repair Kit	26	Turbocharger Bypass Valve	55		
Brake Master Cylinder Reservoir Service Kit	6	HID Headlight Ballasts	26	Turbocharger Solenoid	55		
Cam Gear Wedge Tool	6	Horizontal Fuel Conditioning Module	28				
Cam Synchronizer Install Tools	6	HVAC Air Door Actuators	28				
Diesel Injector Sleeve	6	Hybrid Drive Coolant Pump	37				
Diesel Injector Tube	6	Ignition Coil Harness Repair Kit	38				
Diesel Valve Cover Gasket Kits	7	Ignition Coil Maintenance Kit	38				
DISA Valve Repair Kits	7	Keyless Entry Transmitters	38				
Driveshaft Center Support Bearing	7	Knock Sensor Wiring Harness	44				
Eccentric Shaft Sensor	7	Memory Seat Position Sensor	44				
EGR Pressure Feedback Hose Kit	8	Overrunning Alternator Pulleys	44				
EGR Repair Kit	8	Park Assist Sensors	46				
EGR Tool Kit	8	PMD Relocation Kits	47				
EGR Transducers	8	PMD Resistor #5	48				
EGR Tube Connectors	10	PMD Resistor #9	48				
Electronic Diverter Valve	10	Power Distribution Centers	48				
Electronic Throttle Bodies	10	Rain Sensors	48				
Engine Coolant Air Bleeder Valve	18	Ride Height Sensors	49				
Expansion Tank Service Kits	18	Shift Interlock Actuator	50				
Fuel Filter Primer Housing Seal Kit	19	Shift Interlock Levers	50				
Fuel Injection Control Module (FICM)	19	Speed Sensor Harness Repair Kit	50				
Fuel Level Sensors	19	Steering Column Shift Tubes	50				
Fuel Pressure Regulator Upgrade Kit	21	Steering Column Shift Tube Bushing	51				
Fuel Pressure Warning Light Kit	21	Tail Light Circuit Boards	51				
Fuel Pump Cam Follower	21	Thermostat Housing Assemblies	52				
Gear Repair Kit - Power Seat	22	Third Brake Light	53				
Gear Repair Kit - Speedometer	21	Third Brake Light Gasket	53				
Gear Repair Kit - Steering Column	21	Throttle Position Sensor Repair Kits	53				

Expert Solutions for Professional Technicians™

This year's TECH EXPERT™ Bench Guide features more than 350 parts, including new technologies, new part categories, and problem-solving improvements to OE parts. Each part listed in the following pages was designed with the professional automotive technician in mind and tested to exceed our strict quality standards. That's what makes TECH EXPERT™ by NAPA® Echlin® the aftermarket's premier engine management brand. It brings NAPA® Echlin's innovation, engineering expertise, superior product quality, unmatched customer service, competitive pricing, and brand integrity to every part placed in a TECH EXPERT box.



▶ Alternator Decoupler Pulley Tool Kit

The alternator decoupler pulley is becoming an increasingly common part on both domestic and import applications. Now, technicians no longer have to waste valuable time in the bay looking for hard-to-find tools to service this part thanks to TECH EXPERT's Alternator Decoupler Pulley Tool Kit. Including a complete range of torx, spline and hex adaptors that will fit most alternators, TECH EXPERT's Alternator Decoupler Pulley Tool Kit is the most complete kit in the market today.

See below for product applications.



FWA100
4WD Vacuum Actuator
Ford/Lincoln Trucks 2010-03
VIO over 3.3 million

EXPERT SOLUTION

Direct replacement for damaged OE unit that restores 4WD function



ABR100
ABS Sensor Harness
Repair Kit
GM 2009-00

7.7 MILLION VIO



ABR101
ABS Sensor Harness
Repair Kit
GM 2005-00
VIO over 3.1 million

PROBLEM SOLVER

Repair the harness without replacing the entire sensor



APR100
Accelerator Pedal Position Sensor
Ford Trucks 2001-96
VIO over 820,000

PROBLEM SOLVER

No need to replace the entire pedal assembly when just the sensor fails



APR101
Accelerator Pedal Position Sensor
GM Trucks 2005-00

2.3 MILLION VIO



APR102
Accelerator Pedal Position Sensor
GM Trucks 2006-04

2.4 MILLION VIO

NEW



OAP103
Alternator Decoupler Pulley Tool Kit
Universal

With a complete range of 23 different Torx, spline, and hex adaptors that fit most alternators, TechSmart's kit is the most complete kit in the market today.



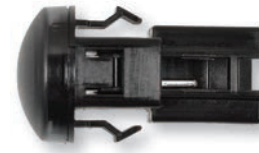
AHS100
Automatic Headlight Sensor
GM 2007-01

2.6 MILLION VIO



AHS502
Automatic Headlight Sensor
Lexus 2011-02
Toyota 2011-03

5.1 MILLION VIO



AHS504
Automatic Headlight Sensor
Lexus 2005-98
Toyota 2011-01

8.1 MILLION VIO



ALS101
Automatic Headlight Sensor
Lexus 2010-01
Toyota 2010-01

3.0 MILLION VIO



OCT700
Automatic Transmission
Oil Cooler Thermostat
BMW 2008-00
VIO over 780,000

Corrects poor transmission cooling due to a failed OE unit



THA719
Automatic Transmission
Oil Cooler Thermostat
BMW 2010-02
VIO over 300,000

EXPERT SOLUTION

Restores proper cooling performance ensuring the vehicle is fixed right, the first time.



OCT701
Automatic Transmission
Oil Cooler Thermostat
BMW X3 2010-07
VIO over 60,000

EXPERT SOLUTION

Restores proper cooling performance ensuring the vehicle is fixed right, the first time.

▶ Eccentric Shaft Sensor

The eccentric shaft position sensor is used to give feedback for the Valvetronic system in late model BMWs. It works in conjunction with variable valve timing to improve fuel economy and emissions. This sensor is prone to oil leaks from failed seals and will cause drivability issues without throwing a code or check engine light. TECH EXPERT can now help with a new line of OE-Exact Match Eccentric Shaft Position Sensors.

See pages 7-8 for product applications.



OCT702
Automatic Transmission
Oil Cooler Thermostat
BMW X5 2005-00
VIO over 43,000

EXPERT SOLUTION

Restores proper cooling performance ensuring the vehicle is fixed right, the first time.



BCS100
Battery Current Sensor
GM 2013-05

5.7 MILLION VIO



VGK100
Diesel Valve Cover Gasket Kit
Ford Trucks/Vans 2003-98
VIO over 820,000

COMPLETE KIT

Complete kit with new valve cover gasket, glow plug harness, and a new pigtail for a complete repair



VGK101
Diesel Valve Cover Gasket Kit
Ford Trucks/Vans 1997-94
VIO over 460,000 million

COMPLETE KIT

Complete kit with new valve cover gasket, glow plug harness, and a new pigtail for a complete repair



BFR100
Brake Master Cylinder
Reservoir Service Kit
Audi 1999-88
Volkswagen 1999-98
VIO over 200,000

COMPLETE KIT

High-quality, direct replacement for cracked or leaking OE brake fluid reservoirs



DSA700
DISA Valve Repair Kit
BMW 2000-97
VIO over 330,000

COMPLETE KIT

*Repair just the damaged flap portion of the DISA valve instead of replacing the entire assembly
Includes a new flap, hinge, pin, retaining clip, and an extractor screw for O-ring*



ECP101
Cam Gear Wedge Tool
Ford Trucks 2013-05
VIO over 3 million

PROBLEM SOLVER

*High-durometer polyurethane tool for cam phaser removal and installation on Ford 4.6L and 5.4L V8 engines
Use with ECP100 Cam Phaser*



DSA701
DISA Valve Repair Kit
BMW 2012-01
VIO over 670,000

COMPLETE KIT

*Repair just the damaged flap portion of the DISA valve instead of replacing the entire assembly
Includes a new flap, hinge, pin, retaining clip, and an extractor screw for O-ring*



CSY100
Cam Synchronizer
Install Tools
Ford 2004-95

6.3 MILLION VIO



DSA702
DISA Valve Repair Kit
BMW 2006-01
VIO over 450,000

COMPLETE KIT

*Repair just the damaged flap portion of the DISA valve instead of replacing the entire assembly
Includes a new flap, hinge, pin, retaining clip, and an extractor screw for O-ring*



DSV100
Diesel Injector Sleeve
Ford Trucks 2003-95
VIO over 860,000

PROBLEM SOLVER

Replaces OE sleeves damaged over time by carbon build-up



BSP700
Driveshaft Center
Support Bearing
Volkswagen Touareg 2010-04
Porsche Cayenne 2010-03
VIO over 125,000

PROBLEM SOLVER

Replace just the failed OE center support bearing instead of the expensive 2-piece driveshaft assembly



FJT100
Diesel Injector Tube
Dodge Ram 2500 2007-03
Dodge Ram 3500 2007-03
VIO over 580,000

PROVEN QUALITY

Original units can wear down causing fuel leakage and a hard start or no-start condition

NEW



ESS702
Eccentric Shaft Sensor
BMW 2012-03
VIO over 843,000

EXPERT SOLUTION

Replaces failure prone sensor with high quality direct fit sensor

► Electronic Throttle Bodies

TECH EXPERT® offers more than 140 electronic throttle bodies. Each one is new, not remanufactured, and is an OE-matching direct replacement. In total, our line covers more than 66 million VIO. Plus, with our electronic throttle bodies, you won't experience comebacks due to worn items during a partial rebuild.

See pages 10-18 for product applications.



NEW



ESS703
Eccentric Shaft Sensor
BMW 2010-04
VIO over 206,000

EXPERT SOLUTION

Replaces failure prone sensor with high quality direct fit sensor

NEW



ESS704
Eccentric Shaft Sensor
Mini Cooper 2015-07
VIO over 441,000

EXPERT SOLUTION

Replaces failure prone sensor with high quality direct fit sensor



DPH100
EGR Pressure Feedback
Hose Kit
a.k.a. DPFE Hose Kit
Ford 2008-01
VIO over 27 million

PROBLEM SOLVER

High-temp, high-strength hoses to replace worn OE hoses when replacing a DPFE sensor



EGK500
EGR Repair Kit
Honda/Acura 2008-98
VIO over 4.7 million

PROBLEM SOLVER

Install with EGK501 tool kit to renew Honda & Acura EGR ports



EGK501
EGR Tool Kit
Honda/Acura 2008-98
VIO over 4.7 million

PROBLEM SOLVER

Reusable tools unclog EGR ports and install EGK500 components



EGT100
EGR Transducer
Dodge Minivans 2000-96
Chrysler Minivans 2000-96
Plymouth Minivans 2000-96
VIO 1.3 million

Available separately from the EGR valve, replace only the failed transducer, saving time and money

Perfectly matched to the OE EGR valve specifications



EGT101
EGR Transducer
Dodge 1999-90
Chrysler 1995-90
Plymouth 1999-90

1.4 MILLION
VIO



EGT102
EGR Transducer
Dodge Minivans 2002-01
Chrysler Minivans 2002-01
VIO over 600,000

Available separately from the EGR valve, replace only the failed transducer, saving time and money

Perfectly matched to the OE EGR valve specifications



EGT103
EGR Transducer
Dodge 1996-92
Jeep 1996-93

1.1 MILLION
VIO



EGT104
EGR Transducer
Chrysler 2005-95
VIO over 300,000

Available separately from the EGR valve, replace only the failed transducer, saving time and money

Perfectly matched to the OE EGR valve specifications



EGT106
EGR Transducer
Dodge Minivans 2000-96
Chrysler Minivans 2000
Plymouth Minivans 2000-96
VIO over 300,000

Available separately from the EGR valve, replace only the failed transducer, saving time and money

Perfectly matched to the OE EGR valve specifications



EGT107
EGR Transducer
Chrysler 1997-95
Dodge 1997-95
Eagle 1997-95

Available separately from the EGR valve, replace only the failed transducer, saving time and money

Perfectly matched to the OE EGR valve specifications



EGT108
EGR Transducer
Dodge 1996-92
VIO over 300,000

Available separately from the EGR valve, replace only the failed transducer, saving time and money

Perfectly matched to the OE EGR valve specifications



EGT109
EGR Transducer
Chrysler/Dodge/Plymouth
2000-97
VIO over 245,000

Available separately from the EGR valve, replace only the failed transducer, saving time and money

Perfectly matched to the OE EGR valve specifications

► Engine Coolant Air Bleeder Valve

TECH EXPERT® exclusive design features an extra hex nut for holding the valve in place with a wrench while bleeding the coolant, preventing damage to the valve.

See page 18 for product applications.



EGC100
EGR Tube Connector
Ford Light Trucks 2010-97
VIO over 4.4 million

PROBLEM SOLVER

*OE unit is prone to rust and corrosion
TECH EXPERT's zinc coated connector
helps prevent this OE problem*



EGC101
EGR Tube Connector
Ford Trucks/Vans 1999-97
VIO over 600,000

PROBLEM SOLVER

*OE unit is prone to rust and corrosion
TECH EXPERT's zinc coated connector
helps prevent this OE problem*



EDV700
Electronic Diverter Valve
Audi/VW w/ 2.0T 2010-05
VIO over 500,000

PROBLEM SOLVER

*Upgraded piston-driven
design restores boost
pressures and drivability*



ETB101
Electronic Throttle Body
Ford Trucks 2010-04

100% NEW NOT REMAN

2.0 MILLION VIO



ETB102
Electronic Throttle Body
Ford 2010-08
Lincoln 2010-08
Mercury 2010-08
VIO over 280,000

100% NEW NOT REMAN

*TECH EXPERT™ Electronic
Throttle Bodies are always new,
never remanufactured*



ETB106
Electronic Throttle Body
GM Trucks 2009-06

100% NEW NOT REMAN

2.3 MILLION VIO



ETB107
Electronic Throttle Body
Chevrolet Aveo 2008-06
VIO over 160,000

100% NEW NOT REMAN

*TECH EXPERT™ Electronic
Throttle Bodies are always new,
never remanufactured*



ETB139
Electronic Throttle Body
Dodge 5.7L & 6.1L HEMI 2010-05
Jeep 5.7L & 6.1L HEMI 2010-05
Chrysler 5.7L & 6.1L HEMI 2010-05
VIO over 520,000

100% NEW NOT REMAN

*TECH EXPERT™ Electronic
Throttle Bodies are always new,
never remanufactured*



ETB144
Electronic Throttle Body
Ford F150 2013-11
VIO over 325,000

100% NEW NOT REMAN

*TECH EXPERT™ Electronic
Throttle Bodies are always new,
never remanufactured*



ETB145
Electronic Throttle Body
Ford/Lincoln/Mercury 2013-09

100% NEW NOT REMAN

2.0 MILLION VIO

NEW



ETB151
Electronic Throttle Body
Pontiac Vibe 2010-09
Toyota Corolla 2010-09
Toyota Matrix 2010-09
VIO over 766,000

100% NEW NOT REMAN

*TECH EXPERT™ Electronic
Throttle Bodies are always new,
never remanufactured*

NEW



ETB152
Electronic Throttle Body
Chevrolet Cruze 2014

100% NEW NOT REMAN

*TECH EXPERT™ Electronic
Throttle Bodies are always new,
never remanufactured*



ETB158
Electronic Throttle Body
GM/Toyota/Scion 2012-06

1.1 MILLION VIO



ETB159
Electronic Throttle Body
GM 2007-02
VIO over 600,000

100% NEW NOT REMAN

*TECH EXPERT™ Electronic
Throttle Bodies are always new,
never remanufactured*

► Expansion Tank Service Kits

When the OE expansion tank system fails, coolant leaks and overheating can occur. Our Expansion Tank Service Kits help restore the vehicle's cooling functions. Each kit includes everything needed for the complete professional repair.

See pages 18-19 for product applications.



NEW



ETB160
Electronic Throttle Body
Ford F-150 2010-09
VIO over 170,000

100% NEW NOT REMAN

TECH EXPERT™ Electronic Throttle Bodies are always new, never remanufactured

NEW



ETB162
Electronic Throttle Body
Ford Focus 2007-04
VIO over 550,000

100% NEW NOT REMAN

TECH EXPERT™ Electronic Throttle Bodies are always new, never remanufactured

NEW



ETB163
Electronic Throttle Body
Ford Trucks 2015-11
VIO over 518,000

100% NEW NOT REMAN

TECH EXPERT™ Electronic Throttle Bodies are always new, never remanufactured

NEW



ETB164
Electronic Throttle Body
Chrysler 2010-06
Dodge 2011-05

100% NEW NOT REMAN

1.9 MILLION VIO

NEW



ETB504
Electronic Throttle Body
Nissan Sentra 1.8L 2006-03
VIO over 350,000

100% NEW NOT REMAN

TECH EXPERT™ Electronic Throttle Bodies are always new, never remanufactured

NEW



ETB511
Electronic Throttle Body
Toyota 2005-01
VIO over 128,000

100% NEW NOT REMAN

TECH EXPERT™ Electronic Throttle Bodies are always new, never remanufactured

NEW



ETB512
Electronic Throttle Body
Lexus 2008-04
Toyota 2009-02
VIO over 1 million

100% NEW NOT REMAN

TECH EXPERT™ Electronic Throttle Bodies are always new, never remanufactured

NEW



ETB513
Electronic Throttle Body
Toyota Prius 2009-01
VIO over 660,000

100% NEW NOT REMAN

TECH EXPERT™ Electronic Throttle Bodies are always new, never remanufactured

NEW



ETB514
Electronic Throttle Body
Toyota Yaris 2013-07
VIO over 420,000

100% NEW NOT REMAN

TECH EXPERT™ Electronic Throttle Bodies are always new, never remanufactured

NEW



ETB515
Electronic Throttle Body
Toyota 2008-05

100% NEW NOT REMAN

1.1 MILLION VIO

NEW



ETB517
Electronic Throttle Body
Toyota Camry 2004-02
VIO over 724,000

100% NEW NOT REMAN

TECH EXPERT™ Electronic Throttle Bodies are always new, never remanufactured

NEW



ETB518
Electronic Throttle Body
Toyota 2006-03
VIO over 1 million

100% NEW NOT REMAN

TECH EXPERT™ Electronic Throttle Bodies are always new, never remanufactured

NEW



ETB519
Electronic Throttle Body
Lexus GS300 2006-05
Lexus IS250 2013-06
VIO over 280,000

100% NEW NOT REMAN

TECH EXPERT™ Electronic Throttle Bodies are always new, never remanufactured

NEW



ETB520
Electronic Throttle Body
Lexus 2014-10
Toyota 2012-09

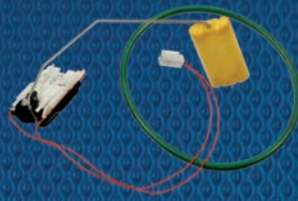
100% NEW NOT REMAN

2.0 MILLION VIO

Fuel Level Sensor

Save time and money by avoiding having to replace the entire fuel pump assembly on popular GM and Nissan makes by simply swapping out the failed fuel level sensor. Fitting over 22 million vehicles on the road, TECH EXPERT's offering of Fuel Level Sensors are guaranteed to match OE fit form and function and give you the highest quality piece in the market today.

See pages 19-21 for product applications.



NEW



ETB521
Electronic Throttle Body
Lexus 2014-07
VIO over 165,000

100% NEW NOT REMAN

TECH EXPERT™ Electronic Throttle Bodies are always new, never remanufactured

NEW



ETB522
Electronic Throttle Body
Toyota Prius 2013-10
Lexus 2013-12
VIO over 792,000

100% NEW NOT REMAN

TECH EXPERT™ Electronic Throttle Bodies are always new, never remanufactured

NEW



ETB523
Electronic Throttle Body
Scion iQ 2014-12

100% NEW NOT REMAN

TECH EXPERT™ Electronic Throttle Bodies are always new, never remanufactured

NEW



ETB524
Electronic Throttle Body
Toyota Prius C 2014-12
VIO over 115,000

100% NEW NOT REMAN

TECH EXPERT™ Electronic Throttle Bodies are always new, never remanufactured

NEW



ETB525
Electronic Throttle Body
Toyota Tacoma 2014-05
VIO over 404,000

100% NEW NOT REMAN

TECH EXPERT™ Electronic Throttle Bodies are always new, never remanufactured

NEW



ETB526
Electronic Throttle Body
Toyota 2014-03

100% NEW NOT REMAN

1.5 MILLION VIO

NEW



ETB528
Electronic Throttle Body
Toyota 2013-11
VIO over 689,000

100% NEW NOT REMAN

TECH EXPERT™ Electronic Throttle Bodies are always new, never remanufactured

NEW



ETB529
Electronic Throttle Body
Scion 2013-11
Toyota 2013-09

100% NEW NOT REMAN

2.3 MILLION VIO

NEW



ETB530
Electronic Throttle Body
Volkswagen 2000-98
Audi 1999-97
VIO over 80,000

100% NEW NOT REMAN

TECH EXPERT™ Electronic Throttle Bodies are always new, never remanufactured



ETB709
Electronic Throttle Body
Mini Cooper 2006-02

100% NEW NOT REMAN

TECH EXPERT™ Electronic Throttle Bodies are always new, never remanufactured



ETB710
Electronic Throttle Body
Mini Cooper S 2012-07
Mini Cooper S Clubman 2012-08
Mini Cooper S Countryman 2012-11
VIO over 100,000

100% NEW NOT REMAN

TECH EXPERT™ Electronic Throttle Bodies are always new, never remanufactured



ETB713
Electronic Throttle Body
BMW 2001-96

TECH EXPERT™ Electronic Throttle Bodies are always new, never remanufactured



ETB714
Electronic Throttle Body
BMW 2010-05
VIO over 100,000

100% NEW NOT REMAN

TECH EXPERT™ Electronic Throttle Bodies are always new, never remanufactured



ETB716
Electronic Throttle Body
BMW 2001-97
VIO over 240,000

100% NEW NOT REMAN

TECH EXPERT™ Electronic Throttle Bodies are always new, never remanufactured

▶ Headlight Level Sensors

Our line of Headlight Level Sensors covers many popular import applications. Headlight level sensors adjust the headlight beams to the vehicle's height. In doing so, the sensors keep headlight beams pointed on the road during low lighting conditions.

See pages 23-24 for product applications.



ETB728
Electronic Throttle Body
Audi/VW 2014-09

100% NEW NOT REMAN

TECH EXPERT™ Electronic Throttle Bodies are always new, never remanufactured



ETB730
Electronic Throttle Body
Audi/VW 2014-09
VIO over 180,000

100% NEW NOT REMAN

TECH EXPERT™ Electronic Throttle Bodies are always new, never remanufactured



ETB731
Electronic Throttle Body
BMW 2014-10
VIO over 140,000

100% NEW NOT REMAN

TECH EXPERT™ Electronic Throttle Bodies are always new, never remanufactured



ETB733
Electronic Throttle Body
Volkswagen 2005-01
Audi 2006-00
VIO over 301,000

100% NEW NOT REMAN

TECH EXPERT™ Electronic Throttle Bodies are always new, never remanufactured



ETB734
Electronic Throttle Body
Mercedes-Benz 2011-01
VIO over 959,000

100% NEW NOT REMAN

TECH EXPERT™ Electronic Throttle Bodies are always new, never remanufactured



ETB735
Electronic Throttle Body
Mercedes-Benz 2006-01
VIO over 308,000

100% NEW NOT REMAN

TECH EXPERT™ Electronic Throttle Bodies are always new, never remanufactured



ETB736
Electronic Throttle Body
Audi 2006-00
Volkswagen 2005-01
VIO over 205,000

100% NEW NOT REMAN

TECH EXPERT™ Electronic Throttle Bodies are always new, never remanufactured

NEW



ETB737
Electronic Throttle Body
Audi 2006-00
Volkswagen 2005-00
VIO over 199,000

100% NEW NOT REMAN

TECH EXPERT™ Electronic Throttle Bodies are always new, never remanufactured

NEW



ETB738
Electronic Throttle Body
Volkswagen Beetle 2003-01
Volkswagen Golf 2003-01
Volkswagen Jetta 2005-01
VIO over 342,000

100% NEW NOT REMAN

TECH EXPERT™ Electronic Throttle Bodies are always new, never remanufactured

NEW



ETB740
Electronic Throttle Body
Volkswagen Golf 2005-02
Volkswagen Jetta 2004-02

100% NEW NOT REMAN

TECH EXPERT™ Electronic Throttle Bodies are always new, never remanufactured

NEW



ETB741
Electronic Throttle Body
Porsche 2013-06
VIO over 55,000

100% NEW NOT REMAN

TECH EXPERT™ Electronic Throttle Bodies are always new, never remanufactured

NEW



ETB742
Electronic Throttle Body
Volvo 2007-02
VIO over 316,000

100% NEW NOT REMAN

TECH EXPERT™ Electronic Throttle Bodies are always new, never remanufactured

NEW



ETB743
Electronic Throttle Body
Mercedes-Benz 2005-00
VIO over 76,000

100% NEW NOT REMAN

TECH EXPERT™ Electronic Throttle Bodies are always new, never remanufactured

NEW



ETB744
Electronic Throttle Body
Porsche 2014-07

100% NEW NOT REMAN

TECH EXPERT™ Electronic Throttle Bodies are always new, never remanufactured

▶ Headlight Module

TECH EXPERT offers new complete replacement module assemblies to replace failed OE units. Directly matches the OE, so no remanufacturing or “repair kits” are required. Replace the failed unit and restore popular headlight function.

See page 25 for product applications.



NEW



ETB747
Electronic Throttle Body
Mercedes-Benz 2014-07
VIO over 107,000

100% NEW NOT REMAN

TECH EXPERT™ Electronic Throttle Bodies are always new, never remanufactured

NEW



EXP715
Expansion Tank Service Kit
Land Rover Range Rover
2005-03

COMPLETE KIT

*Complete kit replaces leaking expansion tank to restore proper cooling functions
Cap and level sensor included*

NEW



ABV100
Engine Coolant Air Bleeder Valve
Chrysler Sebring 2.7L 2006-01
Dodge Stratus 2.7L 2006-01
VIO over 450,000

PROBLEM SOLVER

TECH EXPERT™ exclusive design features an extra hex nut for holding the valve in place with a wrench while bleeding the coolant, preventing damage to the valve

NEW



EXP720
Expansion Tank Service Kit
Volkswagen 1997-89
VIO over 142,000

COMPLETE KIT

*Complete kit replaces leaking expansion tank to restore proper cooling functions
Cap and level sensor included*

NEW



ABV101
Engine Coolant Air Bleeder Valve
Chrysler 2010-99
Dodge 2010-98
VIO over 653,000

PROBLEM SOLVER

TECH EXPERT™ exclusive design features an extra hex nut for holding the valve in place with a wrench while bleeding the coolant, preventing damage to the valve

NEW



EXP724
Expansion Tank Service Kit
Audi 2004-99
Volkswagen 2005-98
VIO over 427,000

COMPLETE KIT

*Complete kit replaces leaking expansion tank to restore proper cooling functions
Cap and level sensor included*



EXP700
Expansion Tank Service Kit
BMW 2006-00
VIO over 680,000

Includes expansion tank, auto trans oil cooler thermostat, cap, hose-clip, and coolant level sensor to replace cracked coolant tank and restore proper cooling system functions



EXP740
Expansion Tank Service Kit
Audi A6 Quattro 2010-05
VIO over 500,000

COMPLETE KIT

*Complete kit replaces leaking expansion tank to restore proper cooling functions
Cap and level sensor included*

NEW



EXP708
Expansion Tank Service Kit
Mercedes-Benz 2005-98
VIO over 200,000

COMPLETE KIT

*Complete kit replaces leaking expansion tank to restore proper cooling functions
Cap and level sensor included*



FPH100
Fuel Filter Primer
Housing Seal Kit
GM Trucks 2010-01
VIO over 350,000

COMPLETE KIT

Complete kit includes new seals to restore proper system pressure and a brass bleed screw to prevent the screw from stripping like the original

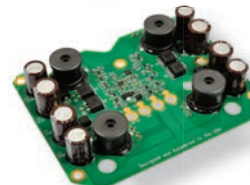
NEW



EXP709
Expansion Tank Service Kit
Mercedes-Benz 2009-01
VIO over 409,000

COMPLETE KIT

*Complete kit replaces leaking expansion tank to restore proper cooling functions
Cap and level sensor included*

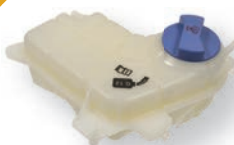


FCM100
Fuel Injection Control Module
(a.k.a. FICM)
Ford 6.0 Diesel Trucks 2010-03
VIO over 800,000

EXPERT SOLUTION

*TECH EXPERT™ designed and built with gold-plated contacts, revised circuit layout and custom electronics
Restore drivability, control heat and maximize board life*

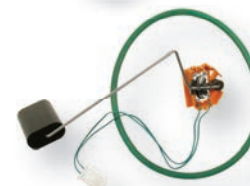
NEW



EXP714
Expansion Tank Service Kit
AUDI A4 2005-02

COMPLETE KIT

*Complete kit replaces leaking expansion tank to restore proper cooling functions
Cap and level sensor included*



FLV100
Fuel Level Sensor
GM Trucks 2009-05
VIO over 1.2 million

PROBLEM SOLVER

Replace just the failed sensor instead of the entire fuel pump assembly

▶ HID Headlight Ballasts

Ballasts power HID headlights. When one overheats and fails, the HID light system won't operate properly. TECH EXPERT's line of direct-replacement HID Headlight Ballasts cover many popular domestic and import applications.

See pages 26-28 for product applications.



FLV102
Fuel Level Sensor
GM 2005-00

2.4 MILLION
VIO



FLV103
Fuel Level Sensor
Nissan Murano 2009-03
VIO over 485,000

PROBLEM SOLVER

Replace just the failed sensor instead of the entire fuel pump assembly



FLV111
Fuel Level Sensor
Chevrolet Malibu 2006-04
VIO over 423,000

PROBLEM SOLVER

Replace just the failed sensor instead of the entire fuel pump assembly



FLV114
Fuel Level Sensor
Chevrolet Malibu 2008-07
VIO over 249,000

PROBLEM SOLVER

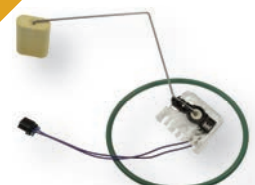
Replace just the failed sensor instead of the entire fuel pump assembly



FLV116
Fuel Level Sensor
Chevy Trucks 2015-11
GMC Trucks 2015-11
VIO over 172,000

PROBLEM SOLVER

Replace just the failed sensor instead of the entire fuel pump assembly



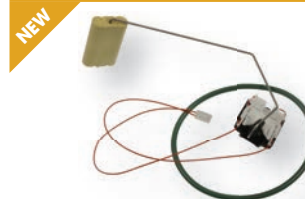
FLV118
Fuel Level Sensor
Chevy Trucks 2007-04
GMC Trucks 2007-04

3.5 MILLION
VIO



FLV119
Fuel Level Sensor
Buick 2005-00
Cadillac 2002-00
Pontiac 2005-00

1.4 MILLION
VIO



K07024
Fuel Level Sensor
Chevy Trucks 2013-07
GMC Trucks 2013-07

3.2 MILLION
VIO



K07029
Fuel Level Sensor
Chevy Vans 2014-10
GMC Vans 2015-10
VIO over 342,000

PROBLEM SOLVER

Replace just the failed sensor instead of the entire fuel pump assembly



FPU100
Fuel Pressure Regulator
Upgrade Kit
(a.k.a. "Blue Spring" Kit)
6.0L Ford Trucks 2007-03
VIO over 725,000

PROBLEM SOLVER

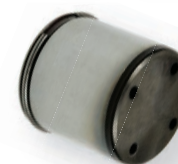
Replaces worn original spring and rebuilds housing with an upgraded spring and new seals to prevent fuel starvation, prolonging injector life



PWL100
Fuel Pressure
Warning Light Kit
Dodge Ram 2500 2007-98
Dodge Ram 3500 2007-98
VIO over 1 million

COMPLETE KIT

Installs in line with the injection pump and illuminates when fuel pressure is low to help warn the driver to shut off the engine before damage occurs to the fuel pump assembly



CMF700
Fuel Pump Cam Follower
VW/Audi 2013-06
VIO over 1.0 million

PROBLEM SOLVER

Replacing the cam follower prevents damage to the fuel pump and camshaft



GRK100
Gear Repair Kit - Speedometer
Ford 1999-94

6.6 MILLION
VIO



GRK500
Gear Repair Kit -
Steering Column
Lexus GS300 1996-93
Lexus LS400 1994-90
VIO over 100,000

COMPLETE KIT

*Replace just the stripped steering column adjustment gear instead of the entire steering column
Restores tilt and telescoping steering column function*

► Horizontal Fuel Conditioning Module

The latest addition to the TECH EXPERT® line is a commonly overlooked component of complex Ford 6.0L Diesel engines, the Horizontal Fuel Conditioning Module. TECH EXPERT's Horizontal Fuel Conditioning Module is a direct OE replacement, is quick to install, and includes a replaceable fuel filter element that can be serviced separately, making it a truly installer-friendly part.

See page 27 for product applications.



GRK501
Gear Repair Kit - Power Seat
Infiniti G35 2007-03
VIO over 360,000

COMPLETE KIT

Replace just the damaged power seat track gears instead of the entire seat track assembly to restore power seat movement



GRK502
Gear Repair Kit - Power Seat
Nissan 350Z 2009-03
Nissan 370Z 2010-09
VIO over 180,000

COMPLETE KIT

Replace just the damaged power seat track gears instead of the entire seat track assembly to restore power seat movement



GRK503
Gear Repair Kit - Power Seat
Nissan/Infiniti 2004-00
VIO over 500,000

COMPLETE KIT

Replace just the damaged power seat track gears instead of the entire seat track assembly to restore power seat movement



GVP100
Governor Pressure Sensor
Dodge Trucks & Vans 2008-00

2.2 MILLION VIO



GVP101
Governor Pressure Sensor & Solenoid Kit
Dodge 2008-00
VIO over 2.2 million

PROBLEM SOLVER

Includes sensor & solenoid for a complete overhaul of RE series auto trans governors



HLM500
Headlight Level Motor
Honda Odyssey 2013-11
VIO over 340,000

PROBLEM SOLVER

Replace just the level motor instead of the whole headlight assembly



HLM501
Headlight Level Motor
Toyota Prius 2011-06
Toyota Prius 2013-12
Toyota 2010-09
VIO over 1.0 million

PROBLEM SOLVER

Replace just the level motor instead of the whole headlight assembly



HLM707
Headlight Level Motor
Audi/VW 2012-00
VIO over 130,000

PROBLEM SOLVER

Replace just the level motor instead of the whole headlight assembly



HLS519
Headlight Level Sensor
Toyota Avalon 2013
Toyota Camry 2013-12
VIO over 140,000

PROVEN QUALITY

Comes complete with new sensor, bracket, and linkage



HLS520
Headlight Level Sensor
Toyota Prius 2013-10
VIO over 660,000

PROVEN QUALITY

Comes complete with new sensor, bracket, and linkage



HLS534
Headlight Level Sensor
Lexus GX470 2009-03
Toyota 4Runner 2009-03
VIO over 730,000

PROVEN QUALITY

Comes complete with new sensor, bracket, and linkage



HLS546
Headlight Level Sensor
Toyota Prius 2009-04
VIO over 620,000

PROVEN QUALITY

Comes complete with new sensor, bracket, and linkage



HLS554
Headlight Level Sensor
Lexus GX470 2009-03
Toyota 4Runner 2009-03
VIO over 730,000

PROVEN QUALITY

Comes complete with new sensor, bracket, and linkage

NEW



HLS565
Headlight Level Sensor
Lexus RX350 2013-10
Lexus RX450h 2013-10
VIO over 409,000

PROVEN QUALITY

High-quality direct replacement for damaged OE leveling sensor that restores proper headlight function

▶ HVAC Air Door Actuators and Blend Door Motors

A vehicle's HVAC system is a key component to driving comfort and proper vehicle operation. TECH EXPERT® has developed blend door, mode door, recirculation door, and defrost door actuators for many of today's most popular vehicle applications.

See pages 28-37 for product applications.



NEW



HLS567
Headlight Level Sensor
Lexus RX350 2013-10
Lexus RX450h 2013-10
VIO over 409,000

PROVEN QUALITY

High-quality direct replacement for damaged OE leveling sensor that restores proper headlight function

NEW



HLS569
Headlight Level Sensor
Lexus GX460 2014-10
VIO over 74,000

PROVEN QUALITY

High-quality direct replacement for damaged OE leveling sensor that restores proper headlight function

NEW



HLS570
Headlight Level Sensor
Lexus HS250h 2012-10
Lexus CT200h 2014-11
VIO over 79,000

PROVEN QUALITY

High-quality direct replacement for damaged OE leveling sensor that restores proper headlight function

NEW



HLS571
Headlight Level Sensor
Lexus 2014-06
VIO over 431,000

PROVEN QUALITY

High-quality direct replacement for damaged OE leveling sensor that restores proper headlight function

NEW



HLS572
Headlight Level Sensor
Lexus GS350 2014-13
Lexus GS450h 2014-13

PROVEN QUALITY

High-quality direct replacement for damaged OE leveling sensor that restores proper headlight function



HLS700
Headlight Level Sensor
BMW Cars & SUVs 2010-97

2.4 MILLION
VIO

PROVEN QUALITY

High-quality direct replacement for damaged OE leveling sensor that restores proper headlight function



HLS701
Headlight Level Sensor
BMW 2011-97
VIO over 1 million

PROVEN QUALITY

High-quality direct replacement for damaged OE leveling sensor that restores proper headlight function



HLS703
Headlight Level Sensor
Mercedes-Benz 2011-98
VIO over 2.2 million

PROVEN QUALITY

High-quality direct replacement for damaged OE leveling sensor that restores proper headlight function

NEW



LCM700
Headlight Module
BMW X3 2015-11
VIO over 126,000

100% NEW NOT REMAN

Replaces high failure rate OE lighting control module with 100% new complete replacement assembly

NEW



LCM703
Headlight Module
Volkswagen 2014-09
Audi 2014-08
VIO over 208,000

100% NEW NOT REMAN

Replaces high failure rate OE lighting control module with 100% new complete replacement assembly



HWH101
Headlight Wiring Harness
High-temp H11 Bulb Harness

PROBLEM SOLVER

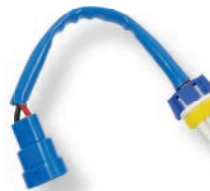
High-temp design prevents the connector from melting when using high intensity aftermarket light bulbs



HWH102
Headlight Wiring Harness
High-temp H7 Bulb Harness

PROBLEM SOLVER

High-temp design prevents the connector from melting when using high intensity aftermarket light bulbs



HWH103
Headlight Wiring Harness
High-temp 9005 Bulb Harness

PROBLEM SOLVER

High-temp design prevents the connector from melting when using high intensity aftermarket light bulbs



HWH104
Headlight Wiring Harness
High-temp 9006 & 9006XS Bulb Harness

PROBLEM SOLVER

High-temp design prevents the connector from melting when using high intensity aftermarket light bulbs

► Hybrid Drive Coolant Pump

Restores proper coolant flow to reduce operating temperatures of hybrid drive transaxle.

See page 37 for product applications.



HWH105
Headlight Wiring Harness
High-temp 9004 &
9007 Bulb Harness

PROBLEM SOLVER

High-temp design prevents the connector from melting when using high intensity aftermarket light bulbs



HWH106
Headlight Wiring Harness
High-temp 9003 &
H4 Bulb Harness

PROBLEM SOLVER

High-temp design prevents the connector from melting when using high intensity aftermarket light bulbs



HWH107
Headlight Wiring Harness
High-temp H1 &
H3 Bulb Harness

PROBLEM SOLVER

High-temp design prevents the connector from melting when using high intensity aftermarket light bulbs



HRK100
HEI Harness Repair Kit
GM 1995-75
VIO over 2.8 million

PROBLEM SOLVER

Repairs worn tachometer & power leads for vehicles with HEI distributors



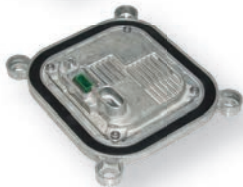
HID102
HID Ballast
GM Trucks 2006-03

3.0 MILLION
VIO



HID502
HID Ballast
Nissan/Infiniti 2013-04

2.4 MILLION
VIO



HID113
HID Headlight Ballast
Ford 2014-09
VIO over 1.2 million

EXPERT SOLUTION

High-quality, direct replacement for burned-out Xenon Ballasts

NEW



HID730
HID Headlight Ballast
Mercedes-Benz 2014-12
VIO over 373,000

EXPERT SOLUTION

High-quality, direct replacement for burned-out Xenon Ballasts



HID114
HID Headlight Ballast
Lincoln Navigator 2005-03
Lincoln Town Car 2011-02
VIO over 390,000

EXPERT SOLUTION

High-quality, direct replacement for burned-out Xenon Ballasts

NEW



HID734
HID Headlight Ballast
Audi 2014-11
VIO over 316,000

EXPERT SOLUTION

High-quality, direct replacement for burned-out Xenon Ballasts

► Memory Seat Position Sensor

Today's vehicles are designed with families in mind. Multiple drivers behind the wheel, each with a different preference for seat location. When the sensor that stores these different preferences fails, TECH EXPERT has you covered with our new offering of Memory Seat Position Sensors.

See page 44 for product applications.



NEW



HID736
HID Headlight Ballast
BMW 2015-09
VIO over 735,000

EXPERT SOLUTION

*High-quality,
direct replacement for
burned-out Xenon Ballasts*

NEW



HID741
HID Headlight Ballast
Audi 2009-05
Cadillac 2008-06
Saab 2009-05
Saturn 2010-07
VIO over 479,000

EXPERT SOLUTION

*High-quality,
direct replacement for
burned-out Xenon Ballasts*

NEW



HFM100
Horizontal Fuel Conditioning
Module
Ford Trucks 2007-03
VIO over 758,000

EXPERT SOLUTION

*Replaces high failure rate
OE lighting control module
with 100% new complete
replacement assembly*



ADA104
HVAC Temperature Blend
Door Motor
Ford/Lincoln/Mercury 2005-96

**4.3 MILLION
VIO**



ADA105
HVAC Temp. Blend &
Recirculation Mode Door Motor
Jeep Grand Cherokee 2004-99

**1.2 MILLION
VIO**



ADA106
HVAC Floor Mode
Door Motor
Ford/Lincoln/Mercury 2010-01

**3.1 MILLION
VIO**



ADA100
HVAC Temperature Blend
Door Motor
Ford Trucks 2010-02
VIO over 2.3 million

EXPERT SOLUTION

*Chamfered pins ensure
OE-quality connector fit
and ease of installation*



ADA107
HVAC Temperature Blend
Door Motor
Ford/Lincoln/Mercury 2008-04

**2.4 MILLION
VIO**



ADA101
HVAC Temperature Blend
Door Motor
Ford Trucks 2007-99

**2.0 MILLION
VIO**



ADA108
HVAC Temperature Blend
Door Motor
Ford Taurus 2007-96

**3.4 MILLION
VIO**



ADA102
HVAC Temperature Blend
Door Motor
Ford 2010-96

**5.5 MILLION
VIO**



ADA110
HVAC Temperature Blend
Door Motor
Ford/Lincoln/Mercury 2010-90
VIO over 1.7 million

EXPERT SOLUTION

*Chamfered pins ensure
OE-quality connector fit
and ease of installation*



ADA103
HVAC Temperature Blend
Door Motor
Ford Trucks 2004-97

**5.2 MILLION
VIO**



ADA111
HVAC Temperature Blend
& Recirculation Mode Door Motor
GM Cars & Trucks 2008-95

**5.5 MILLION
VIO**

► Overrunning Alternator Pulley

With TECH EXPERT's new line of Overrunning Alternator Pulleys, you can replace a damaged pulley without spending time replacing the entire alternator assembly. Once installed, TECH EXPERT's Overrunning Alternator Pulley will reduce stress on the belt drive system, leading to improved performance and a smoother, quieter ride. The direct-replacement parts cover over 3 million VIO. Includes new dust covers.

See pages 44-46 for product applications.



ADA112
HVAC Temp. Blend, Recirculation,
& Floor Mode Door Motor
GM 2010-04

6.5 MILLION
VIO



ADA124
HVAC Recirculation Mode
Door Motor
GM 2011-03

4.0 MILLION
VIO



ADA113
HVAC Temperature Blend
Door Motor
Ford Light Trucks 2010-09

1.5 MILLION
VIO



ADA125
HVAC Temperature Blend
Door Motor
GM 2006-91

9.6 MILLION
VIO



ADA114
HVAC Floor Mode
Door Motor
GM Trucks 2010-03

7.2 MILLION
VIO



ADA126
HVAC Temperature Blend
Door Motor
GM 2005-95

4.2 MILLION
VIO



ADA115
HVAC Temperature Blend
Door Motor
Ford/Mercury 2010-07

2.2 MILLION
VIO



ADA129
HVAC Recirculation Mode
Door Motor
GM 2009-02

2.1 MILLION
VIO



ADA117
HVAC Temperature Blend
Door Motor
GM Light Trucks 2002-99

7.1 MILLION
VIO



ADA131
HVAC Temperature Blend
Door Motor
Ford/Lincoln/Mercury 1997-93
VIO over 650,000

EXPERT SOLUTION
*Chamfered pins ensure
OE-quality connector fit
and ease of installation*



ADA119
HVAC Defrost Mode Door Motor
Ford 2010-04

2.5 MILLION
VIO



ADA137
HVAC Temperature
Blend Door Motor
GM Cars & Trucks 2005-95

17.2 MILLION
VIO



ADA121
HVAC Recirculation Mode
Door Motor
GM 2009-00

7.5 MILLION
VIO



ADA153
HVAC Temperature Blend
Door Motor
Ford Edge 2013-07
Lincoln MKX 2013-07
VIO over 500,000

EXPERT SOLUTION
*Fit, form, function is an
exact-match to OE design*



ADA154
 HVAC Temperature Blend
 Door Motor
 Ford Edge 2013-07
 Lincoln MKX 2013-07
VIO over 500,000

EXPERT SOLUTION

*Fit, form, function is an
 exact-match to OE design*



ADA156
 HVAC Defrost & Floor
 Mode Door Motor
 Ford/Lincoln/Mercury
 Trucks 2012-07

**2.8 MILLION
 VIO**



ADA159
 HVAC Temperature Blend
 Door Motor
 Ford Fusion 2012-10
 Lincoln MKX 2012-10
 Mercury Milan 2012-10
VIO over 900,000

EXPERT SOLUTION

*Fit, form, function is an
 exact-match to OE design*



ADA160
 HVAC Recirculation Mode
 Door Motor
 Ford Fusion 2012-10
 Lincoln MKZ 2012-10
 Mercury Milan 2011-10
VIO over 900,000

EXPERT SOLUTION

*Fit, form, function is an
 exact-match to OE design*



ADA162
 HVAC Temperature Blend
 Door Motor
 Ford Fusion 2012-10
 Lincoln MKZ 2012-10
 Mercury 2011-10
VIO over 880,000

EXPERT SOLUTION

*Direct replacement for
 damaged OE HVAC Temperature
 Blend Door Motor*



ADA165
 HVAC Temperature Blend
 Door Motor
 Ford Thunderbird 1996-94
 Mercury Cougar 1996-94
VIO over 100,000

EXPERT SOLUTION

*Direct replacement for
 damaged OE HVAC Temperature
 Blend Door Motor*



ADA173
 HVAC Recirculation Mode
 Door Motor
 Ford/Lincoln/Mercury 2013-08

**1.5 MILLION
 VIO**



ADA178
 HVAC Temperature Blend
 Door Motor
 Ford Trucks 2007-03
VIO over 500,000

EXPERT SOLUTION

*Chamfered pins ensure
 OE-quality connector fit
 and ease of installation*



ADA183
 HVAC Temperature Blend &
 Floor Mode Motor
 Ford Expedition 2008-07
 Ford Focus 2007-02
 Lincoln Navigator 2008-07

**1.2 MILLION
 VIO**



ADA187
 HVAC Temperature Blend &
 Floor Mode Motor
 Ford Trucks 2012-10

EXPERT SOLUTION

*Fit, form, function is an
 exact-match to OE design*



ADA189
 HVAC Temperature Blend
 Door Motor
 Ford Mustang 2012-10
VIO over 200,000

EXPERT SOLUTION

*Fit, form, function is an
 exact-match to OE design*



ADA198
 HVAC Recirculation Mode
 Door Motor
 Ford 2009-05
VIO over 570,000

EXPERT SOLUTION

*Fit, form, function is an
 exact-match to OE design*



ADA200
 HVAC Temperature Blend
 Door Motor
 Ford Freestar 2007-04
 Mercury Monterey 2007-04
VIO over 250,000

EXPERT SOLUTION

*Fit, form, function is an
 exact-match to OE design*



ADA202
 HVAC Temperature Blend
 Door Motor
 Ford Expedition 2002-97
 Ford Explorer 2001-95
 Lincoln Navigator 2002-98
 Mercury Mountaineer 2001-97

**3.0 MILLION
 VIO**

▶ Park Assist Sensors

Park assist sensors (known as back-up sensors) have high failure rates. To help with repair, TECH EXPERT® offers an array of Park Assist Sensors for various makes and models. Each sensor is a direct-replacement part, not a universal retrofit kit.

See pages 46-47 for product applications.



ADA204
HVAC Recirculation Mode
Door Motor
Ford Freestyle 2007-05
Ford Five Hundred 2007-05
Mercury Montego 2007-05
VIO over 440,000

EXPERT SOLUTION

Fit, form, function is an exact-match to OE design



ADA222
HVAC Temperature Blend
& Floor Mode Door Motor
Jeep Grand Cherokee 2004-99

1.1 MILLION VIO



ADA205
HVAC Temperature Blend
& Floor Mode Door Motor
GM Trucks 2008-03

1.3 MILLION VIO



ADA504
HVAC Temperature
Blend Door Motor
Hyundai Azera 2010-06
Hyundai Santa Fe 2010-06
Hyundai Sonata 2010-08
VIO over 720,000

EXPERT SOLUTION

Fit, form, function is an exact-match to OE design



ADA208
HVAC Temperature Blend
Door Motor
GM 2005-01
VIO over 780,000

EXPERT SOLUTION

Direct replacement for damaged OE HVAC Temperature Blend Door Motor



ADA508
HVAC Recirculation Mode
Door Motor
Hyundai Accent 2009-07
Hyundai Elantra 2010-07
VIO over 545,000

EXPERT SOLUTION

Fit, form, function is an exact-match to OE design



ADA209
HVAC Temperature Blend &
Recirculation Door Motor
GM 2011-05

2.0 MILLION VIO

NEW



ADA509
HVAC Air Door Actuator
Dodge Durango 2013-11
Jeep Grand Cherokee 2013-11
VIO over 498,000

EXPERT SOLUTION

Fit, form, function is an exact-match to OE design



ADA210
HVAC Temperature Blend
Door Motor
GM 2005-00

1.0 MILLION VIO

NEW



ADA510
HVAC Air Door Actuator
Dodge 2014-09
Chrysler 2015-13

2.1 MILLION VIO



ADA215
HVAC Temperature Blend
Door Motor
GM Trucks 2013-07

4.3 MILLION VIO

NEW



ADA511
HVAC Air Door Actuator
Ram Trucks 2014-11

1.3 MILLION VIO



ADA220
HVAC Temperature Blend
& Floor Mode Door Motor
GM 2012-07

1.0 MILLION VIO



ADA700
HVAC Temperature Blend
Door Motor
BMW 2014-04
VIO over 1.3 million

EXPERT SOLUTION

Direct replacement for damaged OE HVAC Temperature Blend Door Motor

NEW



ADA701
HVAC Air Door Actuator
Volkswagen 2004-98
VIO over 800,000

EXPERT SOLUTION

Fit, form, function is an exact-match to OE design

NEW



ADA703
HVAC Air Door Actuator
Audi 2006-00
Volkswagen 2004-98
VIO over 791,000

EXPERT SOLUTION

Fit, form, function is an exact-match to OE design

NEW



ADA704
HVAC Air Door Actuator
Volkswagen Passat 2005-03
VIO over 172,000

EXPERT SOLUTION

Fit, form, function is an exact-match to OE design

NEW



ADA705
HVAC Air Door Actuator
Volkswagen Passat 2005-99
VIO over 374,000

EXPERT SOLUTION

Fit, form, function is an exact-match to OE design

NEW



ADA706
HVAC Air Door Actuator
Volkswagen Jetta 2005-02
Volkswagen Golf 2005-03
VIO over 433,000

EXPERT SOLUTION

Fit, form, function is an exact-match to OE design

NEW



ADA707
HVAC Air Door Actuator
Volkswagen Jetta 2005-03
VIO over 270,000

EXPERT SOLUTION

Fit, form, function is an exact-match to OE design

NEW



ADA708
HVAC Air Door Actuator
Volkswagen Jetta 2007-04
VIO over 338,000

EXPERT SOLUTION

Fit, form, function is an exact-match to OE design

NEW



ADA709
HVAC Air Door Actuator
Volkswagen Beetle 2010-98
VIO over 477,000

EXPERT SOLUTION

Fit, form, function is an exact-match to OE design

NEW



ADA710
HVAC Air Door Actuator
Mercedes-Benz 2001-99
VIO over 112,000

EXPERT SOLUTION

Fit, form, function is an exact-match to OE design

NEW



ADA711
HVAC Air Door Actuator
Volkswagen 2005-99
Audi 2006-00
VIO over 783,000

EXPERT SOLUTION

Fit, form, function is an exact-match to OE design

NEW



ADA712
HVAC Air Door Actuator
Volkswagen 2014-07

1.4 MILLION VIO

NEW



HCP100
Hybrid Drive Coolant Pump
Ford Trucks 2008-05

PROVEN QUALITY

Restores proper coolant flow to reduce operating temperatures of hybrid drive transaxle

NEW



HCP500
Hybrid Drive Coolant Pump
Toyota Prius 2015-10
Lexus CT200h 2015-11
VIO over 1 million

PROVEN QUALITY

Restores proper coolant flow to reduce operating temperatures of hybrid drive transaxle

NEW



HCP501
Hybrid Drive Coolant Pump
Toyota 2014-12
Lexus 2014-13
VIO over 262,000

PROVEN QUALITY

Restores proper coolant flow to reduce operating temperatures of hybrid drive transaxle

Rain Sensor

New vehicles are always looking to expand their features and certain models are coming equipped to deal with the weather. Rain sensors are responsible for automatically turning on the windshield wipers when the weather takes a turn, and can be a common failure due to water intrusion. TECH EXPERT has an offering of exact match sensors that will fix the failed unit and restore function to this important safety feature.

See page 48 for product applications.



CRK700
Ignition Coil Harness Repair Kit
Audi/VW 2006-00
VIO over 280,000

PROBLEM SOLVER

Repair only the damaged portion instead of replacing the entire harness



CMK100
Ignition Coil Maintenance Kit
GM Trucks 2006-02
VIO over 1.5 million

PROBLEM SOLVER

Helps reduce water intrusion in the boot, increasing coil life



KEY100
Keyless Entry Transmitter
Ford 2011-98

13.4 MILLION VIO



KEY101
Keyless Entry Transmitter
Ford 2013-98

12.9 MILLION VIO



KEY102
Keyless Entry Transmitter
GM 2012-04

2.0 MILLION VIO



KEY103
Keyless Entry Transmitter
GM 2012-06
VIO 1.7 million

EXPERT SOLUTION

*High-quality direct replacement for failed OE key fobs
Complete unit matches fit, form, and function of the original unit*



KEY104
Keyless Entry Transmitter
GM Trucks 2007-02

2.1 MILLION VIO



KEY105
Keyless Entry Transmitter
GM 2009-05
VIO over 720,000

EXPERT SOLUTION

*High-quality direct replacement for failed OE key fobs
Complete unit matches fit, form, and function of the original unit*



KEY106
Keyless Entry Transmitter
GM 2013-06
VIO 1.3 million

EXPERT SOLUTION

*High-quality direct replacement for failed OE key fobs
Complete unit matches fit, form, and function of the original unit*



KEY107
Keyless Entry Transmitter
GM Trucks 2009-02

2.3 MILLION VIO



KEY108
Keyless Entry Transmitter
GM 2009-05
VIO over 720,000

EXPERT SOLUTION

*High-quality direct replacement for failed OE key fobs
Complete unit matches fit, form, and function of the original unit*



KEY109
Keyless Entry Transmitter
GM 2006-05

1.1 MILLION VIO



KEY110
Keyless Entry Transmitter
GM Trucks 2009-07
VIO over 545,000

EXPERT SOLUTION

*High-quality direct replacement for failed OE key fobs
Complete unit matches fit, form, and function of the original unit*



KEY111
Keyless Entry Transmitter
GM 2013-06

1.0 MILLION VIO



KEY112
Keyless Entry Transmitter
GM 2013-07

2.3 MILLION
VIO



KEY113
Keyless Entry Transmitter
GM Trucks 2013-07

1.3 MILLION
VIO



KEY114
Keyless Entry Transmitter
GM 2011-09
VIO over 500,000

EXPERT SOLUTION

*High-quality direct replacement
for failed OE key fobs
Complete unit matches fit, form,
and function of the original unit*



KEY115
Keyless Entry Transmitter
Chevrolet Trucks 2013-07

1.3 MILLION
VIO



KEY116
Keyless Entry Transmitter
GM Trucks 2010-07
VIO 1.0 million

EXPERT SOLUTION

*High-quality direct replacement
for failed OE key fobs
Complete unit matches fit, form,
and function of the original unit*



KEY117
Keyless Entry Transmitter
GM Trucks 2013-07

3.3 MILLION
VIO



KEY118
Keyless Entry Transmitter
GM Trucks 2004-01

2.0 MILLION
VIO



KEY119
Keyless Entry Transmitter
GM Trucks 2013-07
VIO 1.3 million

EXPERT SOLUTION

*High-quality direct replacement
for failed OE key fobs
Complete unit matches fit, form,
and function of the original unit*



KEY120
Keyless Entry Transmitter
GM 2011-05
VIO over 870,000

EXPERT SOLUTION

*High-quality direct replacement
for failed OE key fobs
Complete unit matches fit, form,
and function of the original unit*



KEY122
Keyless Entry Transmitter
GM 2011-01

1.7 MILLION
VIO



KEY123
Keyless Entry Transmitter
GM Trucks 2001-98

3.0 MILLION
VIO



KEY125
Keyless Entry Transmitter
GM 2007-01
VIO over 530,000

EXPERT SOLUTION

*High-quality direct replacement
for failed OE key fobs
Complete unit matches fit, form,
and function of the original unit*



KEY126
Keyless Entry Transmitter
GM 2005-01

1.0 MILLION
VIO



KEY128
Keyless Entry Transmitter
GM 2009-05
VIO over 400,000

EXPERT SOLUTION

*High-quality direct replacement
for failed OE key fobs
Complete unit matches fit, form,
and function of the original unit*

► Ride Height Sensors

On many GM trucks with auto-leveling suspension, the ride height sensors are underneath the body. As a result, they're susceptible to damage and failure from crashes or water/road salt intrusion. To make repair easier, TECH EXPERT's Ride Height Sensor comes with the bracket and linkage. In total, TECH EXPERT's line of Ride Height Sensors covers 30 million VIO.

See pages 49-50 for product applications.



KEY129
Keyless Entry Transmitter
GM 2009-05
VIO over 850,000

EXPERT SOLUTION

High-quality direct replacement for failed OE key fobs
Complete unit matches fit, form, and function of the original unit



KEY130
Keyless Entry Transmitter
GM 2009-06
VIO over 315,000

EXPERT SOLUTION

High-quality direct replacement for failed OE key fobs
Complete unit matches fit, form, and function of the original unit



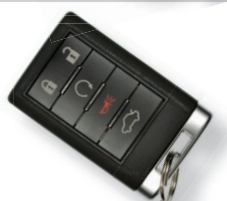
KEY132
Keyless Entry Transmitter
GM 2005-01

3.0 MILLION VIO



KEY133
Keyless Entry Transmitter
GM 2005-01

3.1 MILLION VIO



KEY134
Keyless Entry Transmitter
Cadillac CTS 2013-12
Cadillac DTS 2011-10

EXPERT SOLUTION

High-quality direct replacement for failed OE key fobs
Complete unit matches fit, form, and function of the original unit



KEY135
Keyless Entry Transmitter
Cadillac CTS 2013-12
Cadillac DTS 2011-10

EXPERT SOLUTION

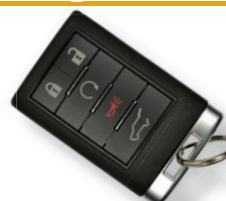
High-quality direct replacement for failed OE key fobs
Complete unit matches fit, form, and function of the original unit



KEY136
Keyless Entry Transmitter
Cadillac CTS 2013-12

EXPERT SOLUTION

High-quality direct replacement for failed OE key fobs
Complete unit matches fit, form, and function of the original unit



KEY137
Keyless Entry Transmitter
Cadillac CTS 2013-12

EXPERT SOLUTION

High-quality direct replacement for failed OE key fobs
Complete unit matches fit, form, and function of the original unit



KEY138
Keyless Entry Transmitter
Cadillac Escalade 2013-08
VIO over 160,000

EXPERT SOLUTION

High-quality direct replacement for failed OE key fobs
Complete unit matches fit, form, and function of the original unit



KEY139
Keyless Entry Transmitter
Cadillac Escalade 2013-10
VIO over 160,000

EXPERT SOLUTION

High-quality direct replacement for failed OE key fobs
Complete unit matches fit, form, and function of the original unit



KEY140
Keyless Entry Transmitter
Cadillac Escalade 2013-10
VIO over 160,000

EXPERT SOLUTION

High-quality direct replacement for failed OE key fobs
Complete unit matches fit, form, and function of the original unit



KEY141
Keyless Entry Transmitter
Cadillac Escalade 2013-11
VIO over 160,000

EXPERT SOLUTION

High-quality direct replacement for failed OE key fobs
Complete unit matches fit, form, and function of the original unit



KEY142
Keyless Entry Transmitter
Cadillac CTS 2013-12
Cadillac DTS 2011-10

EXPERT SOLUTION

High-quality direct replacement for failed OE key fobs
Complete unit matches fit, form, and function of the original unit



KEY143
Keyless Entry Transmitter
Cadillac CTS 2013-12
Cadillac DTS 2011-10

EXPERT SOLUTION

High-quality direct replacement for failed OE key fobs
Complete unit matches fit, form, and function of the original unit



KEY144
Keyless Entry Transmitter
Cadillac CTS 2013

EXPERT SOLUTION

High-quality direct replacement for failed OE key fobs
Complete unit matches fit, form, and function of the original unit



KEY145
Keyless Entry Transmitter
Cadillac CTS 2013-10

EXPERT SOLUTION

High-quality direct replacement for failed OE key fobs
Complete unit matches fit, form, and function of the original unit



KEY146
Keyless Entry Transmitter
Chevrolet/GMC Vans 2010

EXPERT SOLUTION

High-quality direct replacement for failed OE key fobs
Complete unit matches fit, form, and function of the original unit



KEY147
Keyless Entry Transmitter
Chevrolet/GMC Vans 2011
VIO over 390,000

EXPERT SOLUTION

High-quality direct replacement for failed OE key fobs
Complete unit matches fit, form, and function of the original unit



TRH102
Knock Sensor Wiring Harness
GM V8 Engines 2007-99
VIO over 9.1 million

EXPERT SOLUTION

Replaces a cracked, frayed, or damaged knock sensor harness on GM 8-cylinder engines

NEW



SPS100
Memory Seat Position Sensor
Lincoln 2013-06
Ford 2010-05
Mercury 2010-06
VIO over 2.9 million

EXPERT SOLUTION

Replace failed OE unit to restore driver seat memory position

NEW



OAP100
Overrunning Alternator Pulley
Ford Escape 2007-05
Mazda Tribute 2006-05
Mercury Mariner 2007-05
VIO over 171,000

EXPERT SOLUTION

Replace failed pulley, not the entire alternator
Includes dust cover

NEW



OAP102
Overrunning Alternator Pulley
Dodge Vans 2013-07
Mercedes-Benz Vans 2013-10
VIO over 77,000

EXPERT SOLUTION

Replace failed pulley, not the entire alternator
Includes dust cover

NEW



OAP501
Overrunning Alternator Pulley
Mazda 6 2005-03

EXPERT SOLUTION

Replace failed pulley, not the entire alternator
Includes dust cover

NEW



OAP700
Overrunning Alternator Pulley
Volvo S40 2004-00
Volvo V40 2004-00
VIO over 91,000

EXPERT SOLUTION

Replace failed pulley, not the entire alternator
Includes dust cover

NEW



OAP701
Overrunning Alternator Pulley
Audi Q7 2010-07
Volkswagen Touareg 2010-04

EXPERT SOLUTION

Replace failed pulley, not the entire alternator
Includes dust cover

NEW

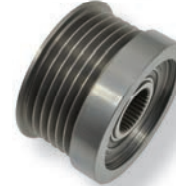


OAP702
Overrunning Alternator Pulley
Volkswagen 1999-92
VIO over 157,000

EXPERT SOLUTION

Replace failed pulley, not the entire alternator
Includes dust cover

NEW



OAP703
Overrunning Alternator Pulley
Volvo 2009-99
VIO over 568,000

EXPERT SOLUTION

Replace failed pulley, not the entire alternator
Includes dust cover

NEW



OAP704
Overrunning Alternator Pulley
Audi 2010-02
Volkswagen 2013-05
VIO over 589,000

EXPERT SOLUTION

Replace failed pulley, not the entire alternator
Includes dust cover

NEW



OAP705
Overrunning Alternator Pulley
Audi 2006-02
Volkswagen 2001-98
VIO over 171,000

EXPERT SOLUTION

*Replace failed pulley,
not the entire alternator
Includes dust cover*

NEW



OAP706
Overrunning Alternator Pulley
Audi 2013-12
Volkswagen 2013-05
VIO over 731,000

EXPERT SOLUTION

*Replace failed pulley,
not the entire alternator
Includes dust cover*



PAS100
Park Assist Sensor
Ford/Lincoln/Mercury 2011-01

8.9 MILLION VIO



PAS101
Park Assist Sensor
Ford/Lincoln/Mercury 2011-05
VIO over 590,000

PROVEN QUALITY

*High-quality, direct
replacement for
damaged sensors*



PAS102
Park Assist Sensor
Ford/Lincoln/Mercury 2011-05

1.7 MILLION VIO



PAS107
Park Assist Sensor
Ford Excursion 2005-01
Ford Expedition 2002
VIO over 200,000

PROVEN QUALITY

*High-quality, direct
replacement for
damaged sensors*



PAS108
Park Assist Sensor
Ford/Lincoln/Mercury 2013-09

2.5 MILLION VIO



PAS109
Park Assist Sensor
Ford F-150 2013-09

1.4 MILLION VIO



PAS111
Park Assist Sensor
Ford/Lincoln 2013-10
VIO over 1.3 million

PROVEN QUALITY

*High-quality, direct
replacement for
damaged sensors*

NEW



PAS116
Park Assist Sensor
Ford Transit Connect 2014-10
VIO over 177,000

PROVEN QUALITY

*High-quality, direct
replacement for
damaged sensors*



PAS700
Park Assist Sensor
BMW 2010-06

1.4 MILLION VIO



PAS701
Park Assist Sensor
BMW 2008-02
VIO over 660,000

PROVEN QUALITY

*High-quality, direct
replacement for
damaged sensors*



PAS710
Park Assist Sensor
Mercedes-Benz 2012-98

1.6 MILLION VIO



PMK100
PMD Relocation Kit
GM Diesel Trucks 2004-94
VIO over 280,000

COMPLETE KIT

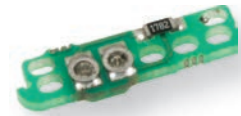
*Includes new PMD, heat sink,
relocation harness, #9 resistor, and
installation hardware to relocate
the PMD away from heat exposure*



PMK101
PMD Relocation Kit
GM 6.5L Diesel Trucks 2004-94
VIO over 280,000

PROBLEM SOLVER

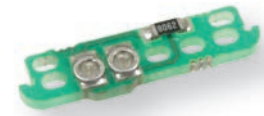
Relocate a functioning PMD to prevent failure due to excessive heat exposure



PMR100
PMD Resistor #5
GM Diesel Trucks 2004-94
VIO over 280,000

PROBLEM SOLVER

#5 resistor offers enhanced drivability over OE



PMR101
PMD Resistor #9
GM Diesel Trucks 2004-94
VIO over 280,000

PROBLEM SOLVER

#9 resistor offers enhanced drivability over OE



PDC700
Power Distribution Center
Volkswagen 2010-99
VIO over 1.4 million

COMPLETE KIT

Upgraded design reduces resistance to prevent melting and heat failure



PDC701
Power Distribution Center
Volkswagen Beetle 2003-98
Volkswagen Jetta 2000-99
VIO over 520,000

COMPLETE KIT

Upgraded design reduces resistance to prevent melting and heat failure

NEW



RSS510
Rain Sensor
Mazda 2015-06
VIO over 1.1 million

PROVEN QUALITY

High-quality, direct replacement for damaged sensors

NEW



RSS700
Rain Sensor
BMW 2006-00
VIO over 1 million

PROVEN QUALITY

High-quality, direct replacement for damaged sensors



RHS100
Ride Height Sensor
GM Trucks 2011-06

4.6 MILLION VIO



RHS101
Ride Height Sensor
GM Trucks 2011-07

4.6 MILLION VIO



RHS103
Ride Height Sensor
GM Trucks 2011-06
VIO over 4.7 million

EXPERT SOLUTION

High-quality, direct replacement for damaged OE sensors



RHS104
Ride Height Sensor
GM Trucks 2011-07

4.6 MILLION VIO

NEW



RHS110
Ride Height Sensor
Cadillac XLR 2009-04
Chevrolet Corvette 2011-04
VIO over 200,000

EXPERT SOLUTION

High-quality, direct replacement for damaged OE sensors

NEW



RHS111
Ride Height Sensor
Chevy Trucks 2006-04
GMC Trucks 2006-04

3.8 MILLION VIO

NEW



RHS119
Ride Height Sensor
Cadillac CTS 2014-08
VIO over 294,000

EXPERT SOLUTION

High-quality, direct replacement for damaged OE sensors

▶ Trunk Latch Actuator Repair Kit

A common failure for certain Mercedes-Benz applications is a broken trunk latch actuator. Due to a weaker plastic on the original design, the actuator can break and cause the trunk not to open. TECH EXPERT's Trunk Latch Actuator Repair Kit replaces only the broken piece in the assembly, saving shops time and money. With a thicker inner wall, more rounded edges on the locking slot, and an upgraded nylon material, TECH EXPERT's Trunk Latch Actuator Repair Kit will last longer and perform better than the original.

See page 54 for product applications.



NEW



RHS120
Ride Height Sensor
Cadillac CTS 2014, 2012-09
VIO over 277,000

EXPERT SOLUTION

High-quality, direct replacement for damaged OE sensors

NEW



RHS121
Ride Height Sensor
Cadillac SRX 2006-04
Cadillac CTS 2006-05
Cadillac STS 2006-05
VIO over 228,000

EXPERT SOLUTION

High-quality, direct replacement for damaged OE sensors



CST101
Steering Column Shift Tube
Ford/Lincoln/Mercury 2011-90

11.6 MILLION
VIO



CST102
Steering Column Shift Tube Bushing
Ford/Lincoln/Mercury 2011-90
VIO over 23.5 million

*High-quality replacement for worn OE bushing
For use with CST100 and CST101*



SLA100
Shift Interlock Actuator
Ford 2009-92

21.5 MILLION
VIO



TCB100
Tail Light Circuit Board
Dodge Trucks 2006-03
VIO over 1.5 million

PROBLEM SOLVER

High-quality direct replacement for failed OE circuit boards



SLA700
Shift Interlock Lever
Mercedes-Benz 2011-00
VIO over 190,000

PROVEN QUALITY

*Replace just the broken shift lever instead of the entire shift assembly
Billet aluminum design replaces weak OE plastic*



TCB102
Tail Light Circuit Board
GM Trucks 2000-92
VIO over 5.1 million

PROBLEM SOLVER

Includes gasket to protect circuit board from water intrusion



SLA102
Shift Interlock Lever
Chrysler/Dodge 2008-05
VIO over 1.1 million

PROVEN QUALITY

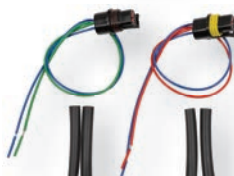
*Replace just the broken shift lever instead of the entire shift assembly
Billet aluminum design replaces weak OE plastic*



TCB103
Tail Light Circuit Board
GM Trucks 2000-92
VIO over 5.1 million

PROBLEM SOLVER

Includes gasket to protect circuit board from water intrusion



TRH100
Speed Sensor Harness Repair Kit
Dodge/Plymouth 1997-91
VIO over 3.1 million

COMPLETE KIT

Repair damaged speed sensor harnesses without replacing the entire harness



TCB104
Tail Light Circuit Board
GM Minivans 2005-97
VIO over 1.8 million

PROBLEM SOLVER

Replaces both the LH and RH failed OE units



CST100
Steering Column Shift Tube
Ford/Lincoln/Mercury 2007-90

11.3 MILLION
VIO



TCB109
Tail Light Circuit Board
Pontiac Grand Am 2005-99
VIO over 960,000

EXPERT SOLUTION

High-quality direct replacement restores proper tail light function

▶ Vertical Fuel Conditioning Module

The latest addition to the TECH EXPERT® line is a commonly overlooked component of complex Ford 6.0L Diesel engines, the Vertical Fuel Conditioning Module. TECH EXPERT's Vertical Fuel Conditioning Module is a direct OE replacement, is quick to install, and includes a replaceable fuel filter element that can be serviced separately, making it a truly installer-friendly part.

See page 56 for product applications.



TCB111
Tail Light Circuit Board
Jeep Grand Cherokee 2006-05
VIO over 320,000

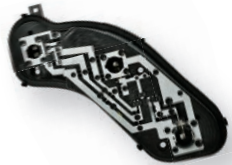
EXPERT SOLUTION

High-quality direct replacement for failed OE tail light circuit boards.



BLA100
Third Brake Light
Chevy Tahoe/Suburban 2006-03
GMC Yukon/Yukon XL 2006-03
VIO over 1.4 million

*Brighter than OE LED 3rd brake light
Includes a new rubber gasket to prevent water intrusion*



TCB500
Tail Light Circuit Board
Nissan 2013-12
VIO over 145,000

EXPERT SOLUTION

High-quality direct replacement for failed OE tail light circuit boards.



BLG100
Third Brake Light Gasket
Chevy Tahoe/Suburban 2006-03
GMC Yukon/Yukon XL 2006-03
VIO over 1.4 million

PROBLEM SOLVER
Replace just the dry-rotted gasket to prevent water intrusion



THA103
Thermostat Housing Assembly
Dodge Sprinter 2500 2006-03
Freightliner Sprinter 2500 2006-02
Freightliner Sprinter 3500 2006-02

PROVEN QUALITY

Includes temperature sensor, thermostat, and seal



TPK500
Throttle Position Sensor
Repair Kit
Honda 2001-88

4.5 MILLION VIO



THA700
Thermostat Housing Assembly
BMW 2006-97
VIO over 1 million

PROBLEM SOLVER

*TECH EXPERT aluminum construction replaces weak OE plastic design
Includes temperature sensor, thermostat, and seal*



TPK503
Throttle Position Sensor
Repair Kit
Acura 2006-02
Honda 2001-97
VIO over 630,000

COMPLETE KIT

*Replace just the failed sensor
Includes gasket and mounting hardware*



THA706
Thermostat Housing Assembly
Ford Focus 2.0L 2011-05
Ford Ranger 2.3L 2003-01

1.2 MILLION VIO



TPK504
Throttle Position Sensor
Repair Kit
Acura 2005-02
Honda 2005-02

COMPLETE KIT

*Replace just the failed sensor
Includes gasket and mounting hardware*



THA709
Thermostat Housing Assembly
Mini Cooper 2008-02
VIO over 100,000

COMPLETE KIT

High-quality direct replacement housing includes gasket and thermostat



TPK505
Throttle Position Sensor
Repair Kit
Honda 2005-03
VIO over 1.1 million

COMPLETE KIT

*Replace just the failed sensor
Includes gasket and mounting hardware*



THA726
Thermostat Housing Assembly
Volkswagen Passat 2004-02

PROVEN QUALITY

Includes temperature sensor, thermostat, and seal



TPK506
Throttle Position Sensor
Repair Kit
Honda Civic 1.7L 2005-01

1.4 MILLION VIO

▶ Variable Valve Timing (VVT) Spool Valve Filter

Clogged screens or a weak seal on the gasket can cause issues with a vehicle's VVT system that go beyond just replacing the solenoid. TECH EXPERT is happy to introduce our VVT Spool Valve Filters for Honda applications. Designed as a direct fit, TECH EXPERT's VVT Spool Valve Filter will repair the faulty seal and restore the vehicle to peak performance.

See page 56 for product applications.



NEW



TPK507
Throttle Position Repair Kit
Hyundai 2009-07
Kia 2012-07
VIO over 161,000

COMPLETE KIT

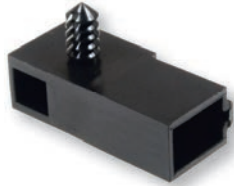
Replace just the failed sensor
Includes gasket and mounting hardware



TTS100
Transmission Oil Temp Sensor
Ford 2010-95
VIO over 3 million

EXPERT SOLUTION

High-quality direct replacement for failed OE part



TTS101
Transmission Oil Temp Sensor
Ford 2010-91

14.7 MILLION VIO



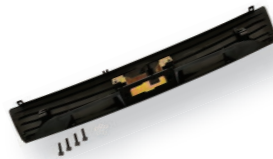
ETC106
Transmission Pressure Switch Assembly
GM 2008-93

23.6 MILLION VIO



ETC107
Transmission Pressure Switch Assembly
GM Trucks 2009-91

17.1 MILLION VIO



RHH500
Trunk Hatch Handle Repair Kit
Scion tC 2010-05
VIO over 280,000

COMPLETE KIT

Includes new ABS plastic handle, reinforced zinc-coated bracket, and mounting hardware replaces OE handles prone to failure

NEW



TRK700
Trunk Latch Actuator Repair Kit
Mercedes-Benz 2006-01

PROBLEM SOLVER

Redesigned to fix OE flaw. Restore lift to the trunk



TDT100
Turbocharger Oil Drain Tube
Ford E-Vans 2010-05
Ford F-Series Pickup 2007-05
VIO over 470,000

PROVEN QUALITY

Zinc coated tube offers greater corrosion resistance than the OE



TBA100
Turbocharger Actuator
Ford Trucks 6.0L 2010-04
VIO over 800,000

PROVEN QUALITY

Replaces damaged or clogged turbocharger actuators on Ford's Variable Geometry Turbocharger (VGT) equipped 6.0L Engines



TBV700
Turbocharger Bypass Valve
Audi/VW 2005-98
VIO over 470,000

PROVEN QUALITY

Stronger "710P" valve with 14.4lb spring for better-than-OE performance



TRB100
Turbocharger Solenoid
GM 1997-95
VIO over 163,000

PROVEN QUALITY

High-quality direct replacement for failed OE part



TBS100
Turbocharger Speed Sensor
Dodge Ram 5.9L & 6.7L 2010-07
VIO over 300,000

PROBLEM SOLVER

High-quality direct replacement for failed Turbocharger Speed Sensors on Dodge Ram 5.9L and 6.7L Diesel Engines



VIA700
Variable Intake Manifold Actuator
Audi/VW w/2.0T 2010-05
VIO over 675,000

PROBLEM SOLVER

Restores drivability and clears P2004 or P2015 "Flapper Sensor Failure" DTCs on 2.0T engines



VIA701
Variable Intake Manifold Actuator
Mazda 3 2009-04
VIO over 235,000

PROBLEM SOLVER

Replace just the failed unit instead of the entire expensive intake manifold assembly on Mazda 3 2.0L engines

▶ Windshield Wiper Linkage

When windshield wiper linkage arms and bushings crack from wear and tear, they can prevent windshield wipers from functioning properly. To help you restore wiper function, TECH EXPERT introduces a new line of Windshield Wiper Linkages for Hyundai and Kia applications. The direct-replacement linkages come as a complete assembly and cover over 6.5 million VIO.

See below for product applications.



VIA702
Variable Intake Manifold
Actuator Repair Kit
Mercedes-Benz 2011-05
VIO over 1 million

COMPLETE KIT

Replaces the damaged OE plastic intake manifold hinge with a metal unit
Includes everything necessary for a complete repair

NEW



VSF500
Variable Valve Timing
(VVT) Spool Valve Filter
Honda 2011-02
Acura 2010-04
VIO over 2 million

PROBLEM SOLVER

Replace the clogged screen filter with an OE quality direct fit replacement

NEW



VSF501
Variable Valve Timing
(VVT) Spool Valve Filter
Honda Odyssey 2009-06
Honda Accord 2012-98
VIO over 1.8 million

PROBLEM SOLVER

Replace the clogged screen filter with an OE quality direct fit replacement

NEW



VSF502
Variable Valve Timing
(VVT) Spool Valve Filter
Honda Civic 2014-06
VIO over 2.3 million

PROBLEM SOLVER

Replace the clogged screen filter with an OE quality direct fit replacement

NEW



HFM101
Vertical Fuel Conditioning
Module
Ford Vans 2007-03

EXPERT SOLUTION

Replaces failed OE unit with proven high quality direct fit assembly

NEW



WWL500
Windshield Wiper Linkage
Hyundai Accent 2000-05
VIO over 1.4 million

EXPERT SOLUTION

Replace failed OE unit and restore visibility in the bad weather

NEW



WWL595
Windshield Wiper Linkage
Hyundai Sonata 2010-06
VIO over 589,000

EXPERT SOLUTION

Replace failed OE unit and restore visibility in the bad weather

Tech Expert™ HID Headlight Ballast

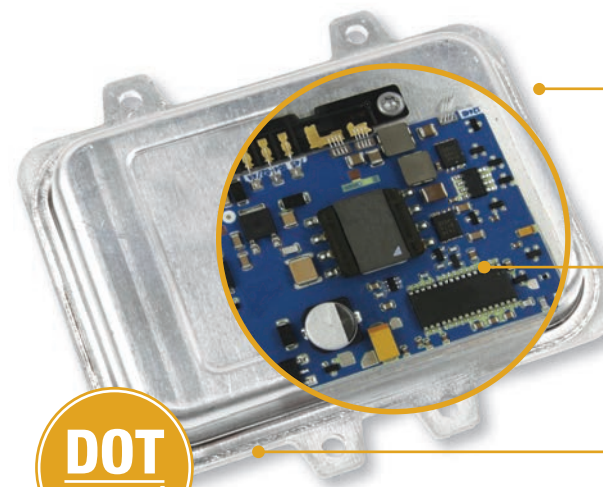


The Problem: Despite their superiority to halogen headlights, HID Headlights can still fail, typically from overheating, moisture intrusion, damage from a frontal collision, or burning out from repeated duty cycles. If one of those scenarios occurs, it can cause the system to become inoperative, creating reduced visibility and safety concerns for motorists.

TECH EXPERT's Response: To help restore proper lighting function to HID light systems, TECH EXPERT® created OE-Exact Match HID Headlight Ballasts. That means they are direct-replacement parts that match the fit, form, and function of the originals. Plus, as DOT-certified parts, our HID Headlight Ballasts comply with Federal Motor Vehicle Safety Standards. manufacturing facility in Orlando, FL, TECH EXPERT's Fuel Injection Control Module (FICM) surpasses its counterparts in quality.

HID100

Cadillac Escalade (2014-07)
Cadillac Escalade ESV (2014-07)
Cadillac Escalade EXT (2013-07)
VIO over 200,000



Heavy-duty casings around electronics ensure durability

Internal circuitry matches OE design to ensure performance

DOT
approved

'Plug & play' design means no need for reprogramming

Tech Expert™ Alternator Decoupler Pulley Components

Overrunning Alternator Pulleys

The Problem: Replacing certain overrunning alternator pulleys requires replacing the entire alternator assembly.

TECH EXPERT's Response: Saving you time and money on a full repair, TECH EXPERT's Overrunning Alternator Pulley (OAP) allow you to replace the damaged part without replacing the entire assembly. Once installed, TECH EXPERT's OAP will reduce stress on the belt drive system, leading to improved performance and a smoother, quieter ride.

- Allows you to replace only failed part instead of entire alternator
- High-quality material ensures performance under any condition



OAP100

Ford Escape (2007-05)
Mazda Tribute (2006-05)
Mercury Mariner (2007-05)
VIO over 107,000

Alternator Decoupler Pulley Tool Kit

With TECH EXPERT's Alternator Decoupler Pulley Tool Kit, you'll have all the tools needed to service the alternator decoupler pulley in one easy-to-find place. With a complete range of 23 different Torx, spline, and hex adaptors that fit most alternators, TECH EXPERT's Alternator Decoupler Pulley Tool Kit is the most complete kit in the market today.

OAP103

Fits most domestic & import applications



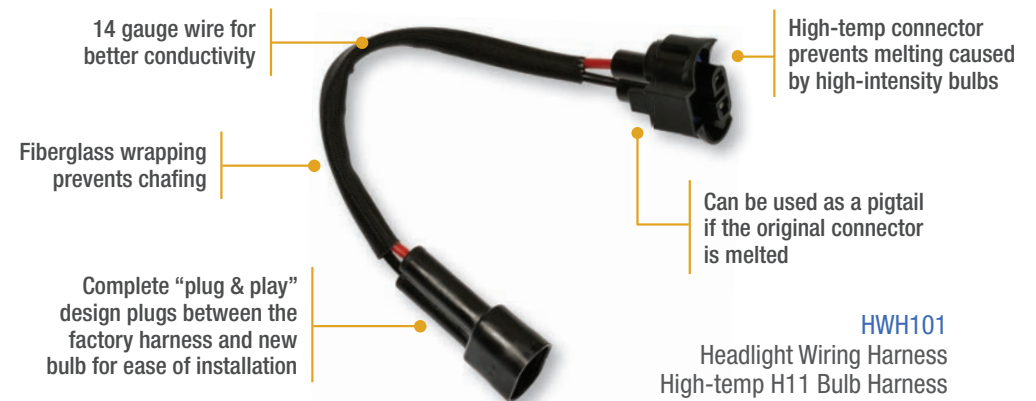
Tech Expert™ Headlight Wiring Harnesses

The Problem: The heat generated by modern OE automotive light bulbs can melt the bulb's connectors.

TECH EXPERT's Response: To prevent melting, TECH EXPERT's Headlight Wiring Harnesses have high-temp connectors that can withstand extreme heat. The harnesses also have 14-gauge wire for better conductivity and a "plug & play" feature that lets you plug the harness right between the factory harness and new bulb. You can even use the harness as a pigtail if the original connector is melted. TECH EXPERT's line of headlight harnesses covers the following high-temp bulbs: H1, H3, H4, H7, H11, 9004, 9005, 9006, 9006XS, and 9007.



Melted Original-style Unit



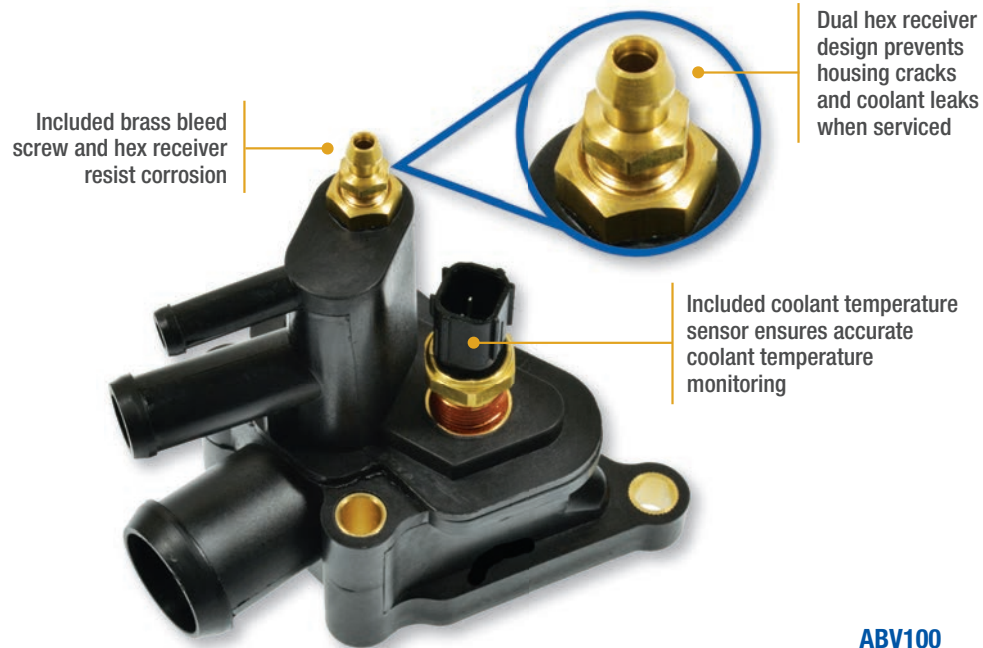
HWH101
Headlight Wiring Harness
High-temp H11 Bulb Harness

Part #	HWH100	HWH101	HWH102	HWH103	HWH104	HWH105	HWH106	HWH107
Bulb #	H7	H11	H7	9005	9006	9004 & 9007	9003 & H4	H1 & H3

Tech Expert™ Engine Coolant Air Bleeder Valves

The Problem: Because air-coolant bleeders are located on top of Chrysler 2.7L engines, they are exposed to hot and cold conditions. The constant change in temperature can have a domino effect of problems. First, the housing can weaken, causing the bleed screw to stick. Then, the excess force needed to remove the stubborn bleed screw can crack the housing, which can lead to coolant leaks.

TECH EXPERT's Response: To make it easier for you to remove the bleed screw, our engineers added an extra hex receiver to the bleed screw base of our Engine Coolant Air Bleeder Valve. Now, you can hold the bleed valve in place with one wrench while turning the bleed screw with another. With less stress, there's less chance of cracking the housing. Even better, TECH EXPERT® pairs the housing with a new coolant temperature sensor and gaskets, so you'll have everything you need for a complete replacement.



ABV100
Chrysler Sebring 2.7L (2006-01)
Dodge Stratus 2.7L (2006-01)
VIO over 450,000

Tech Expert™ Hybrid Drive Cooling Pump

The Problem: The hybrid drive cooling pump cools the drive system on today's hybrid vehicles. When the pump fails, it can cause the transaxle to overheat.

TECH EXPERT's Response: Giving you a high-quality solution for these repairs, TECH EXPERT® introduced a Hybrid Drive Cooling Pump that restores proper coolant flow to reduce operating temperatures of the hybrid drive transaxle.



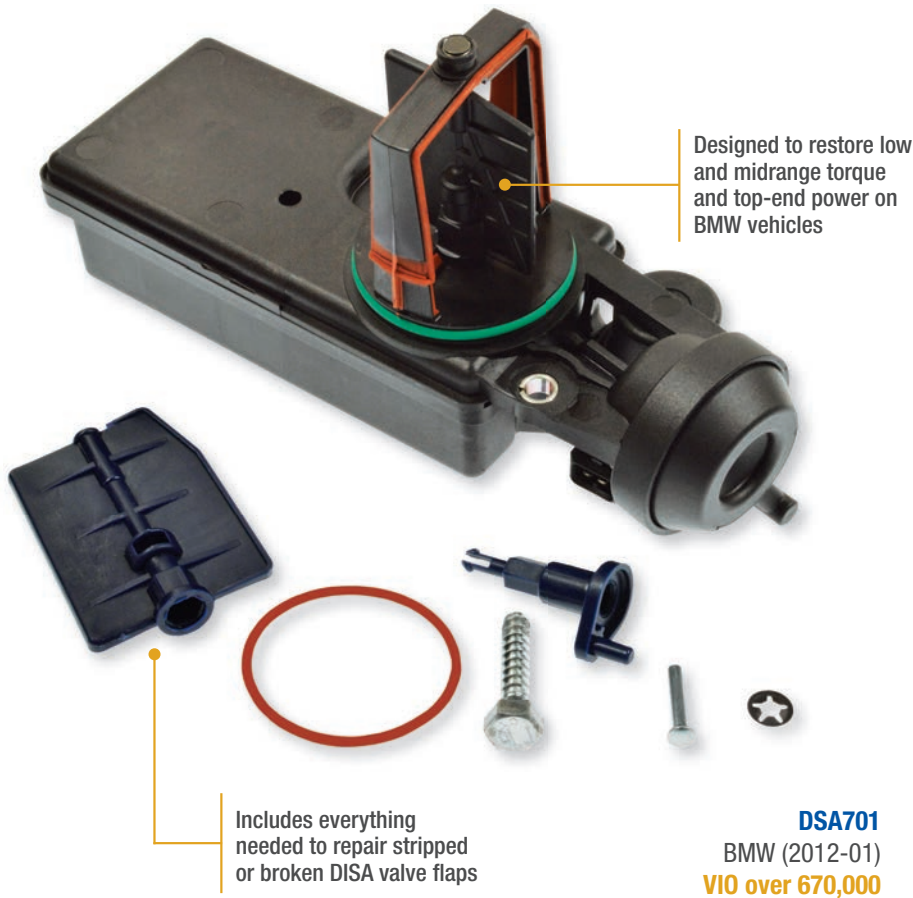
HCP100
Ford Escape (2008-05)
Mercury Mariner (2008-06)

Tech Tip: To avoid premature pump failure, be sure to always change the coolant at the manufacturer suggested intervals.

Tech Expert™ DISA Valve Repair Kits

The Problem: The DISA valve flap can become stripped over time. When that happens, the vehicle may idle roughly, lose power, or display a diagnostic trouble code. Repair requires replacing the entire assembly.

TECH EXPERT's Response: Saving you time and money, TECH EXPERT's DISA Valve Repair Kits include everything you need to replace only the valve: new flap, flap hinge, hinge pin, retaining clip, O-ring, and extractor screw.



Disclaimer: Kit only, actuator not included.

Tech Expert™ Throttle Position Sensor Repair Kits

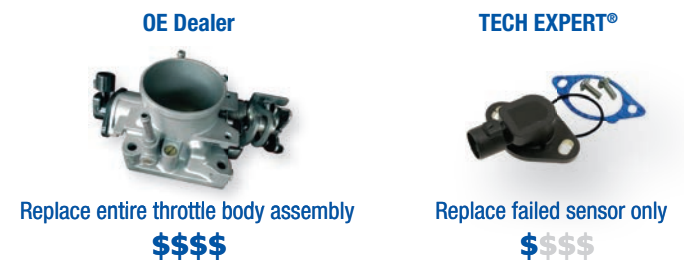
The Problem: On certain Honda and Acura applications, the throttle position sensor cannot be serviced separately through the dealer. Instead, the entire throttle body assembly needs to be replaced, which is an expensive, time-consuming repair.

TECH EXPERT's Response: To provide an alternative for the entire throttle body assembly replacement, TECH EXPERT's line of Throttle Position Sensor Repair Kits comes complete with everything needed to replace only the failed sensor. Each kit includes an OE-Exact Match Throttle Position Sensor, a gasket, and all the necessary mounting hardware.



Tech Tip: Once you remove the old rivets and install the new sensor using the included hardware, simply follow the OE service manual's TPS calibration procedure.

Repair options when only TPS fails on certain Honda/Acura applications



TECH EXPERT™

Park Assist Sensors

The Problem: Park assist sensors are common failure parts, because they can be easily damaged in crashes and by water intrusion.

TECH EXPERT's Response: To give you a better match, TECH EXPERT's line of Park Assist Sensors was designed to replicate the OE body style. As a result, you'll have a part that fits and functions just like the original.

Advanced ultrasonic technology matches object detection range of OE units, ensuring driver is alerted of objects within vehicle's path

Matches OE design 1 to 1, ensuring direct-fit replacement and ease of installation

Designed to match OE units in fit, form, and function for peak performance



PAS100
Ford/Lincoln/Mercury (11-01)
VIO over 8.9 Million



PAS701
BMW 2008-02
VIO over 660,000



PAS710
Mercedes-Benz 2012-98
VIO over 1.6 Million



PAS500
Toyota 2011-07
VIO over 170,000



TECH EXPERT™ by NAPA® Echlin®
37-18 Northern Boulevard, Long Island City, NY 11101
©2016 TECH EXPERT™

Expert Solutions for Professional Technicians™



TE11300