

TIRE PRESSURE MONITORING SYSTEMS (TPMS)

1

OE-Match pre-programmed TPMS Sensors are ready-to-install right out of the box

2

QWIK-SENSOR® Multi-Frequency TPMS Sensors combine 314.9MHz - 434MHz applications into one single Sensor program that is compatible with most popular existing tools

3

We also offer multiple TPMS service kits and programming tools

What's in your box?™
Here's what's in ours.



ECHLIN

LOOKS RIGHT. FITS RIGHT. PERFORMS RIGHT.

NAPAEchlin.com

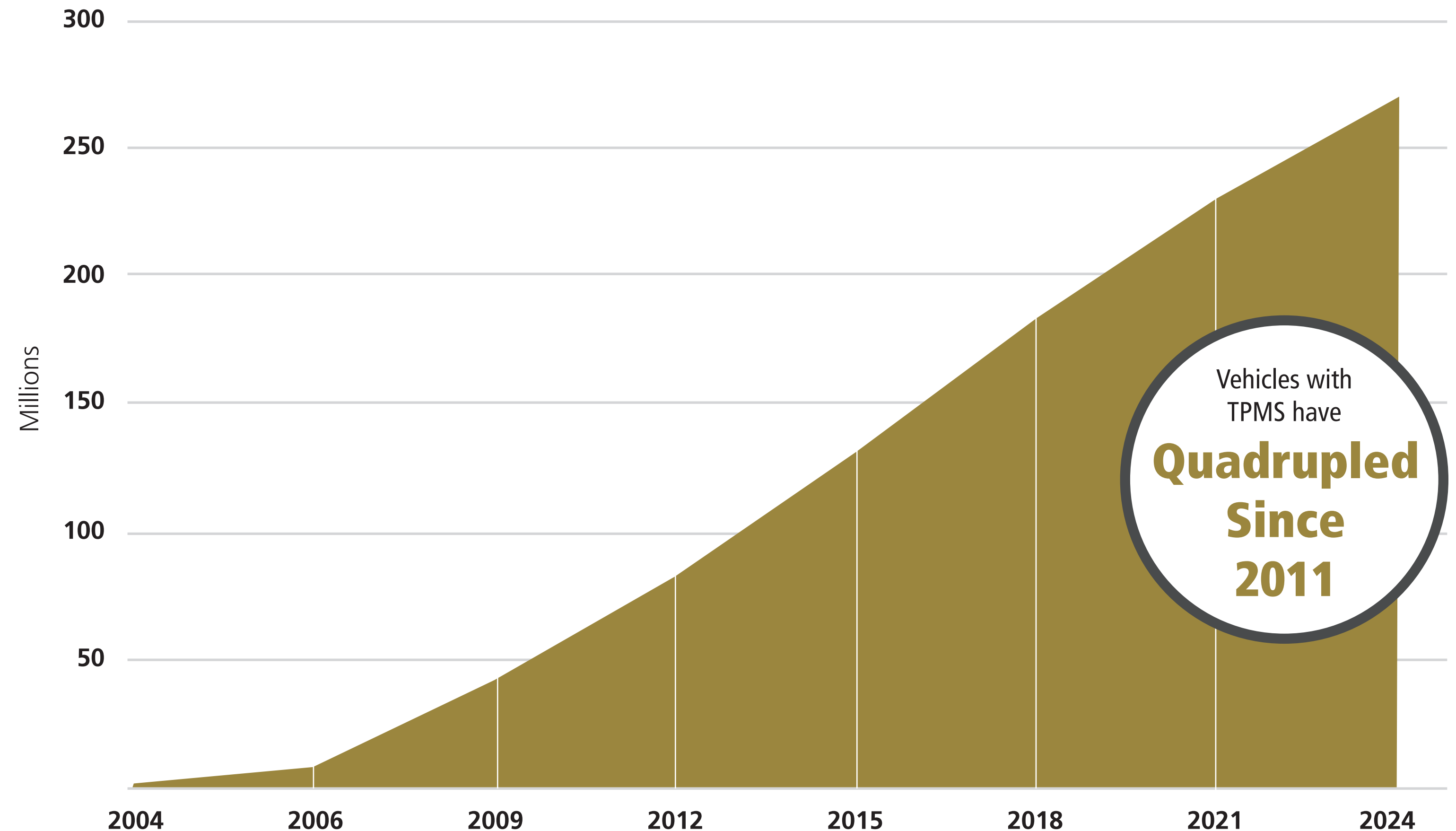
Growing Market

Since the introduction of tire pressure monitoring systems, the number of vehicles on the road with this technology has grown rapidly. Many vehicles equipped with TPMS sensors are still relatively new, meaning they have yet to have their sensors replaced. TPMS sensor sales will see continued growth as these vehicles age.

Did You Know

The 1986 Porsche 959 was the first production car to utilize a TPMS system.

Vehicles on the Road with TPMS Systems



Source: SMP Internal Data

More than 250 million TPMS vehicles on the road means there are over 1 billion TPMS service opportunities!

Opportunities

TPMS sensors contain a sealed battery and have a useful life of 5-12 years. Like any battery, extreme heat and cold can shorten the life expectancy of batteries in TPMS sensors. When the first TPMS sensor fails, experts recommend replacing the other three since they are the same age, and have been subjected to the exact same conditions.



Recommending TPMS Sensors

- 1 Ask your customer: ***"Do you know why your TPMS Sensor failed?"***
(It is important for your customers to think about **WHY** the part has failed)
- 2 Explain that they contain a sealed battery that can't be replaced
- 3 Then say: ***"Since the batteries in the other sensors are the same age, they are likely to begin failing in succession, especially the next time it gets very hot."***
- 4 Lastly say: ***"Most of our customers find it helpful if we install new sensors at the same time. Can we install the other three for you?"***



Impact on Vehicle Systems



On some vehicles, speed may be limited and transmission shifting and throttle openings may use a safety strategy mode if a low tire pressure is detected or a faulty TPMS sensor is detected



Underinflated tires can reduce rolling efficiency and cost a motorist over \$200 more in fuel per year



Some vehicles require that the spare tire also be included in the relearn process – Ensure that it is properly inflated and that proper relearn procedures are followed

What's New

QWIK-SENSOR® Multipacks

All-new QWIK-SENSOR® TPMS Multipacks of 25 are now available with rubber or metal valve stems. These Kits include 25 individually packaged and protected QWIK-SENSOR® multi-frequency TPMS Sensors — the perfect solution for shops that are interested in saving time by having sensors on-hand.

QWIK®
sensor

MULTI-FREQUENCY

Programmable TPMS Sensors

QWIK-SENSOR® Multipacks



x25

TPMK28

Includes 25 of the 92-4006R
Multi-Frequency QWIK-SENSORS®
with rubber valve stems



x25

TPMK29

Includes 25 of the 92-4006M
Multi-Frequency QWIK-SENSORS®
with metal valve stems

NOW AVAILABLE IN MULTIPACKS OF 25

- For use on import and domestic applications
- Available with rubber or metal valve stems
- Individually packaged and protected sensors



Top Movers: TPMS Sensors

**QWIK[®]
sensor**
MULTI-FREQUENCY
Programmable TPMS Sensors



92-4006M
Multi-Frequency Universal
Metal Valve Stem



92-4006R
Multi-Frequency Universal
Rubber Valve Stem



**OE-Match
TPMS
SENSORS**



92-1021RC
GM
Cars, Trucks & SUVs
(2020-04)



92-1187C
Lexus / Toyota
Cars, Trucks & SUVs
(2017-03)



92-1179RC
Ford / Lincoln
Cars, Trucks & SUVs
(2023-09)



92-1168C
Honda / Acura
Cars & SUVs
(2017-08)



92-1227
Ford
Cars, Trucks & SUVs
(2023-15)

Manufacturing

Echlin® TPMS Sensors are designed and manufactured using the latest technology to meet OE performance in compliance with all SAE2657 specifications.

Every Sensor is precision engineered for application-specific operation and a long service life.



Did You Know

Our facility produces more than a million Sensors annually, earning international and national certifications including U.S. FCC, European E-Mark, Canada IC, and Taiwan NCC while meeting FMVSS138, SAE J2657, ISO9001, and IATF 16949 quality standards.

Testing and Validation

Each Echlin® TPMS Sensor undergoes extensive testing to ensure performance and durability.

We subject our Sensors to SAEJ2657 certification standards including operational temperature, thermal shock, extreme temperature, humidity, frost, proof pressure, rapid deflation, contamination, salt fog, drop, centrifugal force vehicle speed, and mechanical vibration testing.

Did You Know

Our results are validated by live 168-hour on-vehicle testing at independent labs.

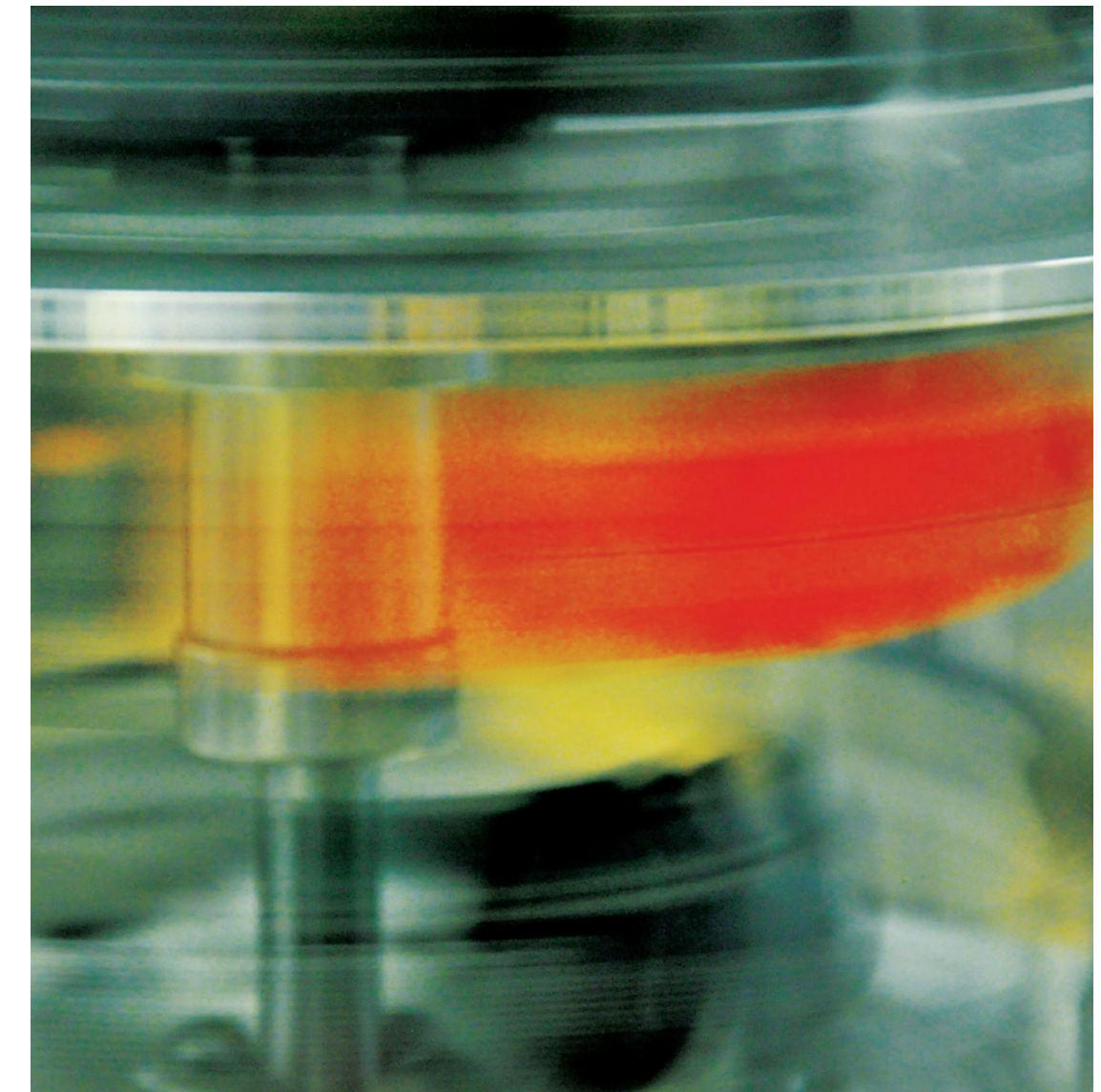
Echlin® TPMS Accelerated Life Test

During normal usage, TPMS sensors are only active for a few hours per day.

To make sure our sensor batteries last, we subject them to an Accelerated Life Test.



First, we load the TPMS Sensors in the testing chamber.



Next, we run the test 24 hours a day, 7 days a week.

The result is that we ensure that our TPMS sensor battery lasts, keeping this important safety feature running.

Echlin® Quality

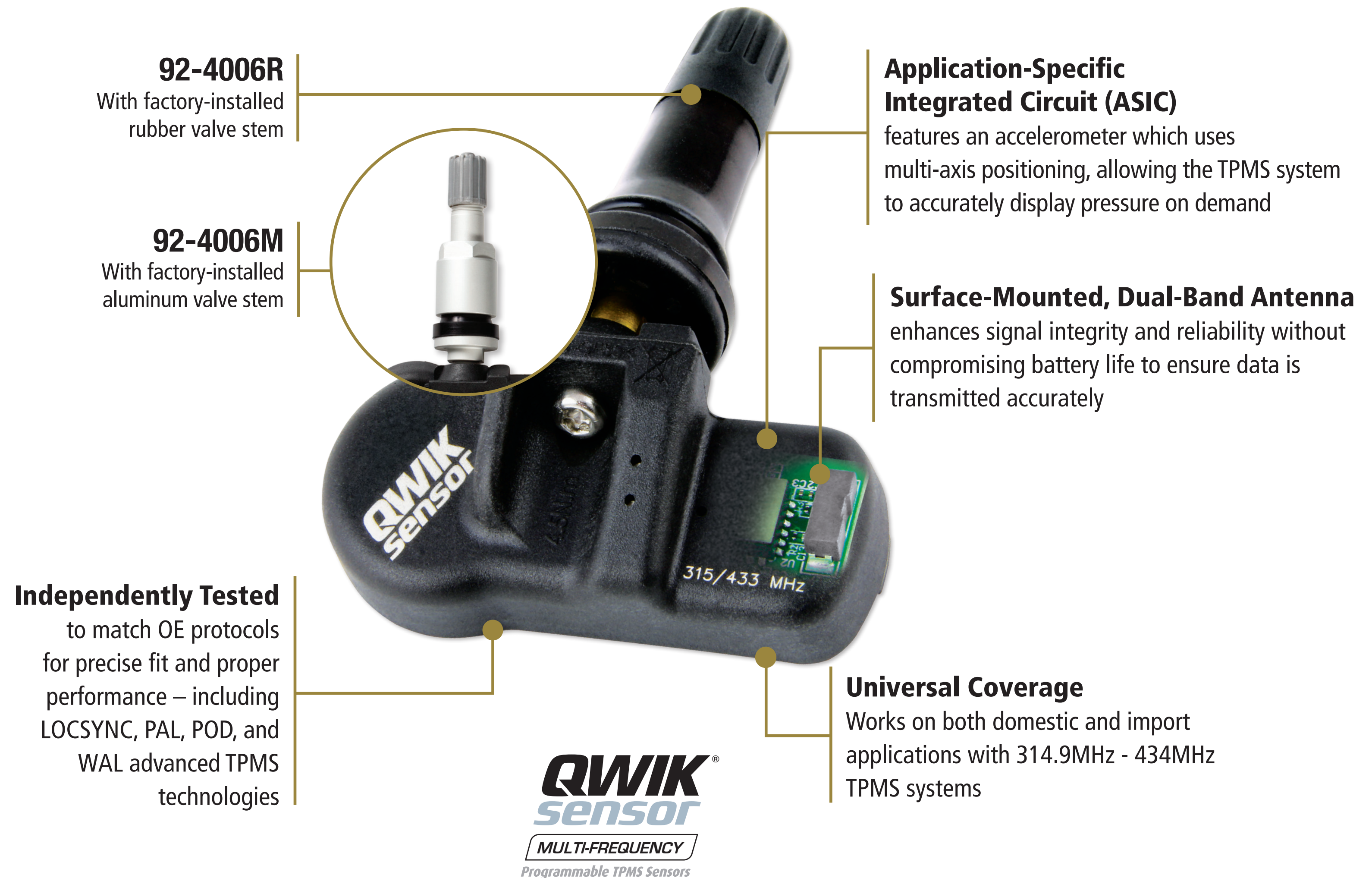
QWIK-SENSOR® Multi-Frequency TPMS Sensors combine all frequencies into a single sensor, eliminating duplication of inventory. Available with a factory-installed rubber or metal valve stem.

Faster programming times and longer battery life are enhancements engineered into the 92-4006R.

Did You Know

The required sensor programming can be completed before or after installation, and while under pressure.

One Single Sensor is All You Need.



Echlin® Quality

Echlin® OE-Match TPMS Sensors are available for popular import and domestic vehicles. For a complete listing of available sensors visit NAPAEchlin.com.

Did You Know

Some manufacturers use ABS wheel speed sensors to detect tire inflation changes - so check out Echlin's ABS Sensor program.

OE-Match, Ready-to-Install Right Out of the Box.



ECHLIN®

OE-Match
TPMS
SENSORS



ECHLIN®

TPMS Sensors

NAPAEchlin.com

Compatible Sensors

In addition to our TPMS Tools, QWIK-SENSORS are compatible with many other popular TPMS programming tools.

Though we offer a comprehensive tool program, we understand that techs may already own a tool, which is why we design our Sensors to be compatible with many of the tools on the market today.

QWIK-SENSOR® Compatible Tools

ATEQ VT36

ATEQ VT37

ATEQ VT47

ATEQ VT56

ATEQ VT57

ATEQ VT67

BOSCH TPA 300

Bridgestone 56

Continental Autodiagnos
TPMS D

HUF DT56

Launch TECH USA TSAP-2

Launch TECH USA TSAP-3

MAC ET3450

Matco MAXTPMS2.0

Matco MAXTPMS3.0

Matco MD56

Monro S56

NAPA® Echlin® 92-1541

NAPA® Echlin® 92-1547

NAPA® Echlin® 92-1548

NAPA® Echlin® 92-1551

NAPA® Echlin® 92-1557

QWIK-SENSOR® T46000

QWIK-SENSOR® T47000

QWIK-SENSOR® T48000

QWIK-SENSOR® T56000

QWIK-SENSOR® T57000

Schrader S56

Schrader S57

Snap-On TPMS3

Snap-On TPMS4

Snap-On TPMS5

Top Don TP-47

Top Don TP-48

VDO TPMS Go

VDO TPMS Pro



Service Tools

In addition to the industry's strongest blended TPMS program, Echlin® offers the right tools to program and service today's TPMS systems.

Did You Know

Echlin's 92-1557 Tool includes Live Sensor technology which enables the Echlin® team to provide over-the-air updates for late-model vehicles.



92-1557

- Programs universal and multi-coverage sensors
- Integrated VIN scanner ensures application accuracy
- Built-in TPMS relearn procedures speed-up repair process
- Hi-res color touchscreen displays all sensor info
- Reads and displays TPMS Diagnostic Trouble Codes (DTC)



92-1548

- Works with all OE-Match and QWIK-SENSOR® TPMS Sensors, and other popular universal sensors
- Comprehensive make/model/year-specific relearn procedures
- Built-in OBD module with quick-connect cable and simple OBDII transfers – no additional accessories needed



92-1547

- Comprehensive make/model/year-specific relearn procedures speed up the repair process
- Built-in OBD module with quick-connect cable allows for easy OBDII transfers
- Works with Echlin® OE-Match and QWIK-SENSOR® TPMS Sensors

Related Parts

In addition to QWIK-SENSORS and our OE-Match Sensor line, Echlin® also provides technicians with all necessary TPMS service items such as individual, application-specific service kits plus bulk packs of valve stems, cores, and more.

We also offer TPMS Service and Valve Kit Assortments, providing technicians with the most popular components for a complete repair solution.



OE-Design TPMS Sensor Service Kits

Application-specific, these kits typically include a valve core, seal, washer, retaining nut, and cap

50+ SKUs available



Tire Pressure Monitoring Valve Cores

Electroless nickel-plated construction

Sold in packs of 100



QWIK-SENSOR® TPMS Sensor Service Kits

Specifically designed for our multi-frequency Sensor, these kits include all necessary service components



Valve Caps

Available in black or grey

Sold in packs of 100



TPMS Valves

49 SKUs available for QWIK-SENSOR® and OE-Match Sensors

Bolt-on installation



TPMS Sensor Cradle

Bracket to mount TPMS Sensor on Ford / Lincoln / Mercury wheels up to 2011

Echlin® Solutions

Every time a tire is removed from the wheel, the TPMS service parts such as valve stems, seals, nuts, washers, valve cores, and caps should be replaced, as these parts are all exposed to extreme weather, corrosion, and aging.

Echlin® Pro Training Tip

A relearn should also be done each time tires are reinstalled to ensure that the proper tire location is detected. A printout or uploaded file after the relearn has been completed will show the customer that the work has been completed properly.

TPMS Service Kits



92-1401SK
Service Kit Assortment



92-1402VK
Valve Kit Assortment



92-9020
Tire Pressure Monitoring
System Tool

Echlin® TPMS Service Kit Assortments and Tool Kits

TPMS Service Kit Assortments from Echlin® include the most popular service and valve kits, including valve stem rebuild kits, nickel-plated valve cores, valve caps, and valve core torque tools. Echlin® also offers TPMS Tool Kits like 92-9020 for an easy TPMS service.

Echlin® Professional Training

Award-Winning In-Person, Live Virtual, and Online Learning

Echlin® Pro Training delivers accredited classes that educate technicians in the latest automotive repair technologies, and techs can earn CEU credits.

An extension of Echlin® training, our extensive YouTube video library has over 550 technical and installation videos.



Available Classes

Sensor Diagnostics

TPMS Diagnosis and Learning

TPMS Fundamentals



Available Classes

Body Control Electronics Diagnosis

Electronic Chassis Control
Diagnosis and Repair

Unleash the Power of Your
Scan Tool



For information on replacing TPMS and related components, search “TPMS” on the **NAPA® Echlin®** YouTube channel