

## TIRE PRESSURE MONITORING SYSTEM (TPMS)

# Highlights

1

New QWIK-SENSOR TPMS Single Sensor Program – in rubber or metal stem

2

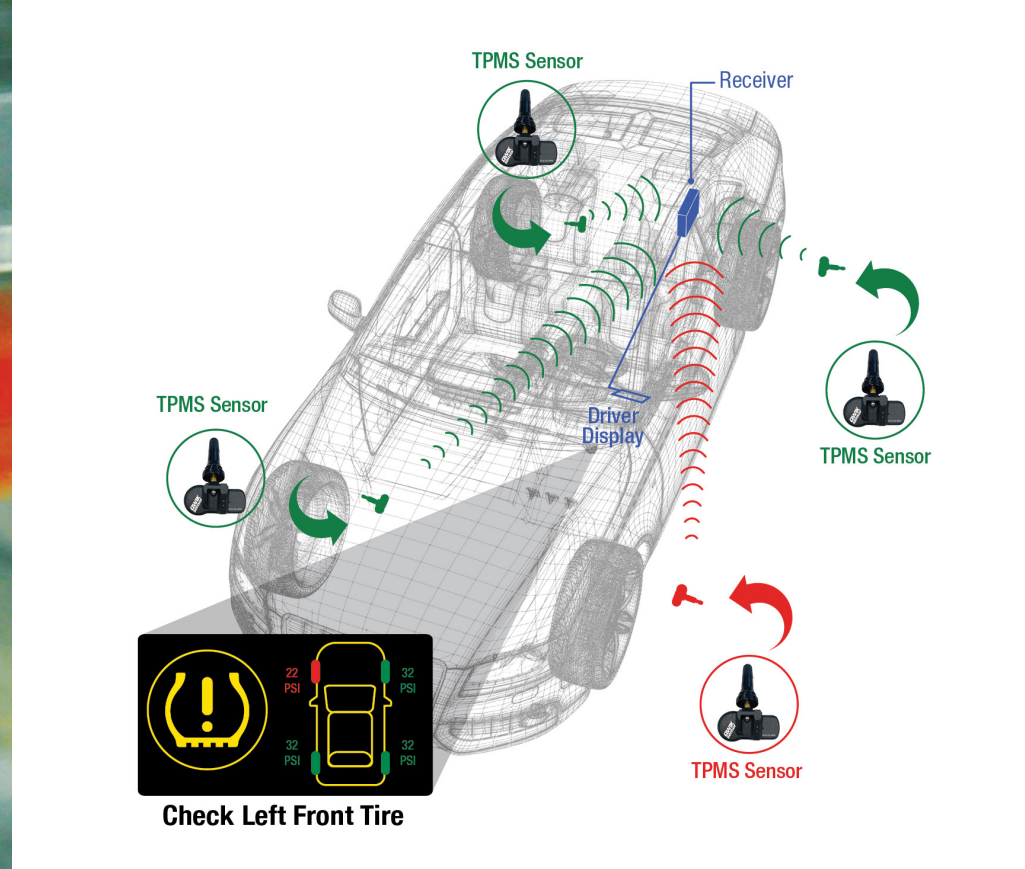
Full line of OE-Match pre-programmed sensors are ready-to-install right of the box

3

Our blended program offers 99% coverage plus a full line of service kits & TPMS tools



## What's in your box?

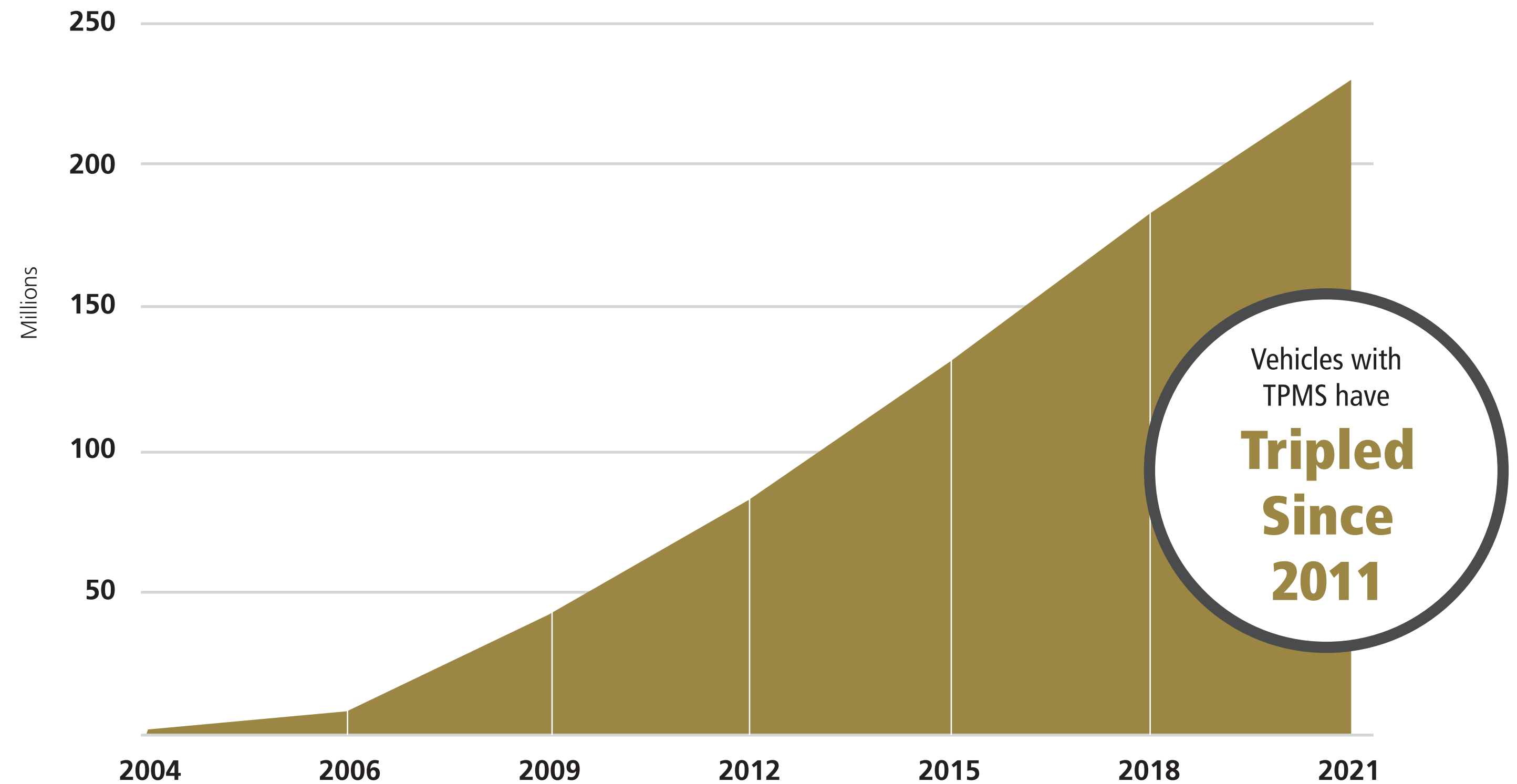


## TPMS

# Growing Market

Tire Pressure Monitoring Systems (TPMS) have been appearing on vehicles for more than 20 years, and in 2008 it became mandatory that all new light vehicles sold in the U.S. have this important safety system.

## Vehicles on the Road with TPMS Systems



Source: SMP Internal Data

## Did You Know

TPMS Sensors generally last 5-10 years as batteries fail. From 2012 to 2016, 82M TPMS-equipped vehicles were added to the road – that represents 328M replacement opportunities (even more if you service the spare).

## TPMS SENSORS

# Sales Opportunities

TPMS Sensors are sealed units powered by batteries, with the typical lifespan of these batteries being 5-10 years. When new tires are being installed, reusing old sensors doesn't make sense, as they're susceptible to failure.

### **NAPA® Echlin® Training Tip**

Canned tire sealants can cause immediate damage to TPMS sensors. If any type of sealant has been used, a new TPMS sensor should be installed.

**When it's time for the third set of tires, it's time for new TPMS Sensors.**



### **Original Set of Tires**

On the vehicle from 0 to 35,000-50,000 miles or around 4-5 years



### **Second Set of Tires**

On the vehicle until the odometer reads 75,000-100,000 miles or the vehicle has been on the road 8-10 years



### **Third Set of Tires**

Typically installed on an 8-10 year old vehicle, when the TPMS Sensors are nearing the end of their service life

**Change the TPMS Sensors!**

## TPMS SENSORS

# Impact on Engine Systems



Low air in a tire can lead to safety issues like the risk of hydroplaning and diminished braking performance



Underinflated tires can cost a motorist more than \$200 more in fuel per year



A sensor relearn procedure should be performed on any vehicle with TPMS after every tire rotation or replacement

**NAPA® ECHLIN® OE-MATCH  
TPMS SENSORS**

# What's New

TPMS Sensors have now become common vehicle safety equipment. NAPA® Echlin® is committed to regularly introducing new TPMS sensors to cover new applications.

For the most recent applications, check the online catalog at [NAPAEchlin.com](http://NAPAEchlin.com)



**92-1407**  
**Ford/Lincoln SUVs**  
**(2022-20)**  
**VIO: 921K**



**92-1424**  
**Lexus/Toyota Cars & SUVs**  
**(2022-20)**  
**VIO: 1.6M**



**92-1336**  
**Nissan Sentra/Versa Note**  
**(2019-16)**  
**VIO: 736K**



NAPA® ECHLIN® TPMS SENSORS

# Top Movers



**92-4006M**  
Multi-Frequency Universal  
Metal Valve Stem



**92-4006R**  
Multi-Frequency Universal  
Rubber Valve Stem



**92-1021RC**  
GM  
Cars & Trucks  
(2021-04)



**92-1187C**  
Lexus/Toyota  
Cars & Trucks  
(2019-03)



**92-1225RC**  
Chrysler/Dodge/Jeep  
Cars & Trucks  
(2021-10)



**92-1232C**  
Jeep/Ram  
Trucks & SUVs  
(2021-14)



**92-1227**  
Ford  
Trucks & SUVs  
(2022-15)

**QWIK**  
**sensor**  
MULTI-FREQUENCY  
Programmable TPMS Sensors

**NAPA** **ECHLIN**  
OE-Match  
**TPMS**  
SENSORS

**NAPA® ECHLIN® TPMS SENSORS**

# Manufacturing

NAPA® Echlin® TPMS Sensors are designed and manufactured using the latest technology to meet the OE performance in compliance with all SAE2657 specifications.

Every sensor is precision engineered for application-specific operation and and a long service life.



## Did You Know

Our facility produces more than a million sensors annually, earning international and national certifications including U.S. FCC, European E-Mark, Canada IC, and Taiwan NCC while meeting FMVSS138, SAE J2657, ISO9001, and IATF 16949 quality standards.

**NAPA® ECHLIN® TPMS SENSORS**

# Testing and Validation

Each NAPA® Echlin® TPMS Sensor undergoes extensive testing to ensure performance and durability.

We subject our sensors to SAEJ2657 certification standards including operational temperature, thermal shock, extreme temperature, humidity, frost, proof pressure, rapid deflation, contamination, salt fog, drop, centrifugal force vehicle speed, and mechanical vibration testing.

## Did You Know

Our results are validated with live 168-hour on-vehicle testing at independent labs.

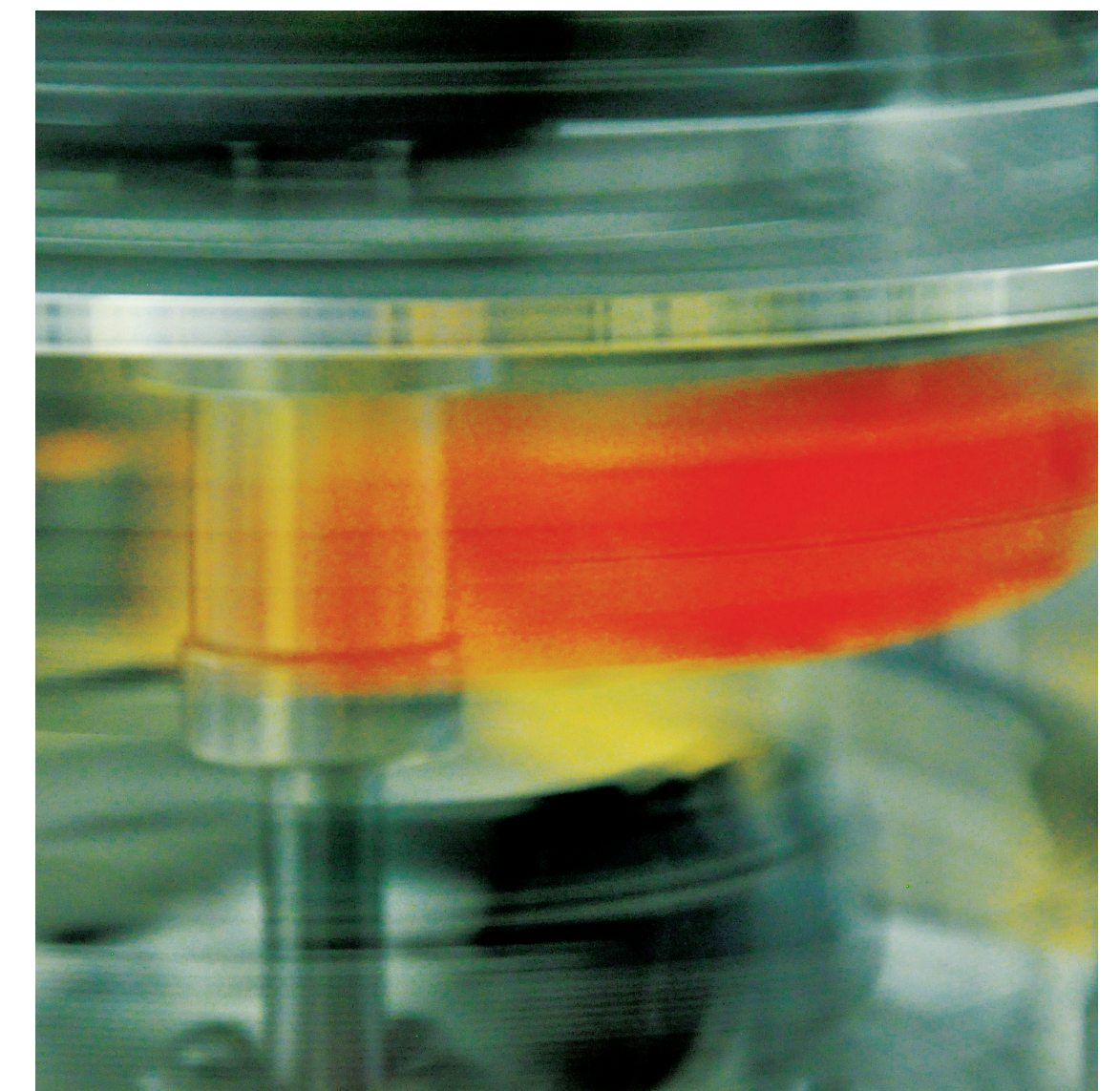
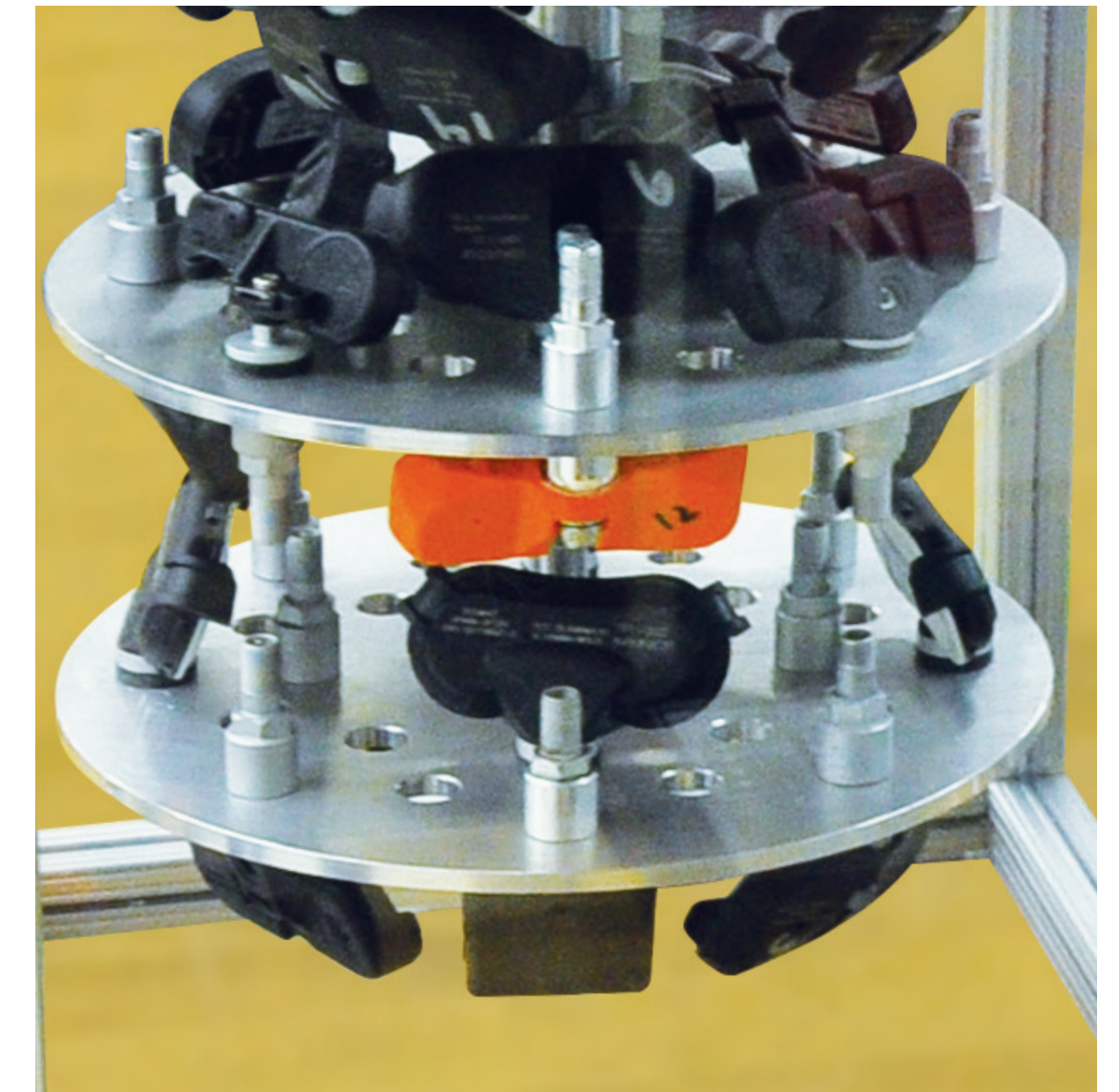
## NAPA® Echlin® TPMS Accelerated Life Test

During normal usage, TPMS sensors are only active for a few hours per day. To make sure our sensor batteries last, we subject them to an Accelerated Life Test.

First, we load the TPMS sensors in the testing chamber.

Next, we run the test for 24 hours a day, 7 days a week.

The result is a TPMS sensor battery that lasts, which keeps this important safety feature running.



**QWIK-SENSOR® TPMS  
SENSORS**

# NAPA® Echlin® Quality

QWIK-SENSOR® Multi-Frequency TPMS

Sensor combines all frequencies into a single sensor, eliminating duplication of inventory. Available with a factory-installed rubber or metal valve stem.

Faster programming times and longer battery life are enhancements engineered into the NEW 92-4006 series QWIK-SENSOR® Programmable TPMS Sensors.

## Did You Know

The required sensor programming can be completed before or after installation, and while under pressure.

**One Single Sensor is All You Need.**



**NAPA® ECHLIN® OE-MATCH  
TPMS SENSORS**

# NAPA® Echlin® Quality

With more than 220 SKUs, NAPA® Echlin® OE-Matching TPMS Sensors provide 99% coverage – the best in the industry.

Pre-programmed from the factory with exact vehicle-specific OE application software, NAPA® Echlin® TPMS Sensors can be directly installed.

These sensors are compatible with OE valve stem rebuild kits and work with all major OE and aftermarket TPMS tools.

**OE-Match, Ready-to-Install Right Out of the Box.**

Military-grade lithium battery ensures maximum battery life and sensor performance

**92-1021RC**  
GM (2020-04)

Pre-programmed at the factory with exact OE protocol, so it's ready to install out of the box

Direct-fit replacement matches the original for fit, form, and function



## NAPA® ECHLIN® TPMS PROGRAM

# Service Tools

In addition to the industry's strongest blended TPMS program, NAPA® Echlin® offers the right tools to program and service today's TPMS systems.

### Did You Know

NAPA® Echlin® offers promotional TPMS Programing Tool Kit bundles that include our latest tools and advanced QWIK-SENSORS. Ask your NAPA® Echlin® Rep for more information.



### 92-1548

Programs popular universal and multi-coverage sensors

States the same information as last bullet point in more detail

Built-in OBD module for quick-connect cable and simple OBDII transfers – no additional accessories needed

Built-in TPMS relearn procedures speed-up the repair process



### 92-1557

Hi-res color touch screen displays all sensor info on one screen

Programs popular universal and multi-coverage sensors

Integrated VIN scanner ensures application accuracy

Built-in TPMS relearn procedures speed-up the repair process

Reads and displays TPMS Diagnostic Trouble Codes (DTC)

# Live Sensor Feature

Live Sensor Technology enables the NAPA® Echlin® team to update software as needed. Updates can be rolled out the same day, in as little as a few hours.

For example, a tech needed to program a sensor for a 2021 Toyota CH-R. This application was originally missing from the tool, but after a short review our team was able to add the coverage, and the technician was able to program the sensor that same day.

October 1, 2021

921557

ABOUT

Serial number : 8366-48218

Boot version : 01.120

Software version : DR1-39-03

Database version : RA1-77-09

Release version : SR1-77-03

Hardware version : 560.25.C

Licence validity : 06/06/2022

Last update : 09/30/2021

Copyright 2020 ATEQ

Tx

Fail

Pass

NOW WITH LIVE SENSOR  
DATABASE UPDATES

DATABASE VERSION:

: RA1-77-09

: RA1-77-11

QWIK  
sensor

QUICK  
SENSOR

October 15, 2021

921557

ABOUT

Serial number : 8366-48152

Boot version : 01.120

Software version : DR1-39-04

Database version : RA1-77-11

Release version : SR1-77-03

Hardware version : 560.25.C

Licence validity : 02/15/2022

Last update : 10/14/2021

Copyright 2020 ATEQ

Tx

Fail

Pass

1

SELECT PROGRAMMABLE SENSORS

ASure SENSOR

Alligator Sens.it

Alpha SENSOR

BH SENS IntelliSens

BND/STD - OE/QMIX

DIALYN SELECT SENSOR

DILL 5001/5002

Direct Fit

Duralast

Dynamic DVT Sensor

ECH/NAPA - OE/QMIX

EZ-Sensor Schrader

EZPROIT

Flex-Sens

Gussin

MAX T.O.T.AL

2

SELECT PROGRAMMABLE SENSORS

ECH / NAPA OE-Design

ECH / NAPA QMIX

3

VEHICLE SELECTION

SUBARU

SUZUKI MOTOR

TESLA

TOYOTA

VOLKSWAGEN

VOLVO

VPG

4

TOYOTA

4 Runner

86

Avalon

Camry

C-HR

Corolla

FJ Cruiser

Highlander

Land Cruiser

Matrix

Mirai

Prius

Prius C

Prius V

RAV4

Sequoia

Sienna

Solara

Tacoma

Tundra

Venza

Yaris

5

TOYOTA/C-HR

2017

2018

2019

2019 is Latest one in this Older Database

SELECT YEAR TO BE SERVICED, PRESS OK

VIN

6

TOYOTA/C-HR/2019

Use 92-4003(Green), 92-4005(315)

PRESS OK TO CONTINUE

NEW

1

SELECT PROGRAMMABLE SENSORS

ASure SENSOR

Alligator Sens.it

Alpha SENSOR

BH SENS IntelliSens

BND/STD - OE/QMIX

DIALYN SELECT SENSOR

DILL 5001/5002

Direct Fit

Duralast

Dynamic DVT Sensor

ECH/NAPA - OE/QMIX

EZ-Sensor Schrader

EZPROIT

Flex-Sens

Gussin

MAX T.O.T.AL

2

SELECT PROGRAMMABLE SENSORS

ECH / NAPA OE-Design

ECH / NAPA QMIX

3

VEHICLE SELECTION

SUBARU

SUZUKI MOTOR

TESLA

TOYOTA

VOLKSWAGEN

VOLVO

VPG

4

TOYOTA

4 Runner

86

Avalon

Camry

C-HR

Corolla

FJ Cruiser

Highlander

Land Cruiser

Matrix

Mirai

Prius

Prius C

Prius V

RAV4

Sequoia

Sienna

Solara

Tacoma

Tundra

Venza

Yaris

5

TOYOTA/C-HR

2017

2018

2019

2020

2021

After LIVE UPDATE

2020-21 are Now in this Database

SELECT YEAR TO BE SERVICED, PRESS OK

VIN

6

TOYOTA/C-HR/2021

Use 92-4006

PRESS OK TO CONTINUE

**NAPA® ECHLIN® TPMS SENSORS**

# Related Parts

In addition to QWIK-SENSORS and our OE-Match Sensor line, NAPA® Echlin® also provides technicians with all necessary TPMS service items – individual, application-specific service kits plus bulk packs of valve stems, cores, and more.

We also offer TPMS Service and Valve Kit Assortments, providing technicians with the most popular components for a complete repair solution.



## OE-Design TPMS Sensor Service Kits

Application-specific, these kits typically include a valve core, seal, washer, retaining nut, and cap

50+ SKUs available



## Tire Pressure Monitoring Valve Cores

Electroless nickel-plated construction

Sold in packs of 100



## QWIK-SENSOR® TPMS Sensor Service Kits

Specifically designed for our multi-frequency sensor, kit includes all necessary service components



## Valve Caps

Available in black or grey

Sold in packs of 100



## TPMS Valves

68 SKUs available for QWIK-SENSOR and OE-Design Sensors

Bolt-on installation



## TPMS Sensor Cradle

Bracket to mount TPMS Sensor on Ford/Lincoln/Mercury wheels up to 2011

NAPA® ECHLIN® TPMS SENSORS

# NAPA® Echlin® Training Tech Tip

Every time a tire is removed from the wheel, the TPMS service parts such as valve stems, seals, nuts, washers, valve cores, and caps should be replaced, as these parts are all exposed to extreme weather, corrosion, and aging.

## NAPA® Echlin® TPMS Service Kit Assortments

Includes the most popular service and valve kits including valve stem rebuild kits, nickel-plated valve cores, valve caps and valve core torque tool for the most popular domestic and import vehicles



92-1401SK  
Service Kit Assortment



92-1402VK  
Valve Kit Assortment

**NAPA® ECHLIN® TPMS SENSORS**

# NAPA® Echlin® Professional Training

**Award-Winning In-Person, Live  
Virtual, and Online Learning**

NAPA® Echlin® Training delivers accredited classes that educate technicians in the latest automotive repair technologies, and techs can earn CEU credits.

An extension of NAPA® Echlin® training, our extensive ADA-compliant YouTube professional video library features more than 500 installation and product videos.



**PRO  
TRAINING**  
ON-DEMAND

NAPA® Echlin® offers an annual subscription to Pro Training On-Demand. This subscription grants access to more than 200 English, and over 50 Spanish 1-hour courses – and the NAPA® Echlin® on-demand library continues to grow. Topics range from fundamentals to advanced concepts, and include HVAC, diesel, hybrid, ignition, injection, electrical and communication diagnosis.



**PRO  
TRAINING**  
ON-SITE

Whether in-person at your location or virtually via computer, all NAPA® Echlin® Training classes feature a live instructor and are fully interactive as students work through real-life scenarios. Virtual class “workbooks” include on-demand links to video content and student configurable scan data.

**Visit [NAPAEchlinTraining.com](https://NAPAEchlinTraining.com)**