

TPMS Sensors

Line Expansion

Demonstrating our continued commitment to supplying professional technicians with the TPMS coverage they demand, we've added 23 new SKUs to our TPMS line. The expansion increases coverage by an additional 27 million VIO.

NAPA® Echlin® offers a complete TPMS line that includes OE-Matching Direct-Fit TPMS Sensors, QWIK-SENSOR™ Programmable TPMS Sensors, mounting hardware, service kits, and shop tools. Here are a few of the highlights from our latest release:



92-1161



Chrysler/Dodge/Jeep/Ram (2014-09)
 Fiat (2014-12)
 Mitsubishi (2014-11)
 Volkswagen Routan (2014-11)
 VIO Over 4 Million

92-1021RC



GM (2014-07)
 VIO Over 13 Million

92-1232



Jeep Cherokee (2015-14)
 Ram 1500, 2500, 3500 (2015-14)
 VIO Over 1.3 Million

92-1198



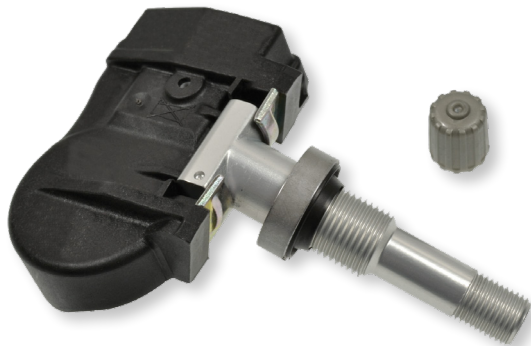
Hyundai Elantra (2013-12)
 Hyundai Elantra Coupe (2013)
 Kia Rio (2016-12)
 VIO Over 850,000

92-1197



Hyundai (2016-13)
 Kia Cadenza (2015-2014)
 VIO Over 600,000

92-1206



Infiniti JX35 (2013)
 Infiniti QX60 (2014)
 Nissan Altima, Pathfinder (2015-13)
 VIO Over 1.4 Million

92-1208



Toyota Avalon (2015)
 Toyota Camry (2015-12)
 Toyota Corolla (2015-14)
 Toyota Highlander, RAV4 (2015-14)
 Toyota Yaris (2014-13)
 VIO Over 1.2 Million

92-1241



Chevrolet Equinox, Trax (2015)
 GMC Terrain (2015)
 VIO Over 480,000

92-1237



Mercedes-Benz (2015-04)
 VIO Over 400,000

92-1256



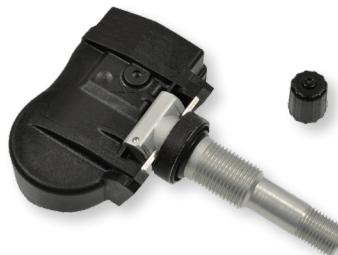
Lexus ES300h (2014-13)
 Lexus ES350, GS350 (2015-13)
 Lexus GS450h, IS250, IS350 (2015)
 Lexus LS460, LS600h (2015-14)
 VIO Over 375,000

92-1200



Hyundai Santa Fe (2012-09)
 VIO Over 300,000

92-1195



Acura MDX (2015-14)
 Acura RDX (2015-13)
 Acura RLX, TLX (2015)
 VIO Over 350,000

92-1243



Kia Soul (2015-14)
 VIO Over 285,000