

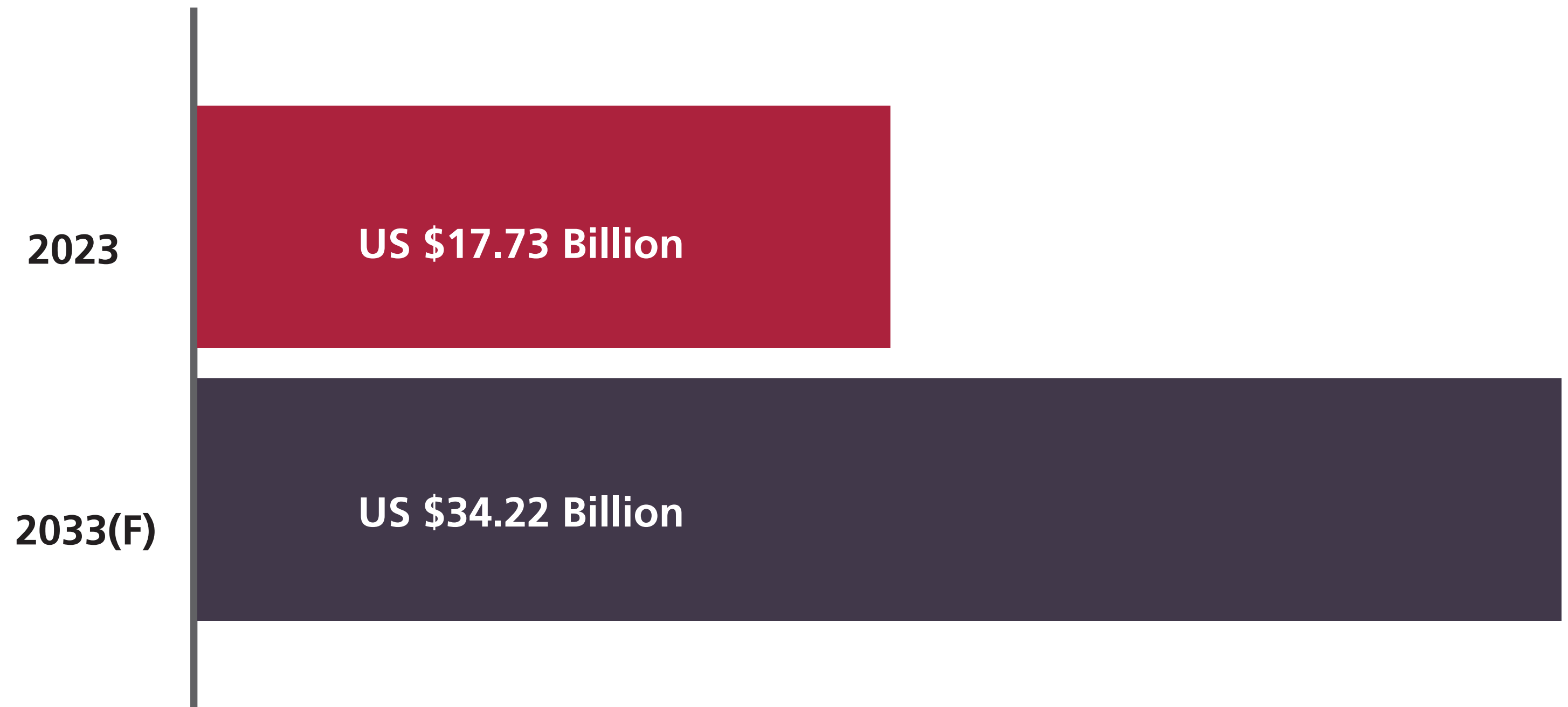


# Growing Market

The world's leading research companies agree, the demand for automotive switches will experience solid growth in the coming years.

Electronic Safety Systems, enhanced infotainment features, and alternative powertrains all add to the complexity of the electrical systems on vehicles. As the loads on electrical systems increase, the performance of switches and relays will be more critical than ever before.

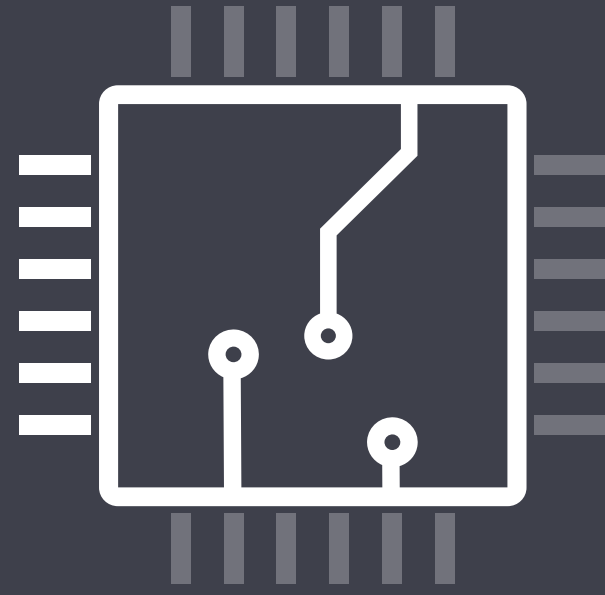
Global Automotive Switches Market, 2023 to 2033



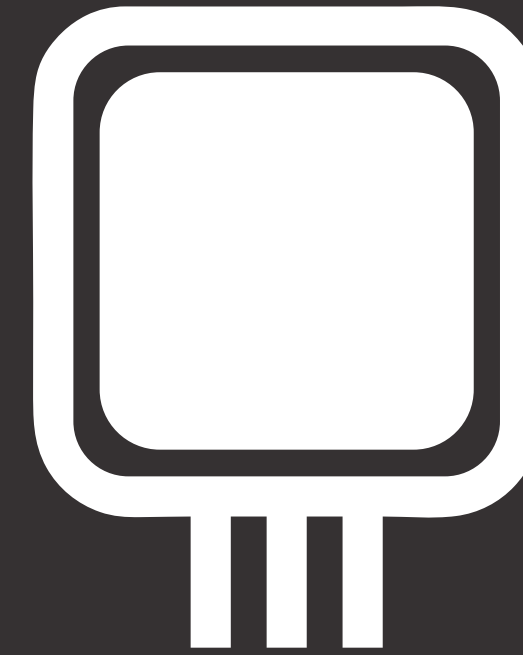
**The Global Automotive Switch market is expected to almost double from 2023 to 2033.**

- Fact.MR, 2023

# Impact on Engine Systems



Many switches such as an ignition switch or a brake switch have multiple outputs, so just because one output works, it doesn't mean that all work properly — Test each circuit individually



Anytime a load-bearing electrical device fails, it is highly recommended to also replace the corresponding relay — It is good insurance on the new part



Newer brake switches are more than a simple on/off switch, so they need to be calibrated after they are replaced — Failure to do so will affect the starting, the start/stop system, ABS system, and electronic throttle control system

# Your Complete Program

NAPA® Echlin® offers thousands of precision-engineered Switches across multiple categories. Our Switches are designed for both reliability and correct performance in all conditions.

Visit [NAPAEchlin.com](http://NAPAEchlin.com) for more details on the Switches we offer for specific vehicles.

## NAPA® Echlin® Switch Program

---

### Chassis and Drivetrain Switches

- Clutch Starter Safety Switches
- Four Wheel Drive Actuator Switches
- Four Wheel Drive Selector Switches
- Fuel Pump Cut-Off Switches
- Neutral Safety Switches
- Transfer Case Switches
- Transmission Control Switches

### Pressure and Vacuum Switches

- Oil Pressure Switches
- Power Steering Pressure Switches
- Transmission Oil Pressure Switches
- Valve Timing Oil Pressure Switches

### Body Light Switches

- Back-Up Light Switches
- Courtesy Light Switches
- Hazard Light Switches
- Headlight Dimmer Switches
- Headlight Switches
- Instrument Panel Dimmer Switches
- Stoplight Switches
- Turn Signal Switches

### Ignition Switches

- Ignition Switches with Lock Cylinder
- Ignition Push Button Switches
- Ignition Starter Switches

### Interior Switches

- Cruise Control Release Switches
- Cruise Control Switches
- Fuel Tank Selector Switches
- Liftgate Release Switches
- Clock Spring Switches
- Parking Brake Switches
- Power Door Lock Switches
- Power Seat Switches
- Power Window Switches
- Remote Mirror Switches
- Windshield Wiper Switches
- Fog Lamp Switches
- Power Sunroof Switches
- Trunk Release Switches
- Vehicle Ride Height Switches
- ...and more



# Your Complete Program

NAPA® Echlin® has more than 1,300 Relays that cover more than 200 different categories. Our complete Relay program ensures that you find the part you are looking for, with the quality and performance you expect from NAPA® Echlin®.

Visit [NAPAEchlin.com](http://NAPAEchlin.com) for more details on the Relays we offer for specific applications.

## NAPA® Echlin® Relay Program

AC Compressor Clutch Relays

Daytime Running Lamp Relays

Multi-function Relays

ABS Relays

Electronic Brake Control Relays

Overdrive Relays

AC Relays

Engine Control Relays

Power Door Lock Relays

Accessory Relays

Flashers

Power Window Relays

Adjustable Pedal Relays

Headlight Dimmer Switch Relays

Rear Window Defogger Relays

Air Bag Relays

Heated Mirror Relays

Rear Window Wiper Relays

All Wheel Drive Control Relays

Horn Relays

Secondary Air Injection Pump Relays

Automatic Headlight Relays

Ignition Control Module Relays

Trailer Towing Package Relays

Check Lamp Relays

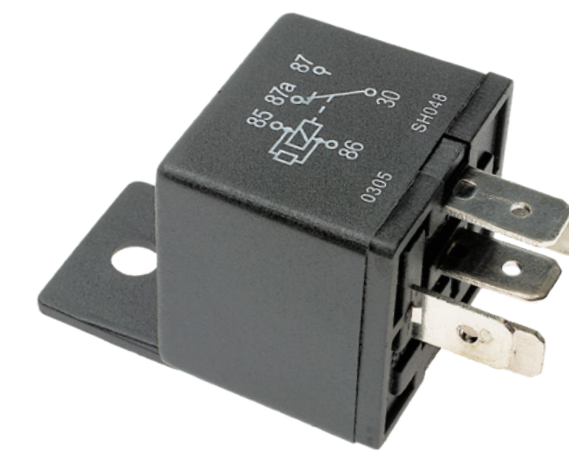
Ignition Relays

Wiper Relays

Coolant Fan Relays

Keyless Entry System Relays

...and hundreds of more applications



# What's New

## Oil Pressure Switches

NAPA® Echlin® has over 400 Oil Pressure Switches representing almost 400 million repair opportunities. Our industry-leading coverage gets better all the time with the frequent release of Switches for import and domestic vehicles.

For the most recent applications, check the online catalog at [NAPAEchlin.com](https://NAPAEchlin.com).



**OP7750**  
Ford  
Trucks  
(2023-20)  
VIO: 368K



**OP7759**  
Chrysler / Jeep  
Cars & SUVs  
(2022-17)  
VIO: 1.3M



**OP7755**  
GM  
Cars & Trucks  
(2020-19)  
VIO: 915K



ECHLIN

Oil Pressure Switches

[NAPAEchlin.com](https://NAPAEchlin.com)

# What's New

## Power Window Switches

NAPA® Echlin® has over 1,700 Power Window Switches, representing 700 million repair opportunities. New Power Window Switches, along with Cruise Control Switches, Power Seat Switches, and other interior Switches are being introduced regularly.

For the most recent applications, check the online catalog at [NAPAEchlin.com](http://NAPAEchlin.com).



**PA5159**  
Chrysler / RAM  
Cars & Trucks  
(2023-15)  
VIO: 2.2M



**PA3853**  
Toyota  
RAV4  
(2012-06)  
VIO: 885K



**PA5154**  
Jeep  
Cherokee  
(2017-14)  
VIO: 698K



**ECHLIN**

Power Window Switches

[NAPAEchlin.com](http://NAPAEchlin.com)

# What's New

## Ignition Switches

NAPA® Echlin® offers more than 450 Ignition Switches covering 200 million vehicles on the road. New Ignition Switches in every style are being added to make sure you have the late-model coverage you need.

For the most recent applications, check the online catalog at [NAPAEchlin.com](http://NAPAEchlin.com)



**KS7894**  
GM  
Cars & SUVs  
(2021-19)  
VIO: 322K



**KS7895**  
GM  
Trucks  
(2021-19)  
VIO: 1.6M



**KS7896**  
Nissan  
Cars & SUVs  
(2023-18)  
VIO: 461K

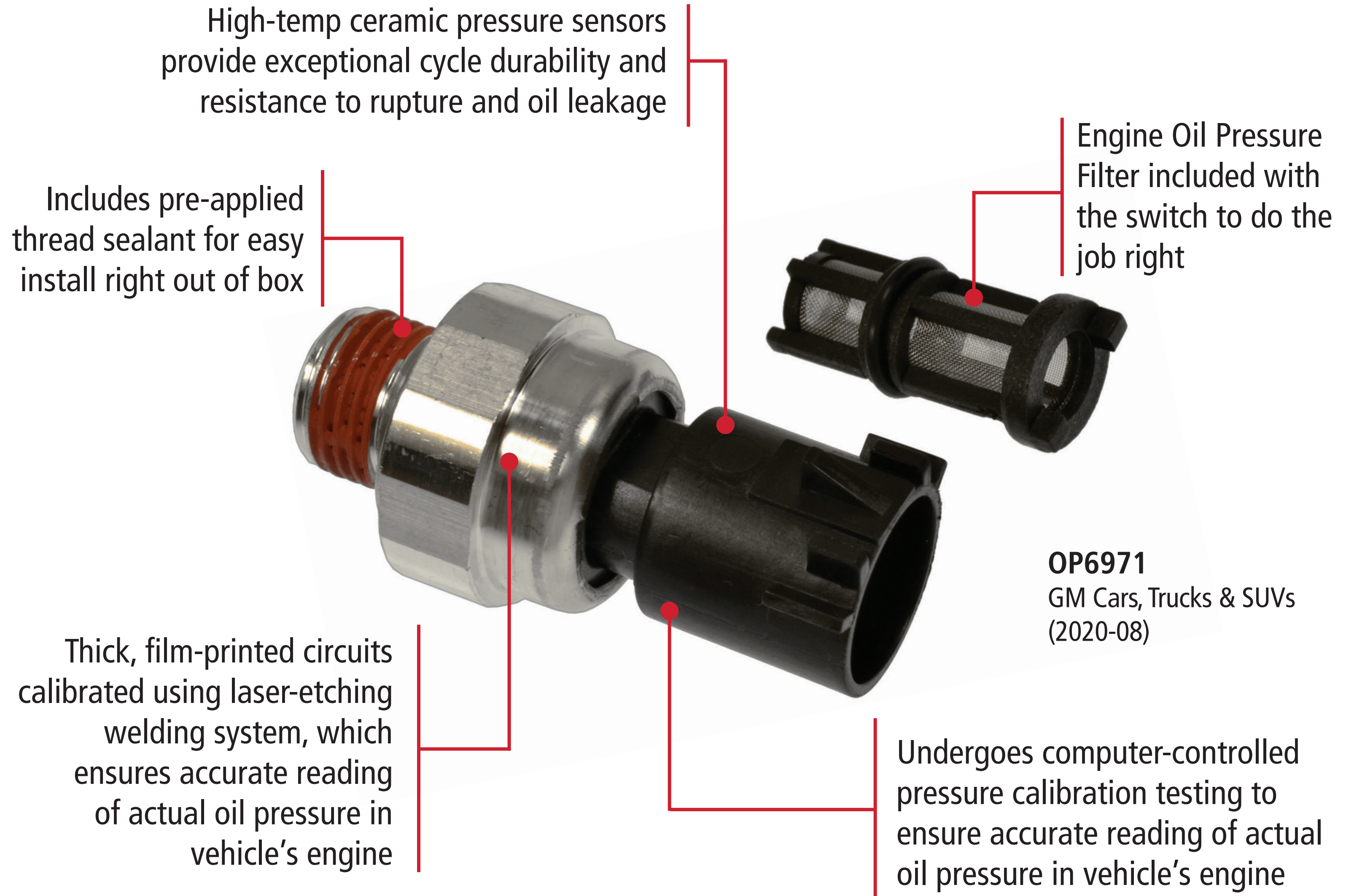




# A Closer Look

Oil Pressure Switches are critical for monitoring the status and health of engines. NAPA® Echlin® Oil Pressure Switches undergo computer-controlled calibration to ensure precise performance in all conditions.

## NAPA® Echlin® Oil Pressure Switches



# Top Movers: Oil Pressure Switches

## IMPORT APPLICATIONS



**OP6730**  
Hyundai / Kia  
Cars & SUVs  
(2021-03)



**OP6163**  
Toyota / Lexus  
Cars, Trucks & SUVs  
(2024-93)



**OP6612**  
Toyota / Nissan / Subaru & GM  
(2019-70)

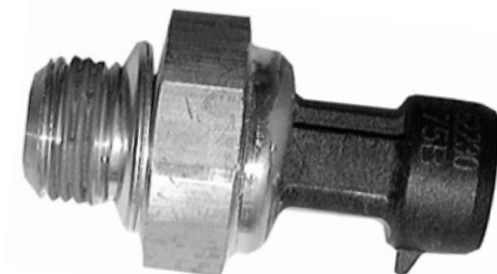


**OP6775**  
Honda / Acura  
Cars, Trucks & SUVs  
(2019-84)



**OP6962**  
Honda / Acura  
Cars & SUVs  
(2020-08)

## DOMESTIC APPLICATIONS



**OP6196**  
GM  
Cars, Trucks & SUVs  
(2009-97)



**OP6971**  
GM  
Cars, Trucks & SUVs  
(2020-09)



**OP6233**  
GM  
Cars, Trucks & SUVs  
(2017-02)



**OP6185**  
Chrysler / Dodge / Jeep / RAM  
(2017-99)



**OP6722**  
Chrysler / Dodge / Jeep / RAM  
(2013-02)



ECHLIN

Oil Pressure Switches

NAPAEchlin.com

# A Closer Look

NAPA® Echlin® Ignition Switches are a direct replacement to the original. They are designed for precise function and easy installation.

Ignition Switches are also 100% powertrain neutral, meaning they will represent service opportunities for years to come.

## NAPA® Echlin® Ignition Switch with Lock Cylinder

Copper alloy conductors ensure superior electrical conductivity with low resistive losses

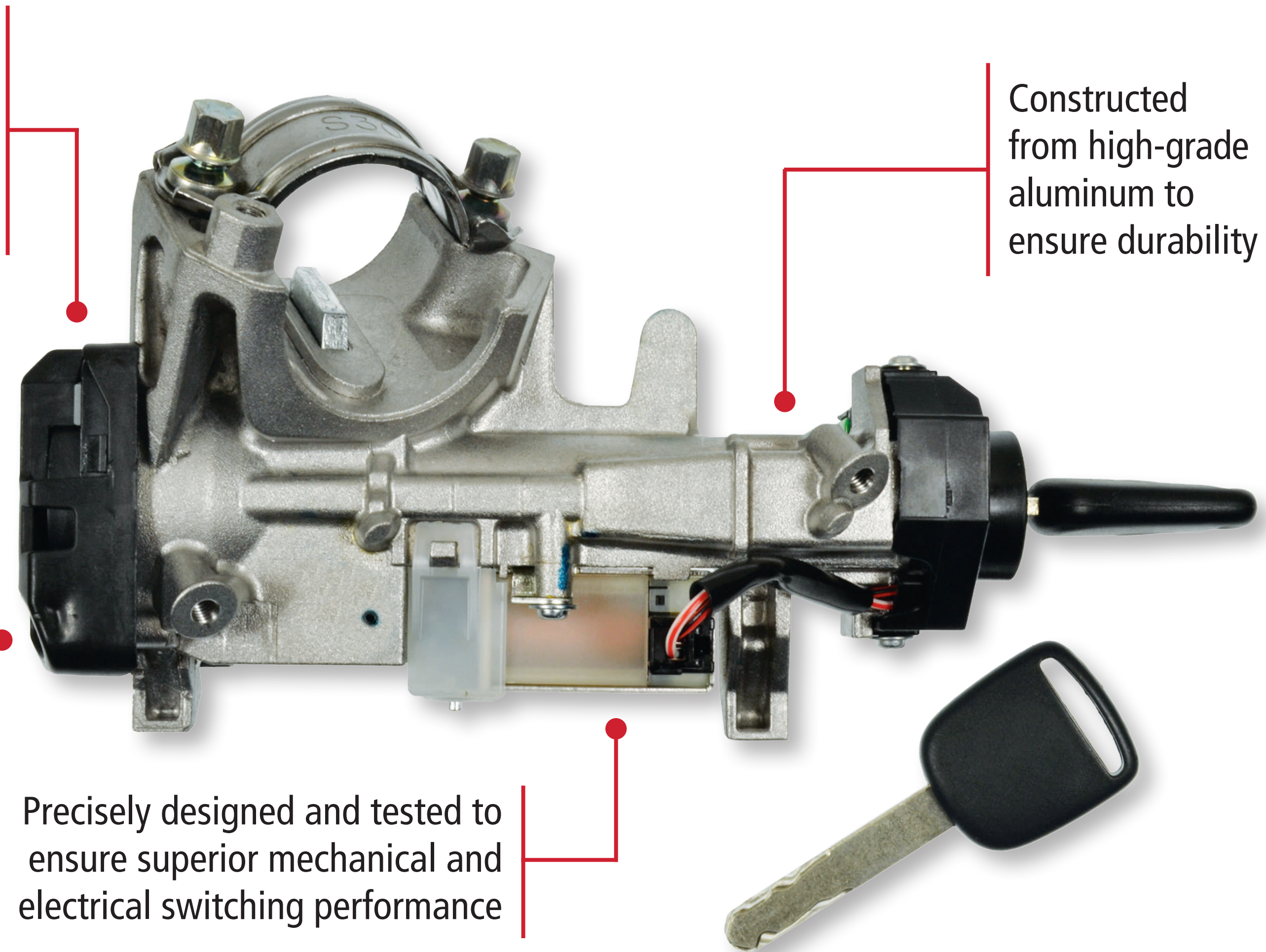
Constructed from high-grade aluminum to ensure durability

KS7515  
Honda  
(2013-08)

100% tested for proper fit, form, and function

Precisely designed and tested to ensure superior mechanical and electrical switching performance

NAPA® Echlin® also offers the newer style push button ignition switches for import and domestic vehicles



# Top Movers: Ignition Switches

**IMPORT  
APPLICATIONS**



**KS6830**  
Honda / Acura  
Cars & SUVs  
(2013-02)



**KS7370**  
Hyundai / Kia  
Cars & SUVs  
(2019-10)



**KS6405**  
Nissan  
Cars, Trucks & SUVs  
(1997-86)

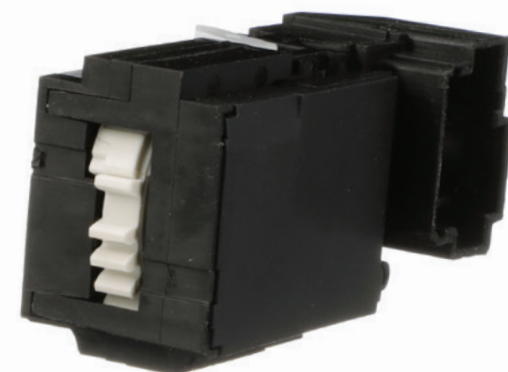


**KS7354**  
Honda / Acura  
Cars & SUVs  
(2014-08)



**KS7804**  
Volkswagen  
Beetle / Jetta  
(2019-11)

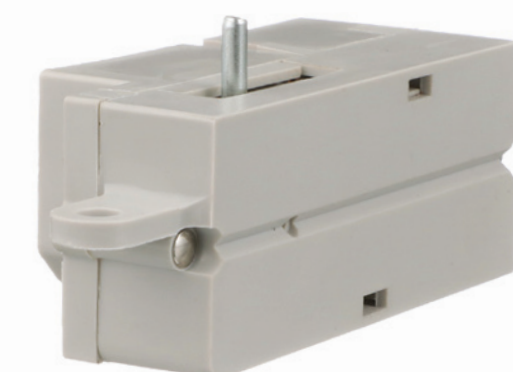
**DOMESTIC  
APPLICATIONS**



**KS6254**  
GM  
Trucks & SUVs  
(2011-01)



**KS6804**  
Ford / Lincoln  
Cars, Trucks & SUVs  
(2019-00)



**KS6667**  
Ford / Mercury  
Cars, Trucks & SUVs  
(2005-90)



**KS6745**  
GM  
SUVs  
(1995-89)



**KS6861**  
Chrysler / Dodge / Jeep  
Cars & SUVs  
(2018-01)



**ECHLIN**

Ignition Switches

[NAPAEchlin.com](http://NAPAEchlin.com)

# A Closer Look

NAPA® Echlin® offers thousands of direct-replacement interior and driver/passenger-operated switches. All NAPA® Echlin® interior switches are designed and manufactured for a precise fit and correct on-vehicle performance. Interior switches are also entirely powertrain neutral.

## NAPA® Echlin® Combination Switches

Robust design with high-grade materials meets the stringent demands of today's service professional

Direct-fit, electrically operated switch replaces damaged OE units, restoring cruise control function in the process



**DL7358**  
Nissan / Infiniti SUVs  
(2015-07)

Copper alloy conductors ensure superior electrical conductivity with low resistive losses

# Top Movers: Combination Switches

**IMPORT  
APPLICATIONS**



**DL7194**  
Toyota  
Cars & SUVs  
(2015-05)



**DL7706**  
Kia  
Soul  
(2019-13)



**DL6361**  
Toyota  
Cars, Trucks & SUVs  
(2004-98)



**DL7358**  
Nissan / Infiniti  
SUVs  
(2015-07)



**DL7170**  
Hyundai / Kia  
Cars & SUVs  
(2012-06)

**DOMESTIC  
APPLICATIONS**



**DL7540**  
Ford  
Trucks  
(2013-11)



**DL6739**  
Ford / Lincoln  
Trucks  
(2008-05)



**DL7694**  
Ford  
Trucks  
(2022-15)



**DL6740**  
GM  
Cars  
(2011-04)



**DL6557**  
GM  
Trucks & SUVs  
(2009-01)



**ECHLIN**

Combination Switches

[NAPAEchlin.com](http://NAPAEchlin.com)

# Top Movers: Power Window Switches

## IMPORT APPLICATIONS



**PA2932**  
Hyundai  
Tucson  
(2017-10)



**PA1697**  
Honda  
Civic  
(2011-06)



**PA4874**  
Kia  
Sportage  
(2017-10)



**PA4699**  
Kia  
Soul  
(2013-10)



**PA4849**  
Kia  
Optima  
(2013-11)

## DOMESTIC APPLICATIONS



**PA1426**  
GM  
Trucks & SUVs  
(2017-07)



**PA1510**  
GM  
Trucks & SUVs  
(2008-03)



**PA5050**  
Ford / Lincoln / Mercury  
Cars, Trucks & SUVs  
(2008-03)



**PA4581**  
Chrysler / Dodge / RAM  
Vans & Trucks  
(2022-12)



**PA3381**  
Chrysler / Dodge / Jeep  
Cars, Trucks & SUVs  
(2017-07)



ECHLIN

Power Window Switches

NAPAEchlin.com

# A Closer Look

NAPA® Echlin® Relays are the product of high-quality design, manufacturing and testing. With over 1,000 different Relays, NAPA® Echlin® has the Relay you want with the quality and performance your customers need.

## NAPA® Echlin® Pro Training Tip

On NAPAEchlin.com, you can search "relay" and quickly filter by amperage and terminal type.

## NAPA® Echlin® Engine Cooling Fan Module

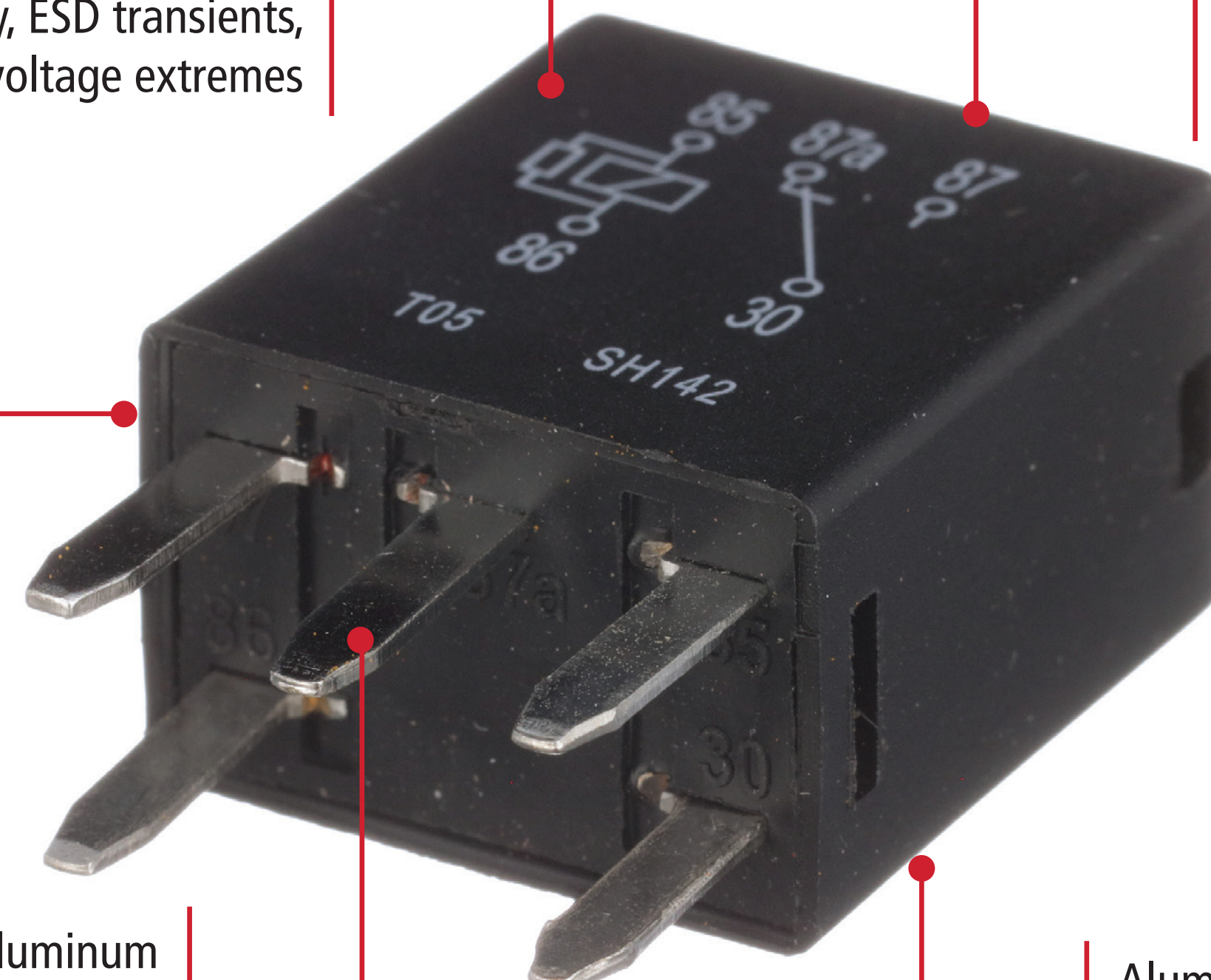
Circuitry is designed to withstand electrical over-stress conditions such as reverse polarity, ESD transients, and jump start voltage extremes

100% tested prior to shipping for continuous current load, quiescent current, voltage drop, pull-in current, voltage and hysteresis

100% tested for proper fit, form, and function

Copper terminals with aluminum inlay keep electrical resistance low and still provide benefits for wire bonding and corrosion protection

Aluminum heat sink provides excellent corrosion resistance and thermal conductivity



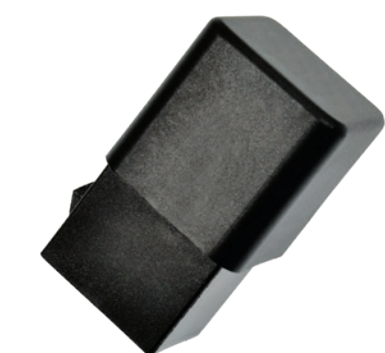
**AR533**  
Dodge / Chrysler /  
Plymouth / Jeep / RAM  
(2023-94)



Flashers



Accessory Relays



Starter Relays

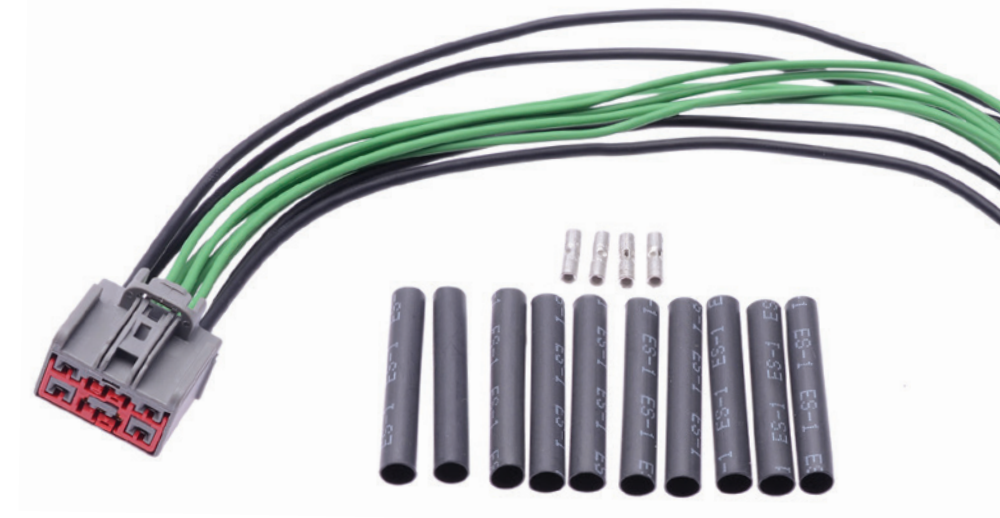


# Related Parts

In addition to over 70 different types of Switches, we also offer the high-quality Connectors you need to get your customers back on the road.

To find the Connector you are looking for, visit [NAPAEchlin.com](http://NAPAEchlin.com).

## NAPA® Echlin® Switch Connectors



Multi-function Switch Connectors

Door Jamb Switch Connectors

Door Cylinder Anti-Theft Switch Connectors

Oil Pressure Switch Connectors

Door Lock Position Switch Connectors

Coolant Fan Switch Connectors

Heated Seat Switch Connectors

Four Wheel Drive Selector Switch Connectors

Fuel Pump Cut-Off Switch Connectors

Seat Belt Switch Connectors

Fuel Door Release Switch Connectors

Coolant Fan Switch Connectors

Backup Light Switch Connectors

Clutch Pedal Switch Connectors

Shift Interlock Switch Connector

Power Take-Off Switch Connector

Torque Converter Lock-Up Switch Connector

A/C Cut-Off Switch Connector

Axle Shift Switch Connector

Fog Lamo Switch Connector

Four Wheel Drive Selector Switch Connector

Choke Heater Switch Connector

...and more

# NAPA® Echlin® Pro Training Tech Tip

As experienced ASE-certified automotive technicians themselves, NAPA® Echlin® Pro Trainers are experts in engine and sensor technology. Here's what they say to look out for during an install.



**Some switches are “normally open,” some are “normally closed” and others communicate data — Having a vehicle-specific wiring diagram can save time during any electrical diagnostic procedure**



**Many power window switches with “Auto Up” or “Auto Down” need to be relearned after replacement — It is important to look up the correct procedure, but holding the switch in the Up position for 10 seconds and then in the Down position will usually get the job done**

# NAPA® Echlin® Professional Training

Award-Winning In-Person, Live  
Virtual, and Online Learning

NAPA® Echlin® Pro Training delivers  
accredited classes that educate technicians  
in the latest automotive repair technologies,  
and techs can earn CEU credits.

An extension of NAPA® Echlin® training,  
our extensive YouTube video library has  
over 500 technical and installation videos.



## Available Classes

---

Relay Testing and Diagnosis

Labscope

Vehicle Electronic Fundamentals 1-7

Diagnosing Electronic 4WD Controls

Diagnosing Electronic Fuel Pump  
Controls



## Available Classes

---

Powertrain Electronics

Body Control Electronics Diagnosis

Labscope Power User

Domestic Anti-theft

Unleash the Power of Your Scan Tool;  
Advanced Drivability Diagnostics



For information on replacing switches, search “Switches” on the  
**NAPA® Echlin®** YouTube channel