

ELECTRONIC THROTTLE BODIES & RELATED PARTS

Highlights

1

We are an expert manufacturer with more than 200 ETBs covering 190M+ VIO

2

Every Tech Expert® by NAPA® Echlin® Electronic Throttle Body is 100% new, never remanufactured and fully calibrated & tested

3

Gaskets included for a complete repair, where required



What's in your box?™

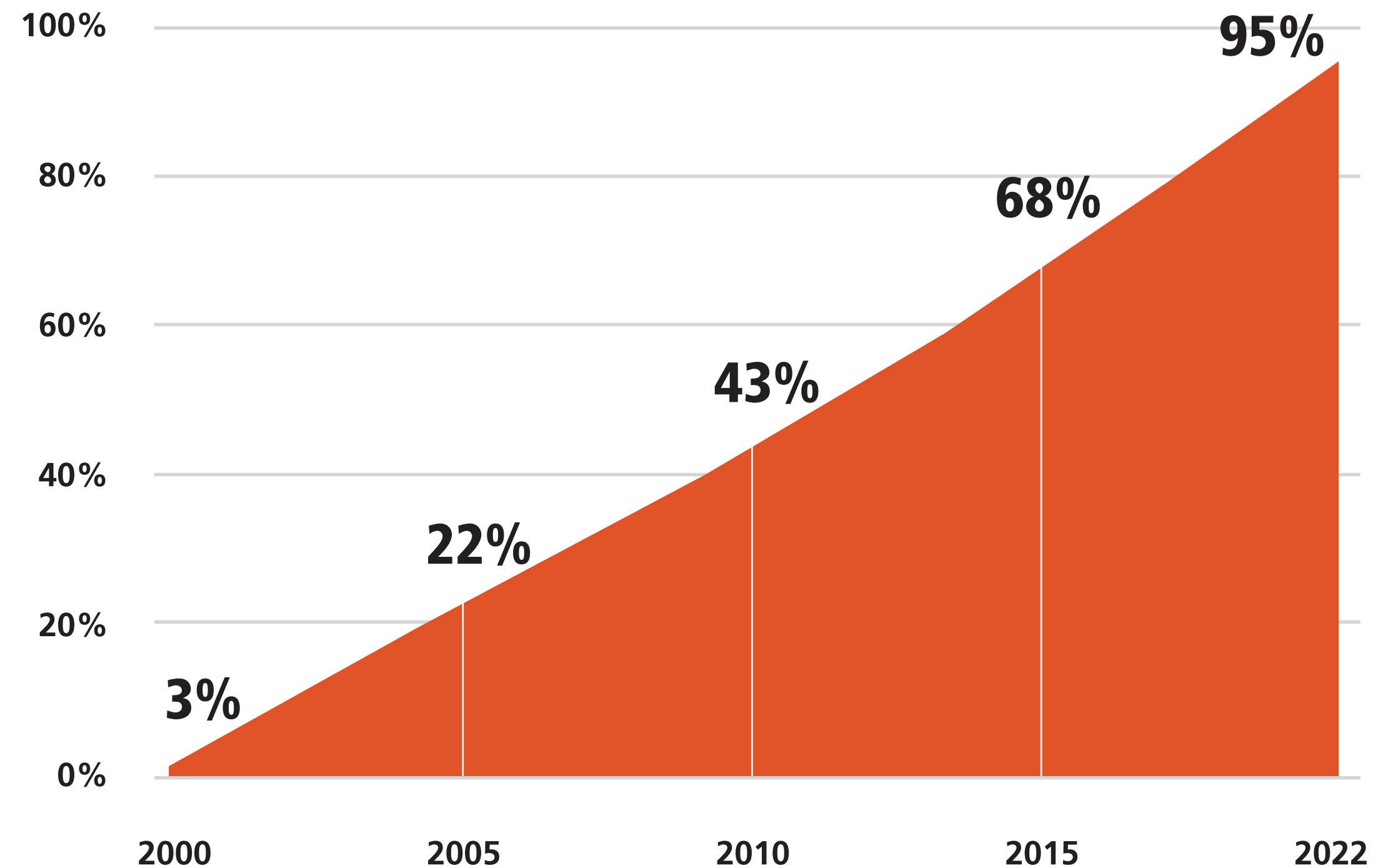


Growing Market

Vehicle manufacturers began using ETBs to improve fuel economy and reduce emissions. Today, there are more than 250 million vehicles on the road with ETBs. High OE failure rates, especially in the gear train, will make ETBs a strong category for years to come.

In the next 5 years, 68 million more vehicles with electronic throttle bodies will enter the Aftermarket "sweet spot" of 6-12 years old.

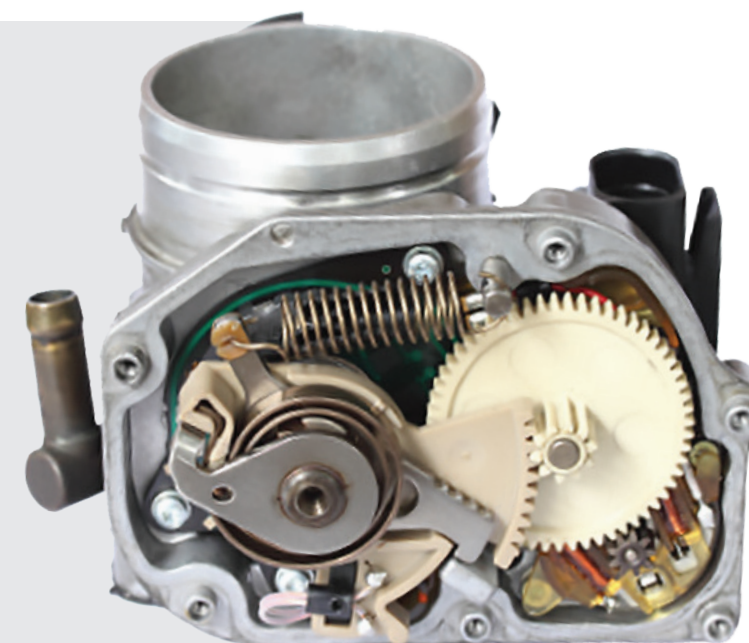
New Vehicles Equipped with Electronic Throttle Bodies



Source: SMP Internal Data

Service Opportunities:

Electronic throttle bodies use a complex gear train with no oil. Operating in extreme conditions, these gears often rotate back and forth hundreds of times per mile. This leads to high failure rates and service opportunities.



Sales Opportunities

The Jeep / Chrysler 2.0L and 2.4L often see ETBs fail before 100,000 miles. The main cause is worn or broken gear teeth inside the ETB.

Tech Expert's premium ETB replacement includes improved geometry and high-strength materials for a better-performing and longer-lasting gear train.

OE PROBLEM

Excessive wear and broken gear teeth on Jeep / Chrysler Electronic Throttle Bodies



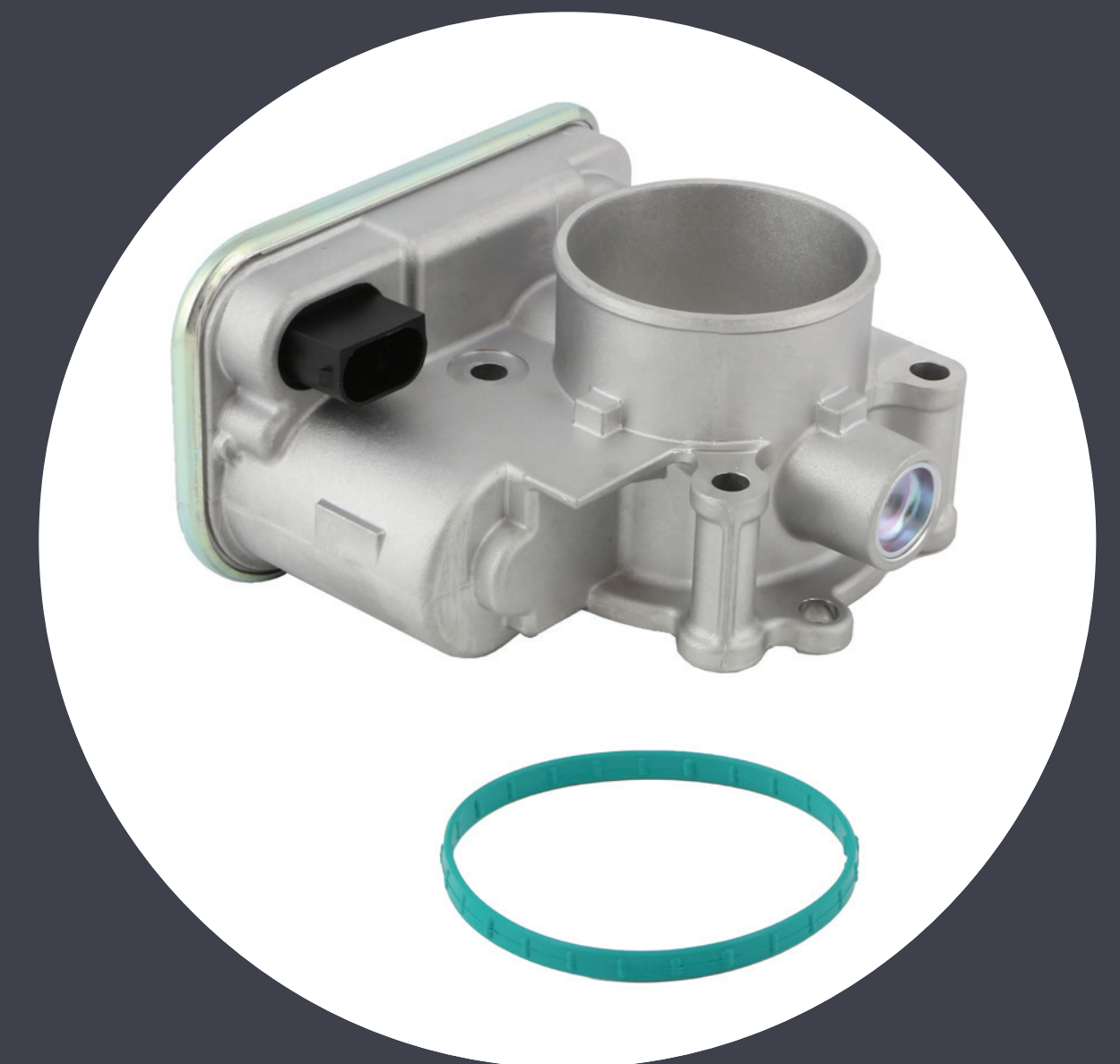
Jeep / Chrysler 2.0L & 2.4L

Chrysler 200 (2014-11)
Chrysler Sebring (2010-07)
Dodge Avenger (2014-08)
Dodge Caliber (2012-07)

Dodge Journey (2018-09)
Jeep Compass (2017-07)
Jeep Patriot (2017-07)

TECH EXPERT® SOLUTION

Tech Expert's popular ETB172 Electronic Throttle Body is designed specifically for Jeep / Chrysler applications. This premium ETB features engineering upgrades including a reinforced gear train that outperforms the original design for durability.



Source: SMP Testing Lab, 2020

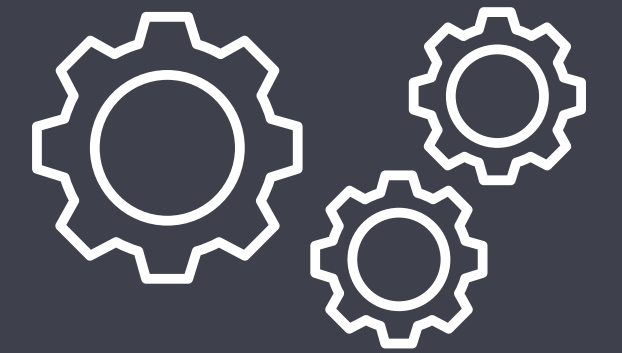
Impact on Engine Systems



A worn or malfunctioning ETB may not be able to control the blade as designed — This will lead to decreased fuel mileage and acceleration problems



A rough idle, stalling, or surging are all signs the throttle position sensor may not be functioning properly



ETBs usually fail because of wear on the gear train and bearings from age and mileage — Contamination can also cause an ETB to fail

What's New

ETBs are one of the fastest growing categories in the industry — Tech Expert® is committed to regularly introducing new Electronic Throttle Bodies.

For the most recent applications, check the online catalog at NAPAEchlin.com



ETB783
Hyundai & Kia 2.0L
(2022-15)
VIO: 267K



ETB784
Hyundai & Kia V6
(2019-12)
VIO: 638K

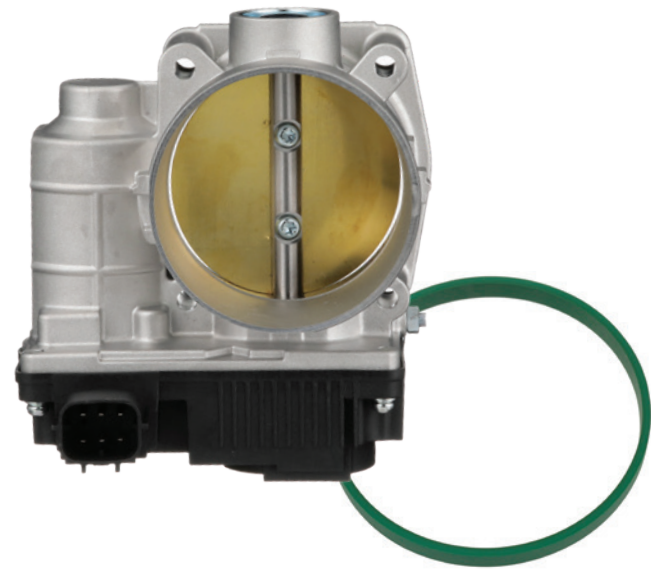


ETB788
Jeep / RAM 3.0L
(2023-14)
VIO: 225K



Top Movers: Electronic Throttle Bodies

IMPORT APPLICATIONS



ETB501

Nissan / Infiniti Cars & SUVs
(2009-02)



ETB518

Toyota Cars & SUVs
(2007-03)



ETB730

Audi / VW Cars
(2014-09)



ETB500

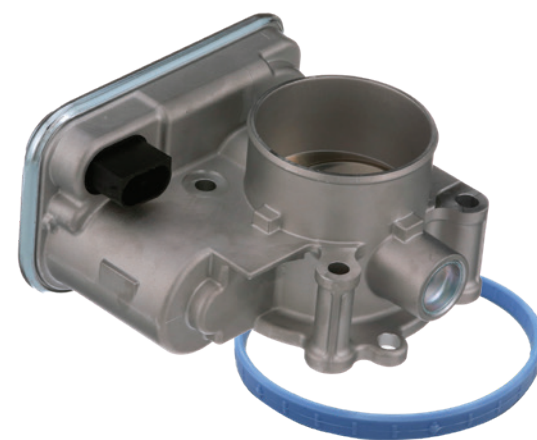
Nissan Cars & SUVs
(2013-07)



ETB753

Nissan Cars & SUVs
(2020-13)

DOMESTIC APPLICATIONS



ETB172

Chrysler / Dodge / Jeep
Cars & SUVs
(2018-07)



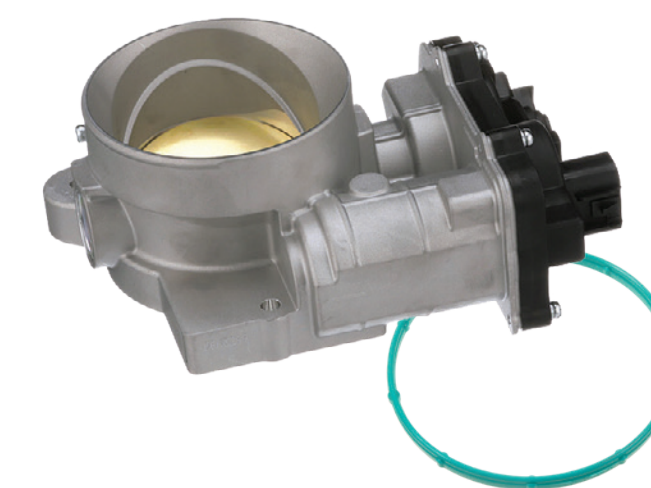
ETB144

Ford / Lincoln
Trucks & SUVs
(2020-11)



ETB145

Ford / Lincoln / Mercury
Cars & SUVs
(2022-09)



ETB106

GM Trucks & SUVs
(2009-05)



ETB146

Ford / Lincoln
Cars, Trucks & SUVs
(2020-11)

Related Parts

In addition to the highest-quality replacement Electronic Throttle Bodies, Tech Expert® offers a full line of key components necessary to repair the electronic throttle control system.

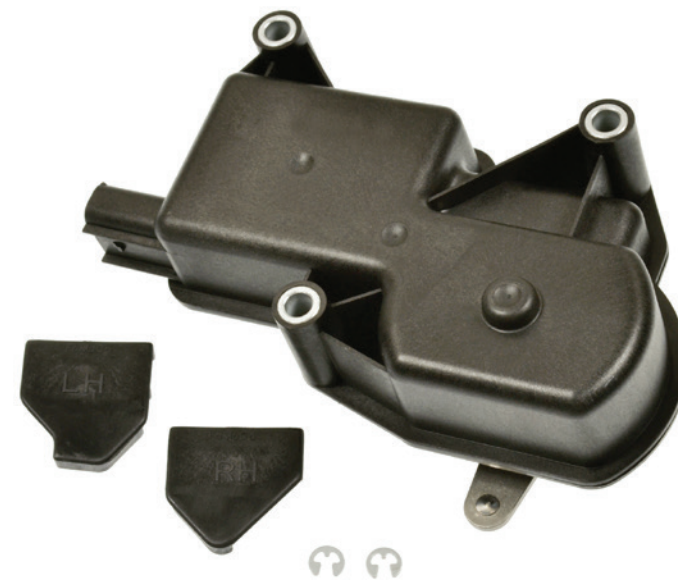


Throttle Position Sensors

Monitors the air intake to the engine and sends information to the vehicle's ECU

Tech Expert® Throttle Position Sensors maintain specific installed outputs to match the original

More than 375 TPS available with coverage through model year 2020



Variable Intake Manifold Actuators

Controls the airflow within the intake manifold

Tech Expert® Variable Intake Manifold Actuators are designed with premium components to prevent intake linkage failure and deliver long service life

Coverage through model year 2023 for import and domestic vehicles

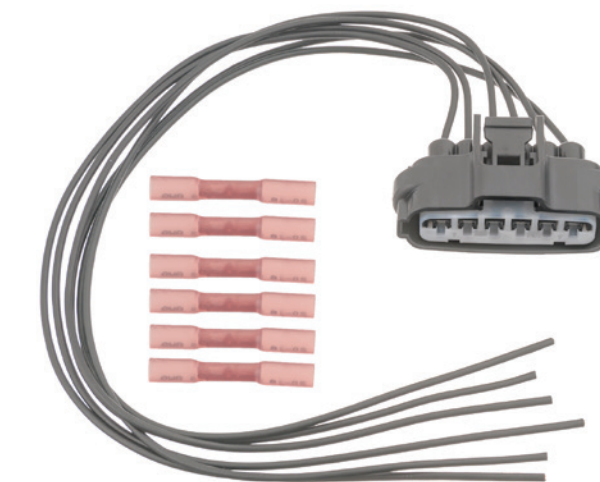


Accelerator Pedal Sensors

Indicates the position of the throttle pedal and sends information to the vehicle's ECU

Tech Expert® Accelerator Pedal Sensor assemblies are 100% tested to ensure the most accurate output versus pedal position

More than 480 APS available with coverage through model year 2023



ETB Connectors

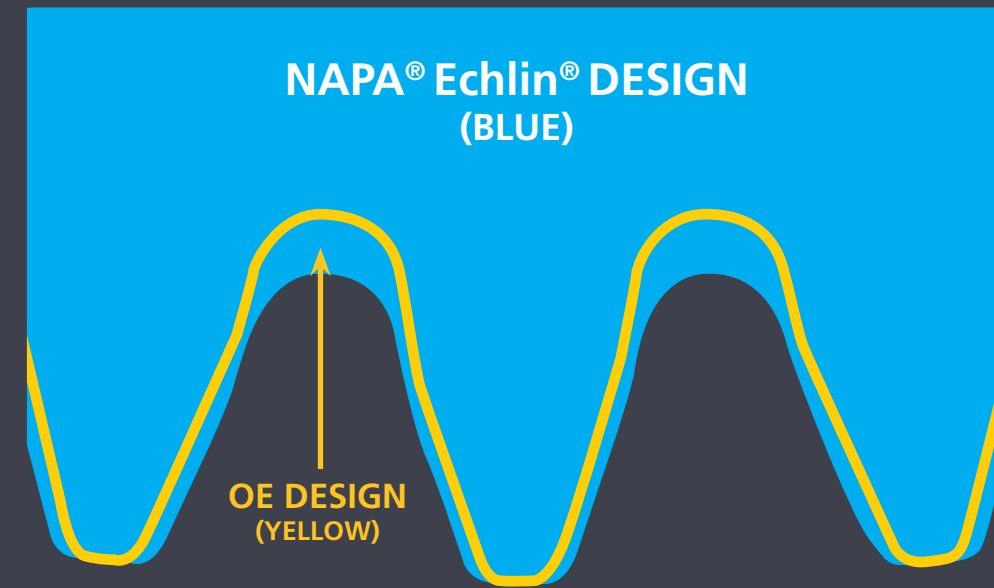
High-quality direct replacement that eliminates the need for a harness, replacing only the damaged connector for a cost-effective repair solution

All Tech Expert® Electrical Connectors are 100% tested for proper mechanical and electric fit, form and function

Coverage through model year 2023 for import and domestic vehicles

Engineering Improvements

After identifying weaknesses in the OE electronic throttle body, our engineers capitalized on their extensive gear design experience to develop a stronger, longer-lasting ETB gear. Let's look at how upgrades to Tech Expert® ETB172 helped solve the OE problem.



NAPA® Echlin® engineers improved the gear stiffness by increasing tooth thickness and decreasing overall tooth length to build a more durable gear



After studying the failed OE unit, we increased face width on the NAPA® Echlin® gear by 17% to reduce stress on the gear teeth



We manufacture gears out of premium application-specific materials to ensure performance in high-load and high-temperature conditions

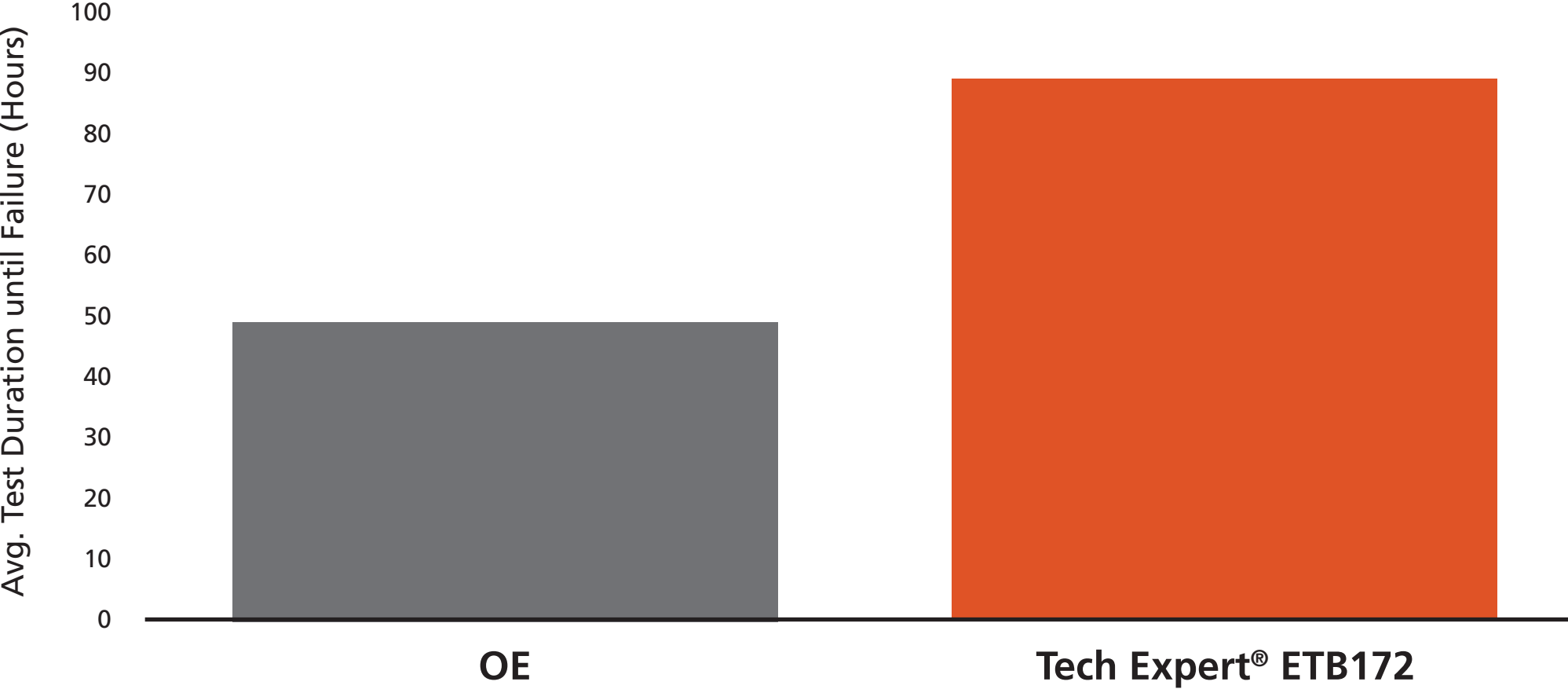
Source: SMP Testing Lab, 2020

Gear Durability Testing & Results

NAPA® Echlin® engineered design improvements for our premium ETB172 replacement ETB for the failure-prone Jeep / Chrysler applications, outperforming the original for durability and service life.

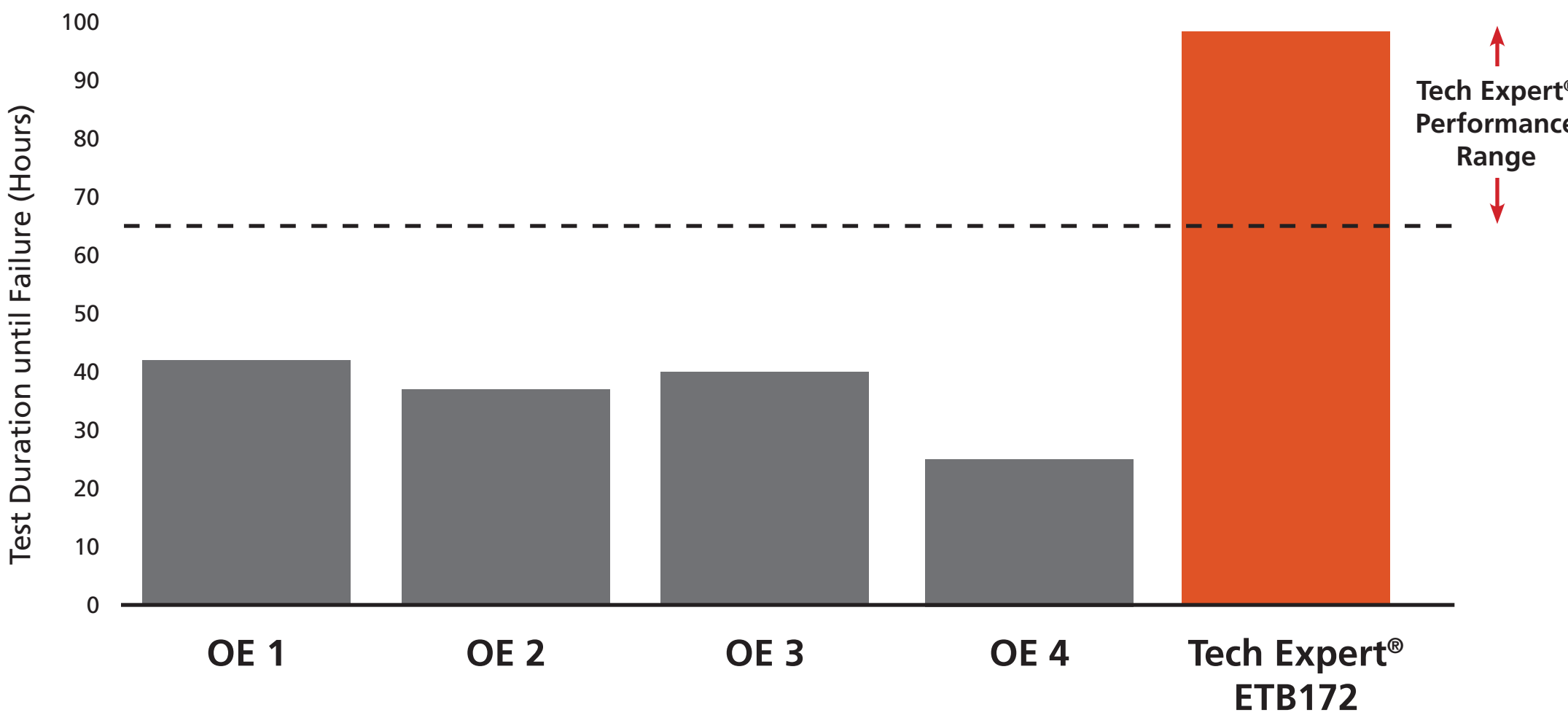
Tech Expert® outperforms the original for durability

Gear Durability Testing OE vs. Tech Expert®



Tech Expert® performed **80%** better than the OE

Gear Durability Testing OE to Tech Expert® Comparison



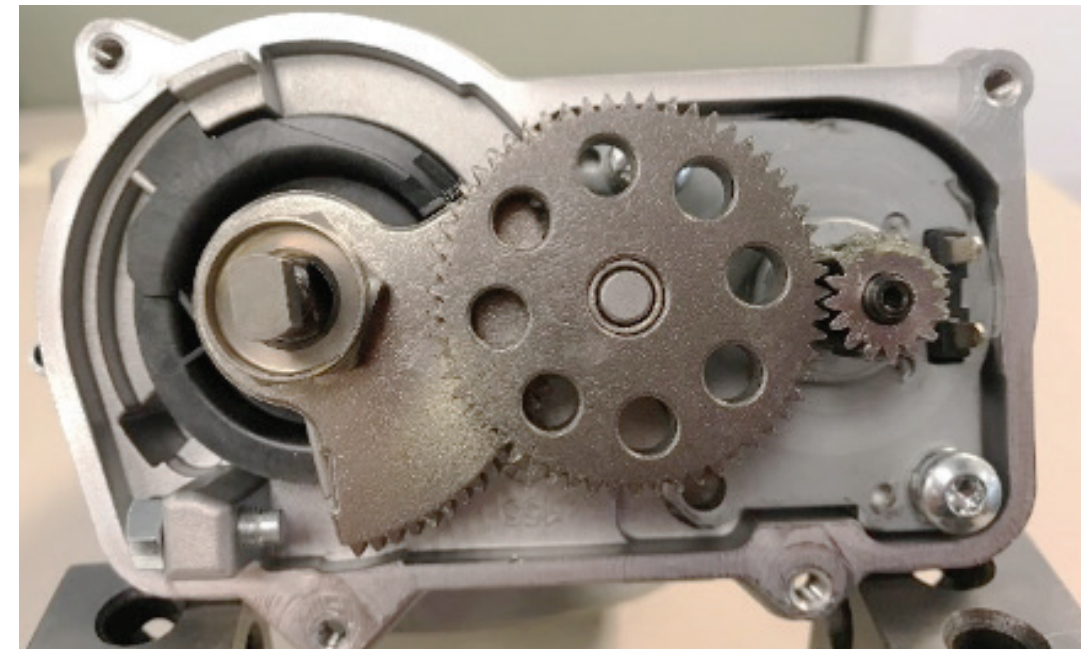
4 out of 5 OE parts failed to measure up to the Tech Expert® design

Source: SMP Testing Lab, 2020

NAPA Echlin® Engineering

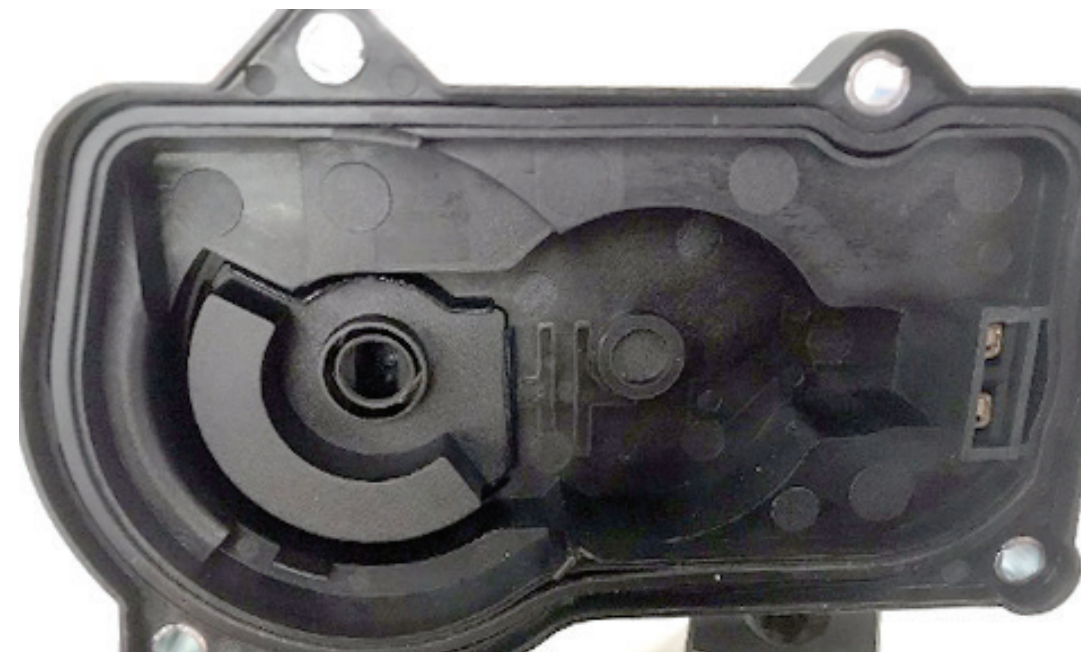
A Closer Look

Premium ETBs start with premium components and innovative design. Here's how NAPA® Echlin® goes the extra mile with our popular Tech Expert® ETB103 Electronic Throttle Body for late-model GM SUVs and trucks.



Stainless Steel Gears

Tech Expert® gearset is made of stainless steel and conforms to the highest standards of precision for a better-performing ETB



Totally Enclosed Contact Brushes

Our PCB and contact brushes are totally enclosed and separate from the gearset and other moving parts. Motor contacts are plated to minimize contact resistance and resist corrosion. Screw holes include steel compression limiters to prevent plastic cracking.



Components Designed to Last Longer

NAPA® Echlin® engineered a large 5mm screw tip to come into contact with the steel gear to resist wear over long-term use

Source: SMP Testing Lab, 2020

Testing and Validation

Our ETBs are the result of superior design and the testing proves it.

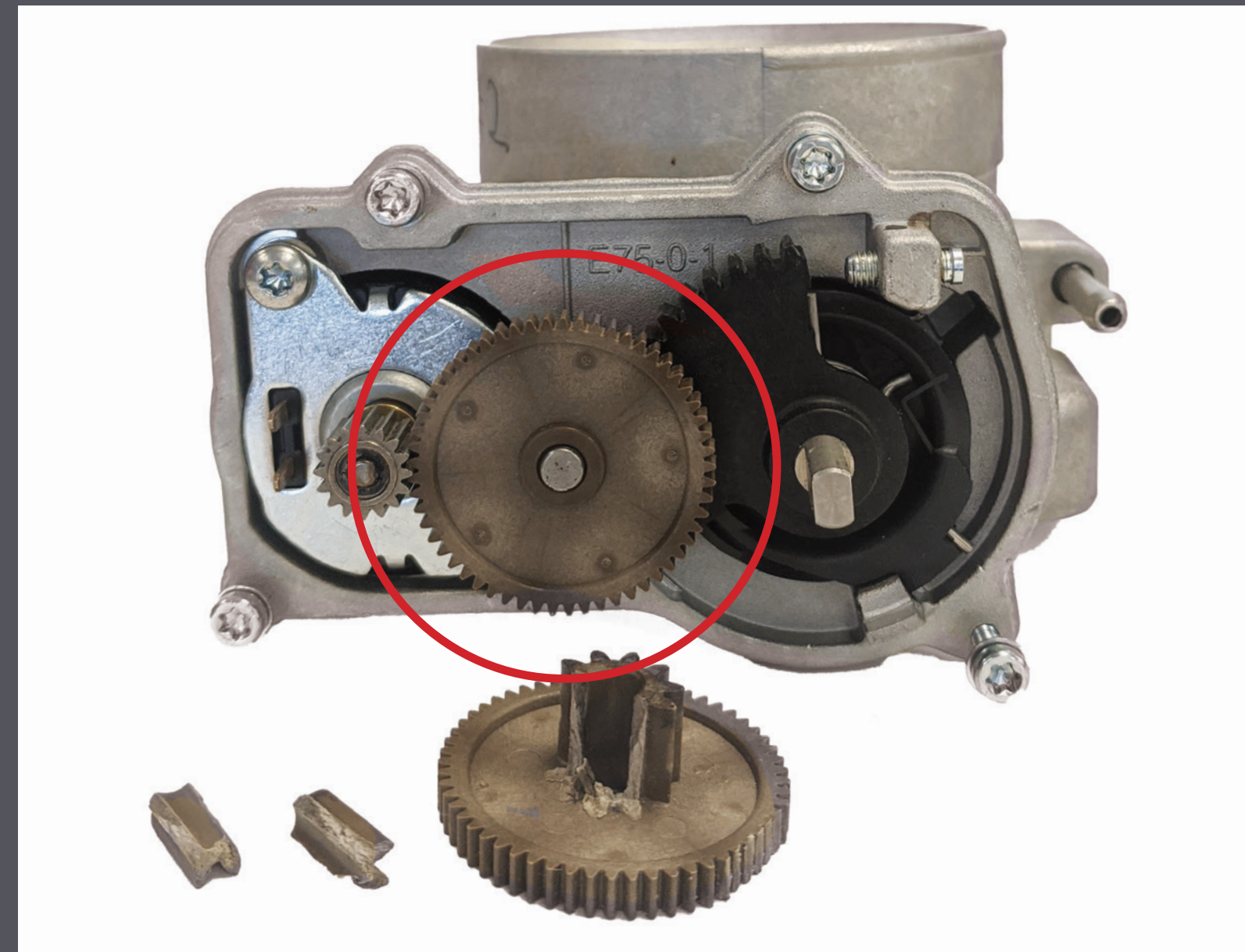
NAPA® Echlin's superior quality stands up to the most severe underhood conditions and strenuous demands of today's engines – the competition did not.

We design and validate our end-of-line testing equipment to make certain every ETB that leaves our facility performs up to our critical standards.

Visit NAPAEchlin.com for detailed test results.

COMPETITION

FAILED



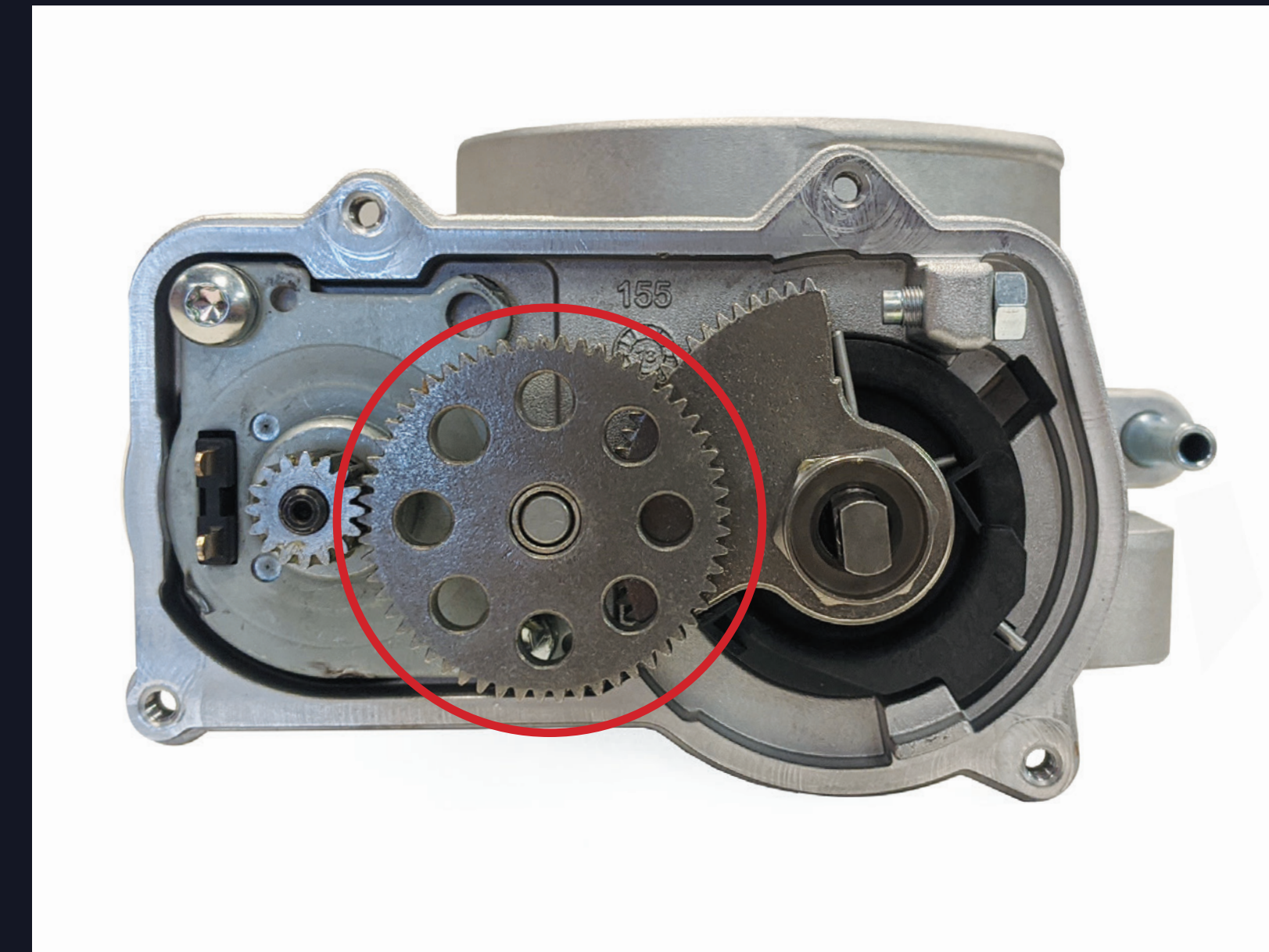
After only 10 days of testing, the competitor's ETB failed with a cracked compound gear

Inherent design flaws rendered the competitor's unit unusable

TECH EXPERT

ETB103

PASSED



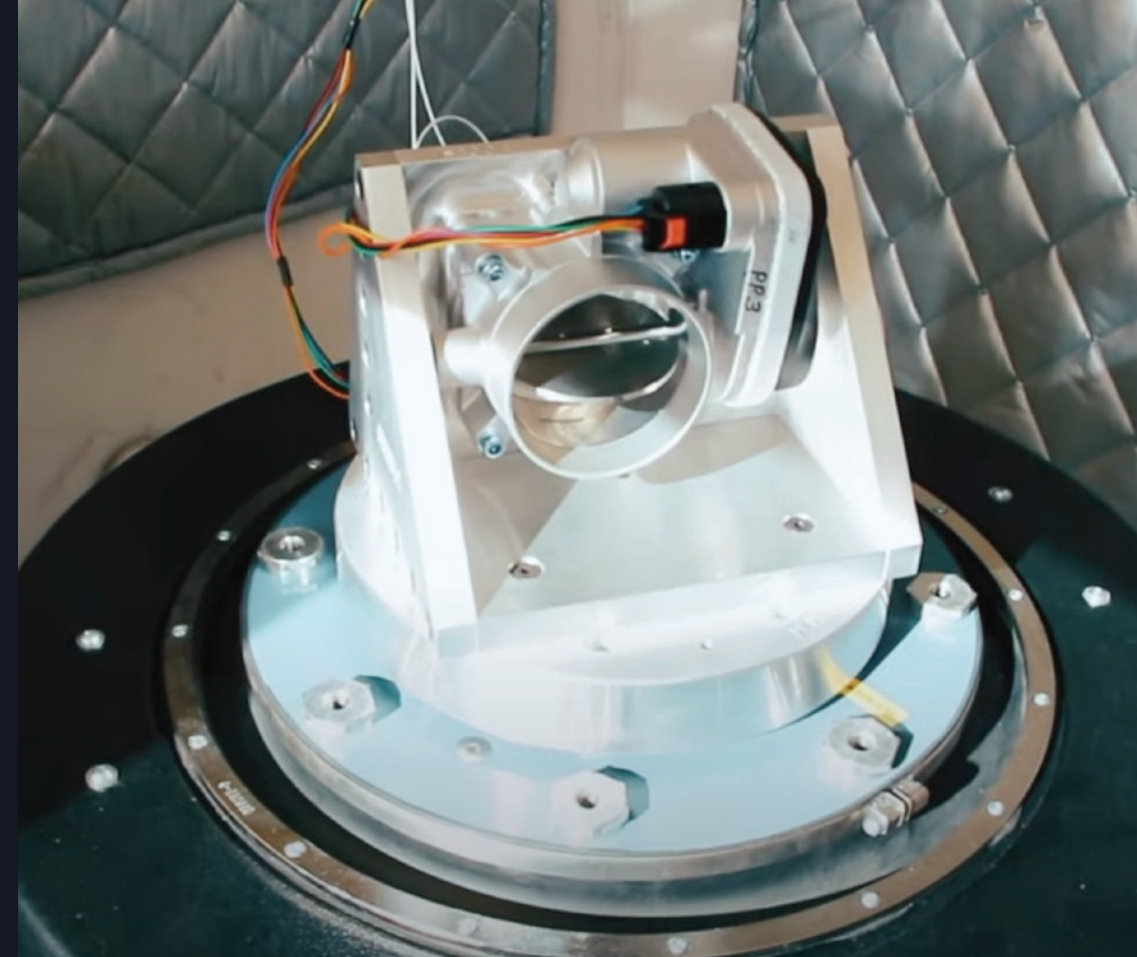
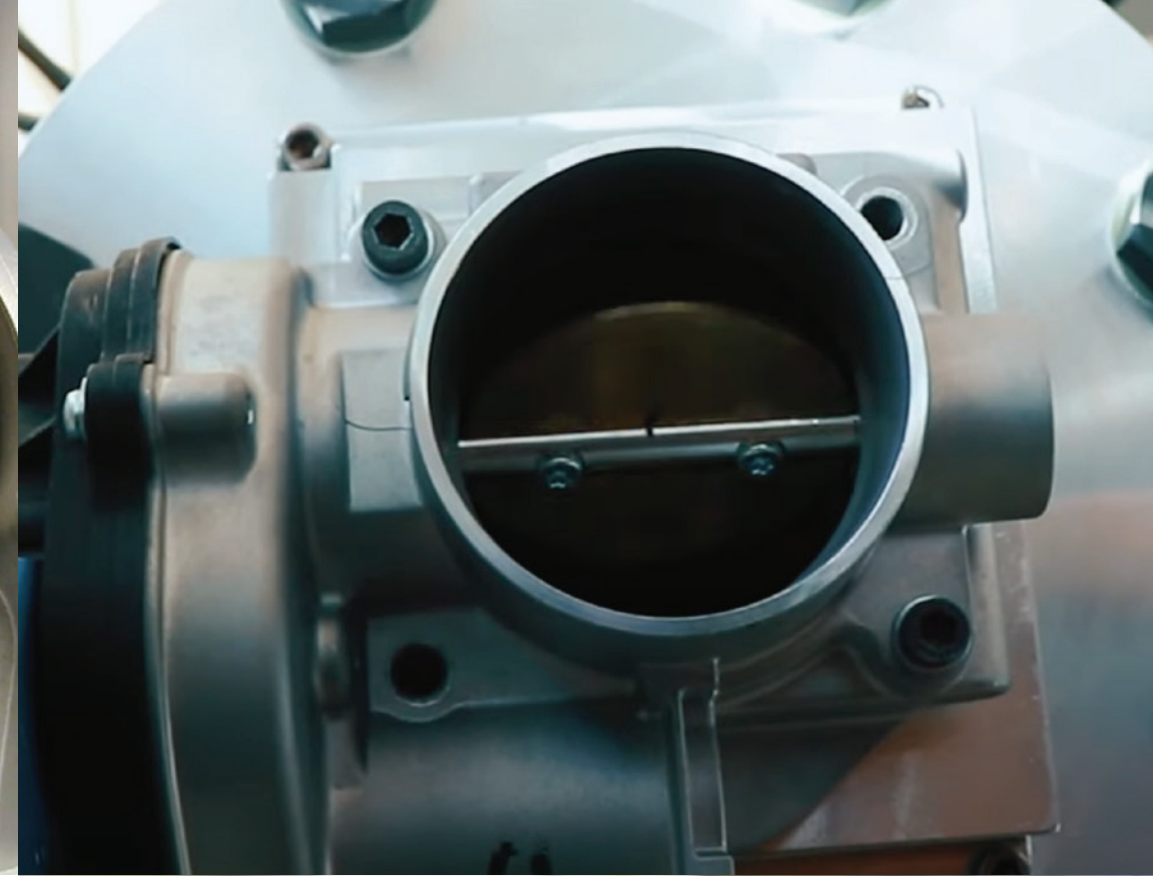
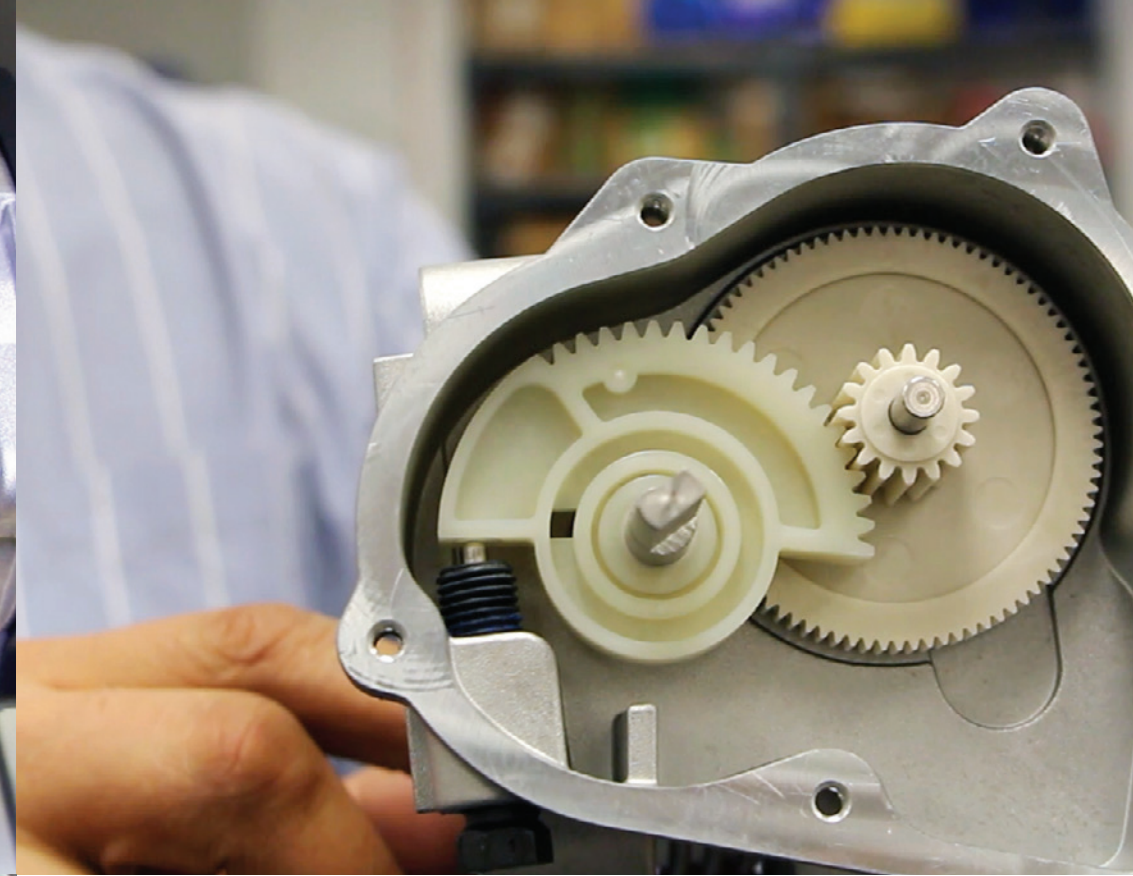
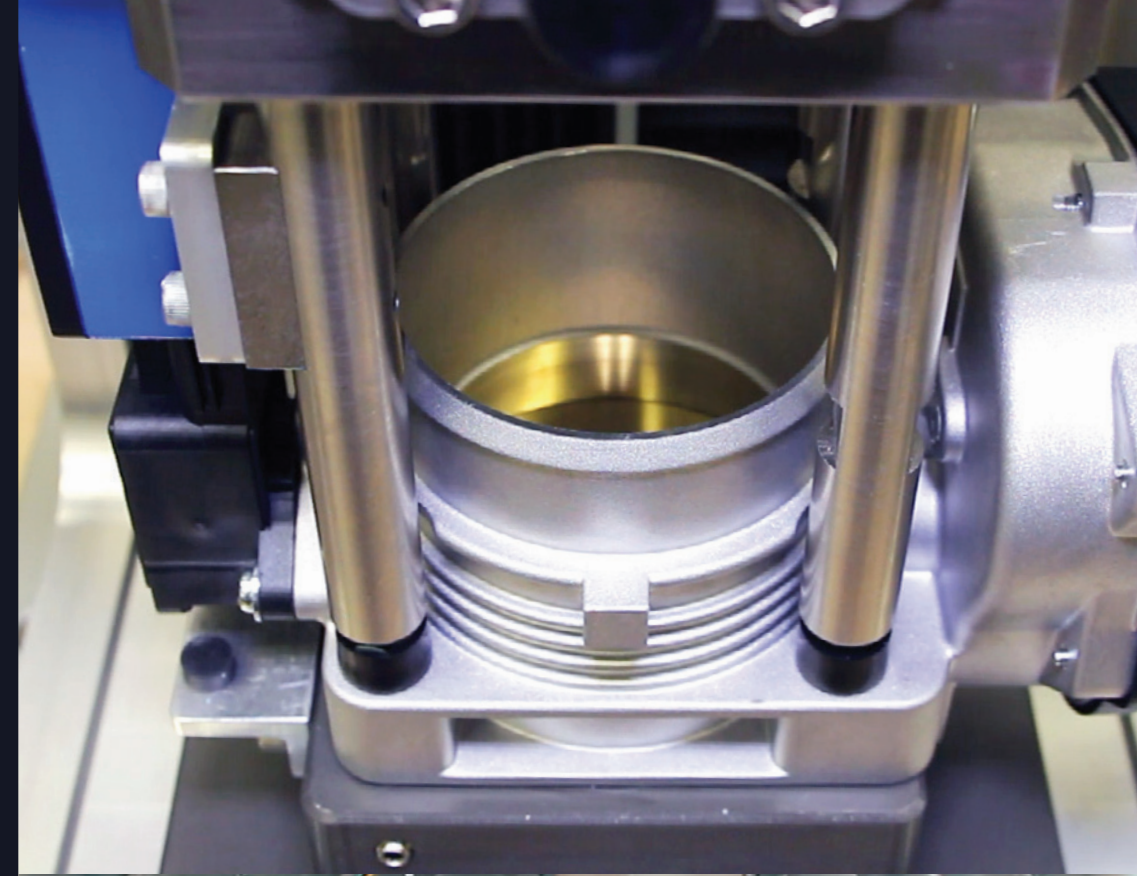
Even after 45 days of endurance testing, our ETB was intact and fully operational

Tech Expert® delivers a premium-quality ETB that performs under the toughest conditions

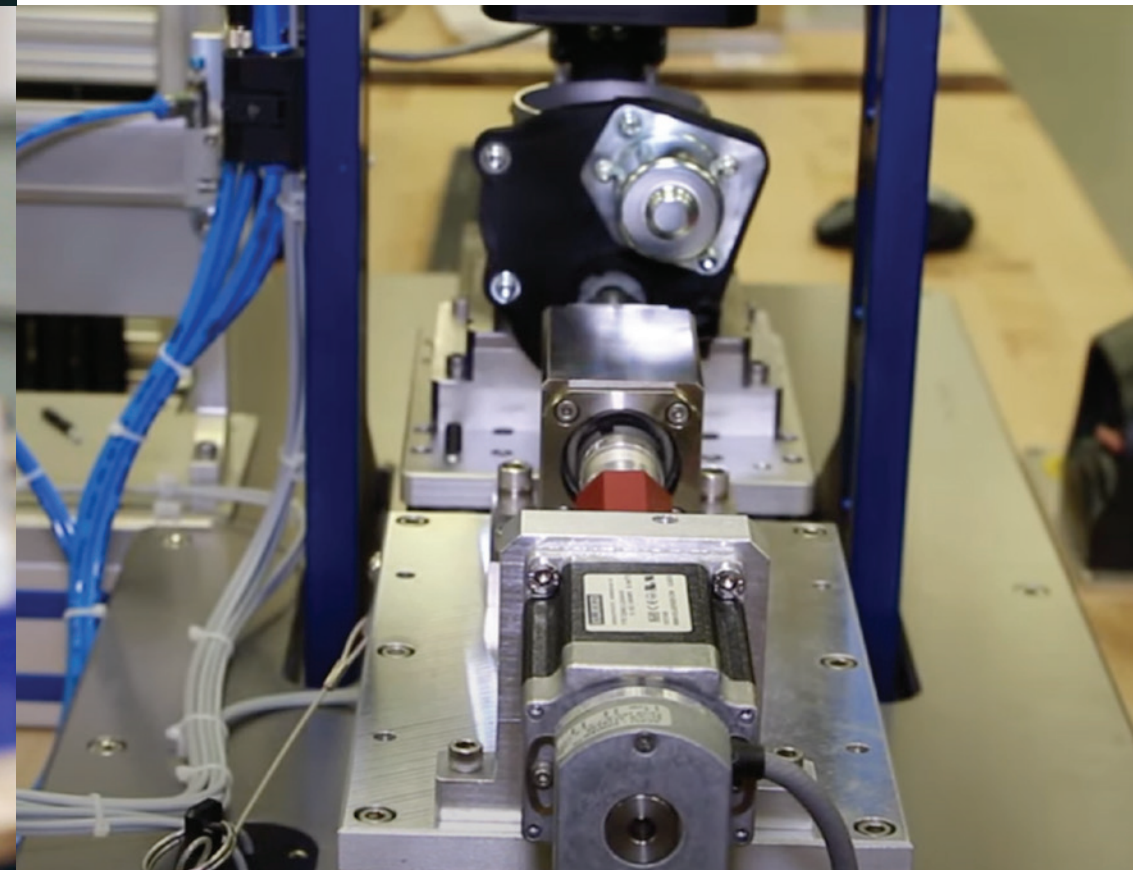
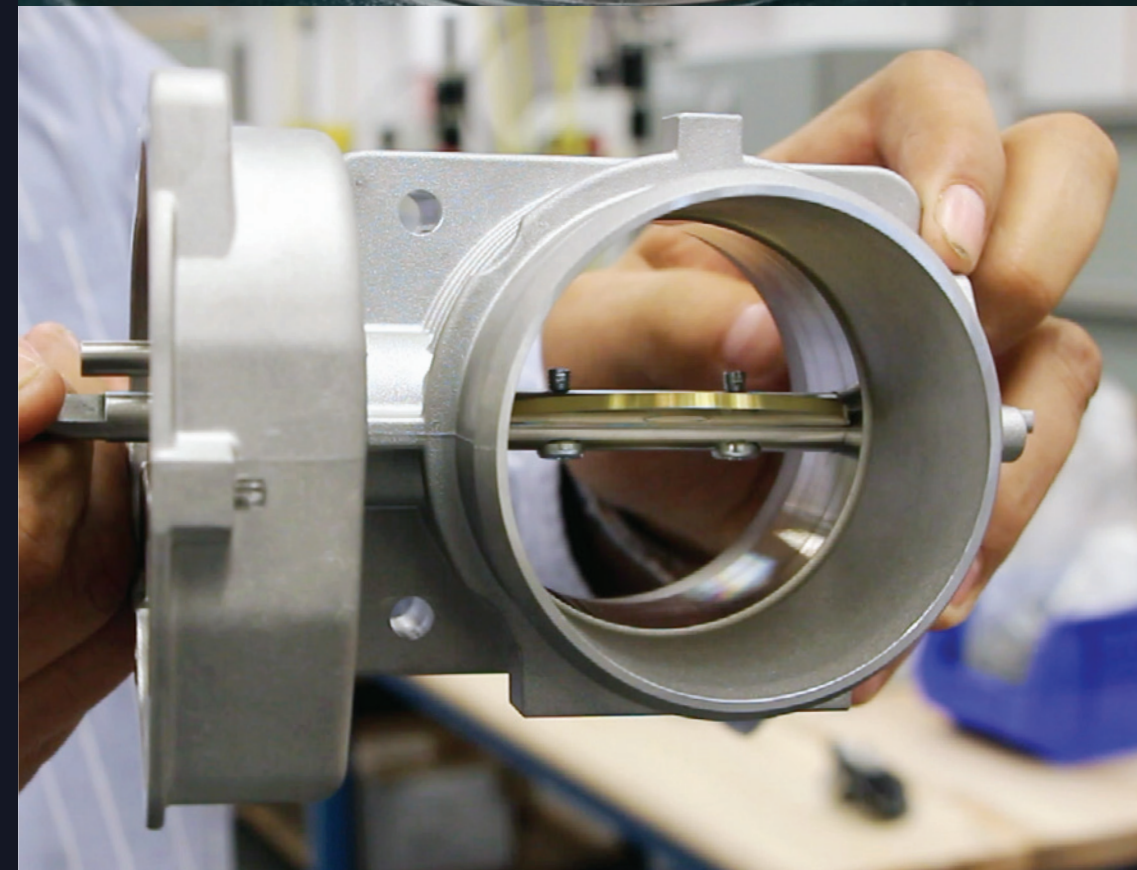
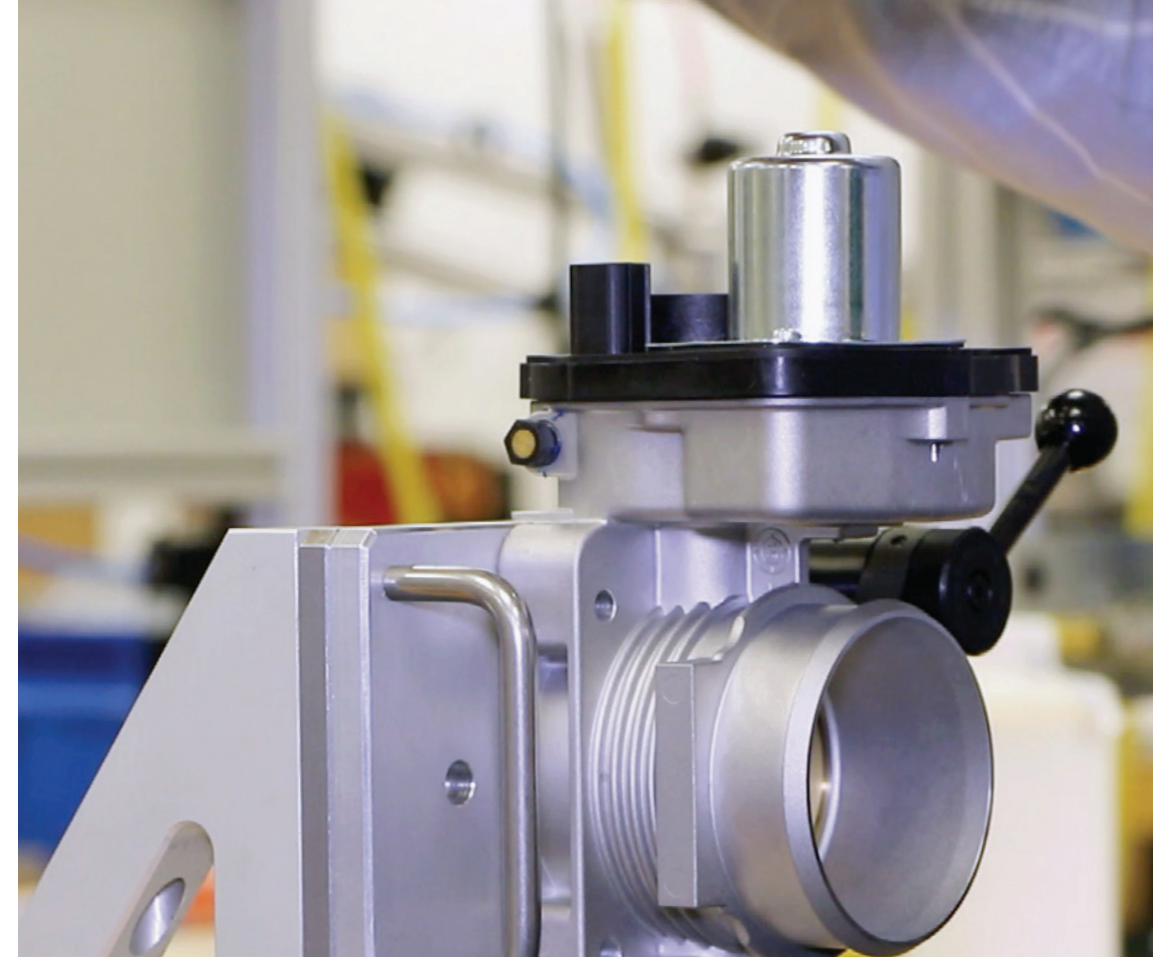
Source: SMP Testing Lab, 2020

Expert Manufacturing

As an expert Electronic Throttle Body manufacturer, we maintain complete quality control throughout the entire manufacturing process. We assemble and calibrate the components and validate output voltages to ensure they match OE for fit, form and function. Tech Expert® ETBs are application-specific and precision engineered for the units they are replacing.



100% NEW
(Not Remanufactured)
Electronic Throttle Bodies



NAPA® Echlin® Quality

To ensure quality and reliability, every Tech Expert® ETB is 100% new, never remanufactured. Because of this commitment to delivering premium new units, technicians won't encounter comebacks due to worn items in a partial rebuild.

Custom elastomeric seal protects sensor from environmental underhood elements such as dust, vapor, and liquids

As an expert manufacturer NAPA® Echlin® engineers upgrades to failure-prone OE components

New, never remanufactured, which maximizes performance and extends service life

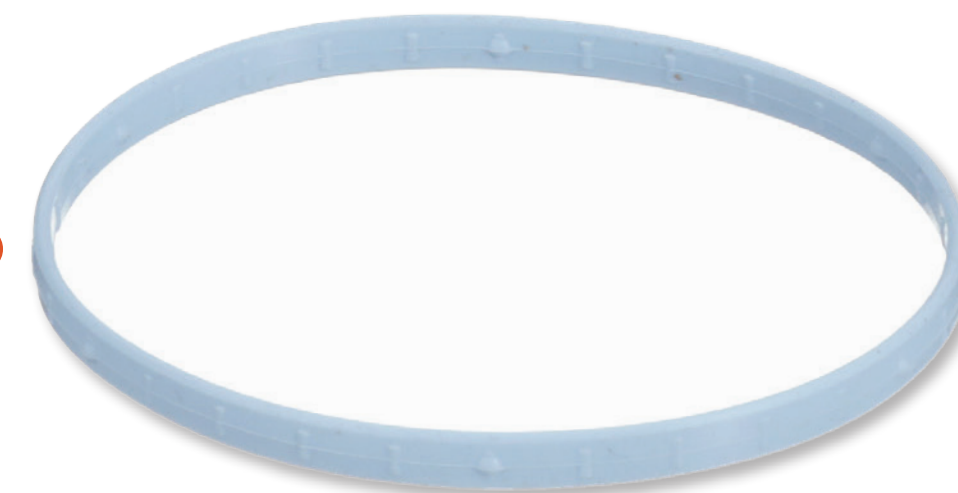
Undergoes extensive testing to ensure quality and reliability out of the box

100% calibration and testing ensure superior performance and durability

All NAPA® Echlin® manufactured ETBs are built in our North American IATF 16949-certified facility

Magnet molded in high-performance polymer to ensure consistent location and low friction with bearing surfaces

Gasket included where required



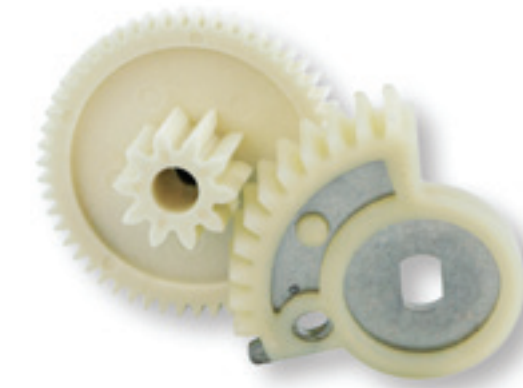
ETB180
Chrysler / Dodge / Jeep / RAM
Cars, Trucks & SUVs
(2022-11)

A Closer Look at Our Premium ETBs



Housing

Our housing is made of corrosion-resistant aluminum and CNC-machined to a surface finish of 0.4 microns. Plus, we use Computational Fluid Dynamic (CFD) software to verify the velocity, mass air flow, and pressure losses through the electronic throttle body.



Gear Train

Designed and simulated using sophisticated gear design software and precision-molded in the U.S.A., our double reduction gear train uses powder metal and plastic materials to prevent gears from becoming overstressed.



Throttle Plate Shaft

Our stainless steel throttle plate shaft is precision-machined and centerless ground to ensure proper alignment of the throttle plate in the throttle bore, and low friction when used with precision needle roller bearings.



Throttle Plate

Our brass and aluminum throttle plates are CNC-machined with tolerance less than 0.001 inches.



Bearings

We double-seal both our deep-grooved ball bearings and drawn cup needle roller bearings to control the amount of air leakage from the bearings into the intake. Plus, our bearings are designed to operate in the housing between -40°F and 284°F.



Motor

Our motors are rated for exceptional life in temperatures ranging from -40°F to 248°F. Plus, our motor's integrated ball bearing helps minimize cogging torque and our dynamometer testing ensures OE-matching performance.

NAPA® Echlin® Pro Training Tech Tip

NAPA® Echlin® Pro Trainers have installed hundreds of ETBs and trained thousands of technicians. Here's what they say to look out for during an ETB install.



Many ETB problems are caused by a loose pin fit at the electrical connector — Do your customer a favor and replace the pigtail connector when you're replacing the ETB



For some vehicles, relearning procedures are simple — Operate the engine for two minutes in park with AC off, two minutes in park with AC on, two minutes in drive with AC off, and two minutes in drive with AC on



High idle or intermittent stalling are common concerns after replacing an ETB if the proper relearn procedure isn't followed — Refer to service information to verify if and how to perform a relearn for the vehicle you're working on

NAPA® Echlin® Professional Training

**Award-Winning In-Person, Live
Virtual, and Online Learning**

NAPA® Echlin® Pro Training delivers accredited classes that educate technicians in the latest automotive repair technologies, and techs can earn CEU credits.

An extension of NAPA® Echlin® training, our extensive YouTube video library has over 500 technical and installation videos.



Available Classes

Ford Electronic Throttle Control

GM Electronic Throttle Control

Diagnosing VW Drive By Wire

Electronic Throttle Control
Fundamentals

Throttle Body Diagnostics

Electronic Throttle Control 2023



Available Classes

Torque Management and Electronic
Throttle Systems

Honda / Acura Diagnostics

Nissan / Infiniti Diagnostics

Ford Gas Engines Update

VW / Audi Diagnostics

GM Engine Controls

Toyota / Lexus Diagnostics



For information on replacing Electronic Throttle Bodies, search “Throttle” on the **NAPA® Echlin®** YouTube channel

VSPG_2023_ETB_8-23